



## ADDENDUM NO. TWO (2)

*project* Woodrow Wilson Keeble  
Memorial Health Care Center USP Compliance  
Sisseton, SD

*dsgw project #* 022003.00

*ihs project #* HHSI102201800141

*date* December 3 2024

*from* Ryan Turner DSGW Architecture

*to* All planholders for above project

The following addendum shall become part of the construction documents for the construction of the above referenced project.

This addendum supersedes and supplements all previous reference to similar items.

I hereby certify that this plan, specification, or report was prepared by me or under my direct supervision and that I am duly a Licensed Architect under the laws of the State of South Dakota.

Signature

Registration #

Date

  
14817

December 3 2024

*specifications*

SECTION	DESCRIPTION
<b>00 01 10</b>	<b>TABLE OF CONTENTS - REVISED</b> 1. OMIT this section as issued in Addendum #1 and REPLACE with REVISED Section 00 01 10 as included with this Addendum #2.
<b>08 14 16</b>	<b>FLUSH WOOD DOORS</b> 1. OMIT this section as originally issued and REPLACE with REVISED section 08 14 16 as included with this Addendum #2.
<b>08 80 00</b>	<b>GLAZING - REVISED</b> 1. OMIT this section as issued in Addendum #1 and REPLACE with REVISED Section 08 80 00 as included with this Addendum #2.
<b>10 14 00</b>	<b>SIGNAGE</b> 1. OMIT this section as originally issued and REPLACE with REVISED section 10 14 00 as included with this Addendum #2.
<b>10 44 00</b>	<b>FIRE PROTECTION SPECIALTIES</b> 1. OMIT this section in its entirety.
<b>10 56 26.13</b>	<b>MOBILE STORAGE SHELVING UNITS</b> 1. OMIT this section in its entirety.

**12 00 50 MISCELLANEOUS FURNISHINGS**

1. ADD this section as included with this Addendum #2.

*drawings*

**SECTION DESCRIPTION**

**A2.3 FLOOR PLAN – PHASE 2**

1. Reissued sheet.

*mechanical / electrical consultant* **Mechanical/Electrical Addendum #2 dated 12-06-2024**

- enclosures*
- Spec. Section 00 01 10 – Table of Contents – Revised (3 pages)
  - Spec. Section 08 14 16 – Flush Wood Doors – Revised (4 pages)
  - Spec. Section 08 80 00 – Glazing – Revised (5 pages)
  - Spec. Section 10 14 00 – Signage – Revised (2 pages)
  - Spec. Section 12 00 50 – Miscellaneous furnishings (9 pages)
  - Drawing Sheets –A2.3 (24x36) (1 pages)
  - Mechanical/Electrical Addendum #2 dated 12-06-2024 (5 pages)

---

This addendum shall become part of this bid. The bidder shall insert the addendum number in the space where indicated on the proposal form. Failure to comply may result in the bid being rejected.

**END OF ADDENDUM NO. Two (2)**

**SECTION 00 01 10**  
**TABLE OF CONTENTS - REVISED**

**WOODROW WILSON KEEBLE MEMORIAL HEALTH CARE CENTER USP COMPLIANCE**  
**SISSETON, SOUTH DAKOTA**

**DIVISION 00 -- PROCUREMENT AND CONTRACTING REQUIREMENTS**

- 00 01 01 – Project Manual Title and Registration Sheet
- 00 01 10 – Table of Contents
- 00 01 15 – Schedule of Drawings
- 00 31 00 – Available Project Information

**DIVISION 01 -- GENERAL REQUIREMENTS**

- 01 10 00 – Summary
- 01 20 00 – Price and Payment Procedures
- 01 30 00 – Administrative Requirements
- 01 40 00 – Quality Requirements
- 01 50 00 – Temporary Facilities and Controls
- 01 60 00 – Product Requirements
- 01 70 00 – Execution and Closeout Requirements
- 01 78 00 – Closeout Submittals

**DIVISION 02 – EXISTING CONDITIONS**

- 02 41 00 – Demolition

**DIVISION 03 – CONCRETE**

- 03 10 00 – Concrete Forming
- 03 20 00 – Concrete Reinforcing
- 03 30 00 – Cast in Place Concrete

**DIVISION 04 -- MASONRY**

- 04 20 00 – Unit Masonry
- 04 20 01 – Masonry Veneer
- 04 72 00 – Cast Stone Masonry

**DIVISION 05 -- METALS**

- 05 50 00 – Metal Fabrications

**DIVISION 06 -- WOOD, PLASTICS, AND COMPOSITES**

- 06 10 00 – Rough Carpentry
- 06 20 00 – Finish Carpentry
- 06 41 00 – Architectural Wood Casework

**DIVISION 07 -- THERMAL AND MOISTURE PROTECTION**

- 07 21 00 – Thermal Insulation
- 07 25 00 – Weather Barriers
- 07 53 00 – Elastomeric Membrane Roofing
- 07 84 00 – Firestopping
- 07 90 05 – Joint Sealers

**DIVISION 08 -- OPENINGS**

- 08 12 13 – Hollow Metal Frames
- 08 14 16 – Architectural Wood Doors
- 08 31 00 – Access Doors and Panels
- 08 33 13 – Coiling Counter Doors
- 08 43 13 – Aluminum Framed Storefronts

08 71 00 – Door Hardware  
08 80 00 – Glazing

**DIVISION 09 -- FINISHES**

09 21 16 – Gypsum Board Assemblies  
09 51 00 – Acoustical Ceilings  
09 65 00 – Resilient Flooring  
09 68 13 – Tile Carpeting  
09 90 00 – Painting and Coating

**DIVISION 10 -- SPECIALTIES**

10 14 00 – Signage  
10 22 13 – Wire Mesh Partitions  
10 26 01 – Wall and Corner Guards  
10 28 00 – Toilet Accessories  
~~10 44 00 – Fire Protection Specialties~~  
10 51 00 – Lockers  
10 56 13 – Metal Storage Shelving  
10 56 26 – Mobile Storage Shelving Units  
~~10 56 26.13 – Mobile Storage Shelving Units~~

**DIVISION 12 -- FURNISHINGS**

12 00 50 – Miscellaneous Furnishings

**DIVISION 21 -- FIRE SUPPRESSION**

21 00 01 – Fire Suppression Certification  
21 10 00 – Water-Based Fire Protection Systems

**DIVISION 22 -- PLUMBING**

22 00 01 – Plumbing Certifications  
22 00 10 – General Provisions  
22 05 00 – Common Work Results for Plumbing  
22 05 23 – General-Duty Valves for Plumbing Piping  
22 05 29 – Hangers and Supports for Plumbing Piping and Equipment  
22 05 53 – Identification for Plumbing Piping and Equipment  
22 07 00 – Plumbing Insulation  
22 11 16 – Domestic Water Piping  
22 11 19 – Domestic Water Piping Specialties  
22 13 16 – Sanitary Waste and Vent Piping  
22 13 19 – Sanitary Waste Piping Specialties  
22 40 00 – Plumbing Fixtures  
22 45 00 – Emergency Plumbing Fixtures

**DIVISION 23 -- HEATING, VENTILATING, AND AIR-CONDITIONING (HVAC)**

23 00 01 – Mechanical Certifications  
23 00 10 – General Provisions  
23 01 30 – HVAC Air-Distribution System Cleaning  
23 05 00 – Common Work Results for HVAC  
23 05 13 – Common Motor Requirements for HVAC Equipment  
23 05 23 – General-Duty Valves for HVAC Piping  
23 05 29 – Hangers and Supports for HVAC Piping and Equipment  
23 05 48 – Vibration Controls for HVAC Piping and Equipment  
23 05 53 – Identification for HVAC Piping and Equipment  
23 05 93 – Testing, Adjusting, and Balancing for HVAC  
23 07 00 – HVAC Insulation  
23 08 00 – Commissioning of HVAC  
23 09 93 – Sequence of Operations for HVAC Controls

- 23 21 13 – Hydronic Piping
- 23 31 13 – Metal Ducts
- 23 33 00 – Air Duct Accessories
- 23 34 23 – HVAC Power Ventilators
- 23 37 13 – Diffusers, Registers, and Grills
- 23 41 33 – High Efficiency Particulate Filtration
- 23 81 46 – Water Source Unitary Heat Pumps
- 23 82 16 – Air Coils
- 23 82 36 – Finned Tube Radiation Heaters

**DIVISION 26 – ELECTRICAL**

- 26 00 01 – Electrical Certification
- 26 00 10 – General Provisions for Electrical Work
- 26 01 00 – Construction Power and Lighting
- 26 05 00 – Common Work Results for Electrical
- 26 05 19 – Low-Voltage Electrical Power Conductors and Cables
- 26 05 26 – Grounding and Bonding for Electrical Systems
- 26 05 33 – Raceways and Boxes for Electrical Systems
- 26 05 53 – Identification for Electrical Systems
- 26 09 23 – Lighting Control Devices
- 26 24 16 – Panelboards
- 26 27 26 – Wiring Devices
- 26 28 13 – Fuses
- 26 28 16 – Enclosed Switches and Circuit Breakers
- 26 51 19 – LED Interior Lighting

**DIVISION 27 – COMMUNICATIONS**

- 27 00 01 – Communications Certification
- 27 00 10 – General Provisions
- 27 01 00 – Operation, Maintenance and Warranty
- 27 05 00 – Common Work Results for Communications
- 27 05 26 – Grounding for Communications
- 27 05 28 – Pathways for Communications
- 27 05 44 – Sleeves and Sleeve Seals for Communications Pathways and Cabling
- 27 05 53 - Identification for Communication Systems
- 27 06 00 – Schedules for Communications
- 27 08 00 – Testing of Communication Systems
- 27 10 00 – Structured Cabling Requirements
- 27 11 19 – Termination Blocks and Patch Panels
- 27 11 23 – Cable Management and Ladder Rack
- 27 11 26 – Rack Mounted Power Protection and Power Strips
- 27 15 13 – Copper Horizontal Cabling
- 27 15 43 – Faceplates and Connectors
- 27 16 19 – Patch Cords and Cross Connect Wire

**END OF SECTION**

**SECTION 08 14 16**  
**FLUSH WOOD DOORS - REVISED**

**PART 1 GENERAL**

**1.01 SECTION INCLUDES**

- A. Doors; flush and flush glazed configuration; fire rated, non-rated, standard.

**1.02 RELATED REQUIREMENTS**

- A. Section 08 12 13 - Hollow Metal Frames.
- B. Section 08 71 00 - Door Hardware.
- C. Section 08 80 00 - Glazing.

**1.03 REFERENCE STANDARDS**

- A. AWI/AWMAC/WI (AWS) - Architectural Woodwork Standards; 2014 with Errata (2018).
- B. ITS (DIR) - Directory of Listed Products; Intertek Testing Services NA, Inc.; current edition.
- C. NFPA 80 - Standard for Fire Doors and Other Opening Protectives; National Fire Protection Association; 2019.
- D. UL (BMD) - Building Materials Directory; Underwriters Laboratories Inc.; current edition.
- E. UL 10C - Standard for Positive Pressure Fire Tests of Door Assemblies; Current Edition, Including All Revisions.
- F. WDMA I.S. 1A - Interior Architectural Wood Flush Doors; Window and Door Manufacturers Association; 2013. (ANSI/WDMA I.S. 1A)

**1.04 SUBMITTALS**

- A. See Section 01 30 00 - Administrative Requirements, for submittal procedures.
- B. Product Data: Indicate door core materials and construction; veneer species, type and characteristics.
- C. Shop Drawings: Show doors and frames, elevations, sizes, types, swings, undercuts, beveling, blocking for hardware, factory machining, factory finishing, cutouts for glazing and other details.
- D. Specimen warranty.
- E. Samples: Submit two samples of door veneer, illustrating wood grain, stain color, and sheen.
- F. Warranty, executed in Owner's name.

**1.05 QUALITY ASSURANCE**

- A. Perform work in accordance with AWS Architectural Woodwork Standards, Section 9, Custom Grade.
- B. Finish doors in accordance with AWS Architectural Woodwork Standards, Section 5.

**1.06 REGULATORY REQUIREMENTS**

- A. Fire Door Construction: Conform to NFPA 252.
- B. Installed Fire Rated Door and Transom Panel Assembly: Conform to NFPA 80 for fire-rating as indicated.
- C. Smoke and Draft Control Doors: In addition to required fire rating, comply with air leakage requirements of UBC Std 7-2, Part II; with "S" label; if necessary, provide additional gasketing or edge sealing.

**1.07 DELIVERY, STORAGE, AND HANDLING**

- A. Package, deliver and store doors in accordance with specified quality standard.
- B. Accept doors on site in manufacturer's packaging. Inspect for damage.

- C. Protect doors with resilient packaging sealed with heat shrunk plastic. Do not store in damp or wet areas; or in areas where sunlight might bleach veneer. Seal top and bottom edges with tinted sealer if stored more than one week. Break seal on site to permit ventilation.

#### **1.08 PROJECT CONDITIONS**

- A. Coordinate the work with door opening construction, door frame and door hardware installation.

#### **1.09 WARRANTY**

- A. See Section 01 78 00 - Closeout Submittals for additional warranty requirements.
- B. Interior Doors: Provide manufacturer's warranty for the life of the installation.
- C. Provide warranty for the following term:
  - 1. Interior Doors: Life of installation.
- D. Include coverage for delamination of veneer, warping beyond specified installation tolerances, defective materials, and telegraphing core construction.

### **PART 2 PRODUCTS**

#### **2.01 MANUFACTURERS**

- A. Wood Veneer Faced Doors: Basis of Design – ~~VT Industries~~ **Marshfield Door Systems**.
- B. Veneer Doors, 5 Ply:
  - 1. Marshfield Door Systems, Inc.
  - 2. Construction Specialties Inc.
  - 3. VT Industries
  - 4. Substitutions: See Section 01 60 00 - Product Requirements.

#### **2.02 DOORS**

- A. Doors: See drawings for locations and additional requirements.
  - 1. Quality Level: Custom Grade, in accordance with AWI/AWMAC Architectural Woodwork Quality Standards Illustrated, Section 1300.
  - 2. Wood Veneer Faced Doors: 5-ply unless otherwise indicated.
- B. Interior Doors: 1-3/4 inches thick unless otherwise indicated; flush construction.
  - 1. Provide solid core doors at each location.
  - 2. Fire Rated Doors: Tested to 20 minutes, 60 minutes, 90 minutes, and ratings as indicated on drawings in accordance with UL 10C - Positive Pressure; Underwriters Laboratories Inc. (UL) or Intertek/Warnock Hersey (WHI) labeled without any visible seals when door is open.
  - 3. Smoke and Draft Control Doors: Tested to ratings indicated on drawings in accordance with International Building Code; UL labeled if required by applicable code; provide gasketing as specified by listing.
  - 4. Wood veneer facing for field transparent finish as indicated on drawings.

#### **2.03 DOOR AND PANEL CORES**

- A. Non-Rated Solid Core and 20 Minute Rated Doors: Type particleboard core (PC), plies and faces as indicated.
- B. Fire Rated Doors: Mineral core type, with fire resistant composite core (FD), plies and faces as indicated above; with core blocking as required to provide adequate anchorage of hardware without through-bolting.
- C. Sound Rated Doors: Equivalent to type, with particleboard core (PVC) construction as required to achieve STC rating specified; plies and faces as indicated.

#### **2.04 DOOR SCHEDULE**

- A. Veneer Facing: Grade in accordance with quality standard indicated, with book match, running match leaves assembled on door or panel face.
- B. Wood Doors: ~~VT Industries; To match existing~~ **Marshfield Door Systems: Red Oak, quarter sliced, Color: Honey.**

## **2.05 ACCESSORIES**

- A. Wood, of same species as door facing, butted corners; prepared for countersink style tamper proof screws.

## **2.06 DOOR CONSTRUCTION**

- A. Fabricate doors in accordance with door quality standard specified.
- B. Cores Constructed with stiles and rails:
- C. Fabricate fire rated doors in accordance with UL requirements. Attach fire rating label to door.
- D. Provide solid blocks at lock edge for hardware reinforcement.
  - 1. Provide solid blocking for other through bolted hardware.
- E. Vertical Exposed Edge of Stiles - Veneer Faces: Of same species as veneer facing.
- F. Factory machine doors for hardware other than surface-mounted hardware, in accordance with hardware requirements and dimensions.
- G. Factory fit doors for frame opening dimensions identified on shop drawings, with edge clearances in accordance with specified quality standard.
- H. Provide edge clearances in accordance with the quality standard specified.

## **2.07 FACTORY FINISHING - WOOD VENEER DOORS**

- A. Finish work in accordance with AWI/AWMAC/WI (AWS), Section 5 - Finishing for grade specified and as follows:
  - 1. Transparent:
    - a. System - 9, UV Curable, Acrylated Epoxy, Polyester or Urethane.
    - b. Stain: As selected by Architect.
    - c. Sheen: Flat.
- B. Seal door top edge with color sealer to match door facing.

## **PART 3 EXECUTION**

### **3.01 EXAMINATION**

- A. Verify existing conditions before starting work.
- B. Verify that opening sizes and tolerances are acceptable.
- C. Do not install doors in frame openings that are not plumb or are out-of-tolerance for size or alignment.

### **3.02 INSTALLATION**

- A. Install doors in accordance with manufacturer's instructions and specified quality standard.
  - 1. Install fire-rated doors in accordance with NFPA 80 requirements.
- B. Factory-Finished Doors: Do not field cut or trim; if fit or clearance is not correct, replace door.
- C. Trim door height by cutting bottom edges to a maximum of 3/4 inch (19 mm).
  - 1. Trim fire door height at bottom edge only, in accordance with fire rating requirements.
- D. Use machine tools to cut or drill for hardware.
- E. Coordinate installation of doors with installation of frames and hardware.
- F. Coordinate installation of glazing.

### **3.03 TOLERANCES**

- A. Conform to specified quality standard for fit and clearance tolerances.
- B. Conform to specified quality standard for telegraphing, warp, and squareness.

### **3.04 ADJUSTING**

- A. Adjust doors for smooth and balanced door movement.
- B. Adjust closers for full closure.



**3.05 SCHEDULE**

- A. See paragraph 2.04 above, coordinate with drawings.

**END OF SECTION**

**SECTION 08 80 00**  
**GLAZING - REVISED**

**PART 1 GENERAL**

**1.01 SECTION INCLUDES**

- A. Glass.
- B. Glazing compounds and accessories.
- C. Transaction Window.

**1.02 RELATED REQUIREMENTS**

- A. Section 08 12 13 - Hollow Metal Frames: Glazed borrowed lites.
- B. Section 08 14 16 - Flush Wood Doors: Glazed lites in doors.
- C. Section 08 43 13 - Aluminum-Framed Storefronts: Glazing furnished by storefront manufacturer; shall meet state Energy Compliances.

**1.03 REFERENCE STANDARDS**

- A. ASTM C864 - Standard Specification for Dense Elastomeric Compression Seal Gaskets, Setting Blocks, and Spacers; 2005 (Reapproved 2011).
- B. ASTM C920 - Standard Specification for Elastomeric Joint Sealants; 2014.
- C. ASTM C1036 - Standard Specification for Flat Glass; 2011.
- D. ASTM C1048 - Standard Specification for Heat-Strengthened and Fully Tempered Flat Glass; 2012.
- E. ASTM E773 - Standard Test Method for Accelerated Weathering of Sealed Insulating Glass Units; 2001.
- F. ASTM E774 - Standard Specification for the Classification of the Durability of Sealed Insulating Glass Units; 1997.
- G. ASTM E2190 - Standard Specification for Insulating Glass Unit Performance and Evaluation; 2010.
- H. GANA (GM) - GANA Glazing Manual; 2009.
- I. GANA (SM) - GANA Sealant Manual; 2008.

**1.04 ADMINISTRATIVE REQUIREMENTS**

- A. Pre-installation Meeting: Convene a pre-installation meeting one week before starting work of this section; require attendance by all affected installers.

**1.05 SUBMITTALS**

- A. See Section 01 30 00 - Administrative Requirements, for submittal procedures.
- B. Product Data on Glass Types: Provide structural, physical and environmental characteristics, size limitations, special handling or installation requirements.
- C. Product Data on Glazing Compounds: Provide chemical, functional, and environmental characteristics, limitations, special application requirements. Identify available colors.

**1.06 QUALITY ASSURANCE**

- A. Perform Work in accordance with GANA Glazing Manual and FGMA Sealant Manual for glazing installation methods.

**1.07 PRE-INSTALLATION MEETING**

- A. Convene one week before starting work of this section.

**1.08 WARRANTY**

- A. See Section 01 78 00 - Closeout Submittals, for additional warranty requirements.

- B. Sealed Insulating Glass Units: Provide a ten (10) year warranty to include coverage for seal failure, interpane dusting or misting, including replacement of failed units.

## **PART 2 PRODUCTS**

### **2.01 GLASS MATERIALS**

- A. Float Glass Manufacturers:
  - 1. AGC Flat Glass North America, Inc: [www.na.agc-flatglass.com](http://www.na.agc-flatglass.com).
  - 2. Guardian Industries Corporation: [www.guardian.com](http://www.guardian.com).
  - 3. Pilkington North America Inc: [www.pilkington.com/na](http://www.pilkington.com/na).
  - 4. PPG Industries, Inc: [www.ppgideascales.com](http://www.ppgideascales.com).
  - 5. Visteon Glass Systems: [www.visteon.com/floatglass](http://www.visteon.com/floatglass).
  - 6. Viracon.
  - 7. Substitutions: Refer to Section 01 60 00 - Product Requirements.
- B. Float Glass: Provide float glass based glazing unless noted otherwise.
  - 1. Annealed Type: ASTM C1036, Type I - Transparent Flat, Class 1 - Clear, Quality-Q3.
  - 2. Heat-Strengthened and Fully Tempered Types: ASTM C1048, Kind HS and Kind FT.
  - 3. Tinted Types: ASTM C1036, Class 2 - Tinted, color and performance characteristics as indicated.
  - 4. Thicknesses: As indicated; for exterior glazing comply with requirements indicated for wind load design regardless of thickness indicated.
- C. Fire Resistance-Rated Glazing: Type, thickness, and configuration as required to achieve indicated ratings.
  - 1. IBC Fire Resistance Rating: W-45, minimum.
  - 2. Provide products listed by Underwriters Laboratories or Intertek Warnock Hersey.
  - 3. Safety Certification: 16 CFR 1201 Category II.
- D. Fire-Protection-Rated Glazing: Type, thickness, and configuration as required to achieve indicated ratings.
  - 1. IBC Fire Protection Rating: As indicated on drawings.
  - 2. Provide products listed by Underwriters Laboratories or Intertek Warnock Hersey.
  - 3. Labeling: Provide permanent label on each piece giving the IBC rating and other information required by the applicable code.
- E. Clear Float Glass: Clear, annealed.
  - 1. Comply with ASTM C 1036, Type I, transparent flat, Class 1 clear, Quality Q3 (glazing select).
  - 2. Comply with ASTM C 1048, Condition A uncoated, Type I, transparent flat, Class 1, Quality q3 glazing select.
  - 3. 1/4 inch thick.
- F. Safety Glass: Clear; fully tempered with horizontal tempering.
  - 1. Comply with ASTM C 1048, Condition A uncoated, Type I, transparent flat, Class 1, Quality q3 glazing select.
  - 2. Comply with ANSI Z97.1.
  - 3. 1/4 inch thick, interior glazing.
- G. Laminated Glass: 1/2" Laminated Glazing.
  - 1. Comply with ASTM C 1048
- H. Ballistic Glazing: Total Security Solutions Defender Insulated Glass Level 3 or approved equal.

### **2.02 SEALED INSULATING GLASS UNITS**

- A. Manufacturers:
  - 1. Any of the manufacturers specified for float glass.
  - 2. Substitutions: Refer to Section 01 60 00 - Product Requirements.

- B. Sealed Insulating Glass Units: Types as indicated.
  - 1. Durability: Certified by an independent testing agency to comply with ASTM E2190.
  - 2. Edge Spacers: Aluminum, bent and soldered corners.
  - 3. Edge Seal: Glass to elastomer with supplementary silicone sealant.
  - 4. Purge interpane space with dry hermetic air.
- C. Insulated Glass Units: Double pane with glass to elastomer edge seal.
  - 1. Outer pane of 1/4 inch glass, inner pane of 1/4 inch glass
  - 2. Place reflective coating on No. 3 surface within the unit.
  - 3. Comply with ASTM E 774 and E 773, Class CBA.
  - 4. Purge interpane space with dry hermetic air.
  - 5. Total unit thickness of 1 inch.
- D. Tempered Insulated Glass Units : Double pane with glass to elastomer edge seal.
  - 1. Outer pane of 1/4 inch tempered glass, inner pane of 1/4 inch tempered glass.
  - 2. Place reflective coating on No. 3 surface within the unit.
  - 3. Comply with ASTM E 774 and E 773, Class CBA.
  - 4. Purge interpane space with dry hermetic air.
  - 5. Total unit thickness of 1 inch .
- E. Insulated Spandrel Glass Units (Type SG): Double Pane with glass to elastomer edge seal.
  - 1. Outer pane of 1/4 inch heat strengthened glass, inner pane of 1/4 inch ceramic frit fused to the outer surface, color as selected by Architect.
  - 2. Comply with ASTM C 1048, Condition B spandrel glass one surface coated Type II pattern flat, Class 2 tinted heat absorbing and light reducing, Quality q7 decorative.
  - 3. Comply with ASTM C 1036 Type I, transparent flat, Class 2 tinted heat absorbing and light reducing.
  - 4. Total unit thickness of 1 inch.
- F. Insulated Silkscreen Glass Units (Silkscreen & Tempered): Triple Pane with glass to elastomer edge seal.
  - 1. Outer panes of 1/4 inch heat strengthened glass, inner pane of 1/4 inch ceramic frit fused to the outer surface, color as selected by Architect.
  - 2. Comply with ASTM C 1048, Condition C other coated glass one surface coated Type II pattern flat, Class 2 tinted heat absorbing and light reducing, Quality q7 decorative.
  - 3. Comply with ASTM C 1036 Type I, transparent flat, Class 2 tinted heat absorbing and light reducing.
  - 4. Total unit thickness of 1 inch.

### 2.03 GLAZING COMPOUNDS

- A. Manufacturers:
  - 1. Dow Corning Corp: [www.dowcorning.com](http://www.dowcorning.com).
  - 2. GE Plastics: [www.geplastics.com](http://www.geplastics.com).
  - 3. Pecora Corporation: [www.pecora.com](http://www.pecora.com).
  - 4. Substitutions: Refer to Section 01 60 00 - Product Requirements.
- B. Butyl Sealant: Single component; ASTM C920, Grade NS, Class 12-1/2, Uses M and A, Shore A hardness of 10 to 20; black color.
- C. Silicone Sealant: Single component; neutral curing; capable of water immersion without loss of properties; non-bleeding, non-staining; ASTM C920, Type S, Grade NS, Class 25, Uses M, A, and G; with cured Shore A hardness range of 15 to 25; color as selected.

### 2.04 GLAZING ACCESSORIES

- A. Manufacturers:
  - 1. Norton Performance Plastics Corp.
  - 2. Pecora Corporation: [www.pecora.com](http://www.pecora.com).
  - 3. Tremco, Inc: [www.tremcosealants.com](http://www.tremcosealants.com).
  - 4. Substitutions: Refer to Section 01 60 00 - Product Requirements.

- B. Setting Blocks: Neoprene, 80 to 90 Shore A durometer hardness; ASTM C864 Option II. Length of 0.1 inch for each square foot of glazing or minimum 4 inch x width of glazing rabbet space minus 1/16 inch x height to suit glazing method and pane weight and area.
- C. Spacer Shims: Neoprene, 50 to 60 Shore A durometer hardness; ASTM C864 Option II. Minimum 3 inch long x one half the height of the glazing stop x thickness to suit application, self-adhesive on one face.
- D. Glazing Tape: Preformed butyl compound with integral resilient tube spacing device; 10 to 15 Shore A durometer hardness; coiled on release paper; black color.
- E. Glazing Gaskets: Resilient silicone extruded shape to suit glazing channel retaining slot; ASTM C864 Option I; .
- F. Glazing Clips: Manufacturer's standard type.
- G. Transaction Window: ~~CPL Cashier windows or approved equal.~~
  - 1. ~~Stainless steel shelf with built in deal tray and speak through.~~ **Manufacturer: QUICKSERV**
  - 2. ~~30" width x 18" depth or as shown on drawings.~~ **Model: SPEAK AROUND 36x36**
  - 3. ~~See paragraph 2.01, item H above.~~ **Added Options: Level 3 Bullet Resistant Glazing.**
  - 4. **Stainless Steel Shelf Base with Bullet Resistant Deal Tray.**
  - 5. **Intercom System SC-100L, Bullet Resistant.**
- ~~H. Ballistic Glass Boxes: CPL Bullet Protection Hand Package Receiver or approved equal.~~
  - 1. ~~Aluminum extrusion framing with level 3 ballistic clear glazing.~~
  - 2. ~~16" width x 16" or as shown on drawings.~~
  - 3. ~~CPR31/CPR32; See drawings for handed direction(s).~~
- H. **Steel Package Receiver**
  - 1. **Manufacturer: QUIKSERV**
  - 2. **Model: PR-1515 with level 3 Bullet Resistant Protection.**

## **PART 3 EXECUTION**

### **3.01 EXAMINATION**

- A. Verify that openings for glazing are correctly sized and within tolerance.
- B. Verify that surfaces of glazing channels or recesses are clean, free of obstructions that may impede moisture movement, weeps are clear, and ready to receive glazing.

### **3.02 PREPARATION**

- A. Clean contact surfaces with solvent and wipe dry.
- B. Seal porous glazing channels or recesses with substrate compatible primer or sealer.
- C. Prime surfaces scheduled to receive sealant.
- D. Install sealants in accordance with manufacturer's instructions.

### **3.03 INSTALLATION - EXTERIOR WET/DRY METHOD (PREFORMED TAPE AND SEALANT)**

- A. Cut glazing tape to length and set against permanent stops, 3/16 inch below sight line. Seal corners by butting tape and dabbing with butyl sealant.
- B. Apply heel bead of butyl sealant along intersection of permanent stop with frame ensuring full perimeter seal between glass and frame to complete the continuity of the air and vapor seal.
- C. Place setting blocks at 1/4 points with edge block no more than 6 inch from corners.
- D. Rest glazing on setting blocks and push against tape and heel bead of sealant with sufficient pressure to attain full contact at perimeter of pane or glass unit.
- E. Install removable stops, with spacer strips inserted between glazing and applied stops 1/4 inch below sight lines.
  - 1. Place glazing tape on glazing pane of unit with tape flush with sight line.

- F. Install removable stops, with spacer strips inserted between glazing and applied stops, 1/4 inch below sight line. Place glazing tape on glazing pane or unit with tape flush with sight line.
- G. Fill gap between glazing and stop with silicone type sealant to depth equal to bite of frame on glazing, but not more than 3/8 inch below sight line.
- H. Apply cap bead of silicone type sealant along void between the stop and the glazing, to uniform line, flush with sight line. Tool or wipe sealant surface smooth.

**3.04 INSTALLATION - INTERIOR WET/DRY METHOD (TAPE AND SEALANT)**

- A. Cut glazing tape to length and install against permanent stops, projecting 1/16 inch above sight line.
- B. Place setting blocks at 1/4 points with edge block no more than 6 inch from corners.
- C. Rest glazing on setting blocks and push against tape to ensure full contact at perimeter of pane or unit.
- D. Install removable stops, spacer shims inserted between glazing and applied stops at 24 inch intervals, 1/4 inch below sight line.
- E. Fill gaps between pane and applied stop with silicone type sealant to depth equal to bite on glazing, to uniform and level line.
- F. Trim protruding tape edge

**3.05 CLEANING**

- A. Remove glazing materials from finish surfaces.
- B. Remove labels after Work is complete.
- C. Clean glass and adjacent surfaces.

**END OF SECTION**

**SECTION 10 14 00**  
**SIGNAGE - REVISED**

**PART 1 GENERAL**

**1.01 SECTION INCLUDES**

- A. Signage.

**1.02 REFERENCE STANDARDS**

- A. 36 CFR 1191 - Americans with Disabilities Act Accessibility Guidelines for Buildings and Facilities; Final Rule; current edition; (ADA Standards for Accessible Design).
- B. ANSI/ICC A117.1 - American National Standard for Accessible and Usable Buildings and Facilities; International Code Council; 2009.

**1.03 SUBMITTALS**

- A. See Section 01 30 00 - Administrative Requirements, for submittal procedures.
- B. Product Data: Manufacturer's printed product literature for each type of sign, indicating sign styles, font, foreground and background colors, locations, overall dimensions of each sign.
- C. Signage Schedule: Provide information sufficient to completely define each sign for fabrication, including room number, room name, other text to be applied, sign and letter sizes, fonts, and colors.
  - 1. When room numbers to appear on signs differ from those on the drawings, include the drawing room number on schedule.
  - 2. When content of signs is indicated to be determined later, request such information from Owner through Architect at least 2 months prior to start of fabrication; upon request, submit preliminary schedule.
  - 3. Submit for approval by Owner through Architect prior to fabrication.
- D. Samples: Submit two samples of each type of sign, of size similar to that required for project, illustrating sign style, font, and method of attachment.

**1.04 QUALITY ASSURANCE**

- A. Manufacturer Qualifications: Company specializing in manufacturing the products specified in this section with minimum three years of documented experience.

**1.05 DELIVERY, STORAGE, AND HANDLING**

- A. Package signs as required to prevent damage before installation.

**PART 2 PRODUCTS**

**2.01 MANUFACTURERS**

- A. Signage: Shall match the signage from the existing facilities.
  - 1. Text schedule shall be developed by the sign supplier and coordinated with the Owner/Architect.

**2.02 SIGNAGE APPLICATIONS**

- A. Accessibility Compliance: All signs are required to comply with ADA Standards for Accessible Design and ANSI/ICC A 117.1 and applicable building codes, unless otherwise indicated; in the event of conflicting requirements, comply with the most comprehensive and specific requirements.
- B. Interior Directional and Informational Signs.

**2.03 PART 3 EXECUTION**

- A. Examination:
  - 1. Verify that substrate surfaces are ready to receive work.

B. Installation:

1. Install in accordance with manufacturer's instructions.
2. Install neatly, with horizontal edges level.
3. ~~Locate signs where indicated:~~ **Sign Locations:**
  - a. ~~If no location is indicated obtain Owner's instructions.~~ **All rooms listed in Room Finish Schedule.**
4. Protect from damage until Substantial Completion; repair or replace damage items.

**PEND OF SECTION**



**SECTION 12 00 50**  
**MISCELLANEOUS FURNISHINGS**

**PART 1 GENERAL**

**1.01 SUMMARY**

- A. Section includes MISCELLANEOUS FURNISHINGS including:
  - 1. Modular Laboratory Furniture System
- B. Related Documents: Drawings and general provisions of the Contract, including bidding and contract documents and Division 1 specification sections, apply to this section.
- C. Products shall be new and in current production. Products shall not be made obsolete within 2 years after purchase.

**1.02 DEFINITIONS**

- A. ADA: Americans with Disabilities Act.

**1.03 SUBMITTALS**

- A. Submit in accordance with Division I requirements.
- B. Product Data:
  - 1. Provide two copies of manufacturer's data (cut) sheets for each product line.
  - 2. Provide the manufacturer's specifications and information necessary to show compliance with the specifications.
  - 3. Provide instructions for installation and maintenance.
  - 4. Provide finishes available for selection by Architect/Owner.
- C. Schedule of furnishings and shop drawings: Provide schedule showing quantity and location of furnishings. Provide shop drawings as required for specific items noted in this Section.
- D. Test Reports: Where products, materials, and procedures are specified by reference to specific tests or standards, submit two copies of certificates from an independent testing laboratory showing satisfactory completion of specified tests and conformance to standards.
- E. **Provide field verification measurements of the site, including verification locations of power and data locations.**

**1.04 QUALITY ASSURANCE**

- A. Refer to Division 1 requirements.
- B. Regulatory Requirements:
  - 1. All products shall be standard manufacturer's products unless otherwise specified.
  - 2. Comply with laws, codes, and ordinances of Federal, State, Local and other agencies having jurisdiction.

**1.05 QUALIFICATIONS**

- A. Manufacturers: The furniture manufacturer shall specialize in the manufacture of the specified products for a minimum of five years.
- B. The installing Contractor shall be a company specializing in the products specified and its delivery and installation, and shall have substantial experience with the manufacturer's products for a minimum of five years.

**1.06 DELIVERY, STORAGE, AND HANDLING**

- A. Packing and Shipping:
  - 1. Wrap or crate finished components and assemblies to prevent damage.
  - 2. Include basic installation instructions and assembly instructions when required.
- B. Delivery:
  - 1. Schedule delivery of furniture when space is sufficiently complete that materials can be installed immediately following delivery.

2. DELIVERY MUST BE COORDINATED WITH THE OWNER/ARCHITECT.
  3. Upon delivery, inspect components and assemblies for damage and shortages.
  4. The Contractor shall be responsible for acceptance and unloading of deliveries.
- C. Storage and Protection:
1. Provide protection against loss or damage. Store in dry area out of way of work in progress.
  2. Protect finished surfaces from soiling or damage during handling and installation. Keep covered with polyethylene film or other protective coating.
  3. Contractor shall provide sufficient off-site storage, if needed to accommodate needs.
  4. Contractor shall be responsible for receipt, handling and storage of products and supplies necessary for a complete installation.
  5. Contractor shall be fully responsible to completely remove all packaging, crating, and expended installation / cleaning supplies from the site on a daily basis – none shall be allowed to accumulate on site.
  6. If necessary, the Contractor shall provide secure warehouse or on-site storage for product prior to installation.

### 1.07 WARRANTY

- A. Specific warranties will be listed under Part 2 Products.

## PART 2 PRODUCTS

### 2.01 MODULAR LABORATORY FURNITURE SYSTEM

- A. Manufacturers:
1. Basis of Design: Herman Miller Co/Struc System – See additional information for Pharmacy RX 102/Center workstations.
    - a. Alternate Manufacturers:
      1. Steelcase.
      2. KI
  2. Substitutions: See Section 01 60 00 - Product Requirements.

## PART 3 EXECUTION

### 3.01 EXAMINATION

- A. Contractor shall perform field inspection of the project site, prior to order placement, to verify all conditions affecting the proposed installation.
- B. Contractor shall field verify all dimensions and sizes prior to ordering and installation, INCLUDING LOCATIONS OF WALL POWER AND DATA. IF LOCATIONS OF POWER AND DATA OUTLETS INTERFERE WITH PEDESTAL, SUPPORT, OR PANEL LOCATIONS, ADVISE ARCHITECT OF RECOMMENDED MODIFICATION TO AVOID CONFLICT.**
- C. Contractor shall review the drawings, specifications, and other related documents.
- D. The Contractor shall report any conditions that would adversely affect the installation. By proceeding with the installation the Contractor is indicating acceptance of the existing conditions.
- E. Contractor shall become familiar with the total project scope and the requirement to sequence work in accordance with the project schedule.

### 3.02 FIELD ASSEMBLY

- A. Assemble in accordance with manufacturer's instructions.

### **3.03 PREPARATION**

- A. The Contractor shall pre-clean/prepare the work site surfaces prior to delivery of the furniture.
- B. Contractor shall verify appropriate cleaning procedures with the Architect/Owner; shall clean floor surfaces free of dust, debris, and loose particles immediately prior to installation of furniture, and shall maintain cleanliness throughout the entire installation.

### **3.04 INSTALLATION**

- A. Install in accordance with manufacturer's instructions.**
- B. Contractor shall coordinate installation for all manufacturers involved in the package.

### **3.05 ADJUSTING AND CLEANING**

- A. Adjust all components as required for a proper installation and operation.
- B. Clean furnishings in accordance with manufacturer's instructions for the type of material to be cleaned. Vendor shall wipe down and inspect all components at time of installation and immediately prior to acceptance inspection, to ensure the installation is complete and free from any defects, ready for occupancy, and in showroom condition.
- C. Instruct Owner's personnel in proper care, adjustment, and maintenance of equipment.

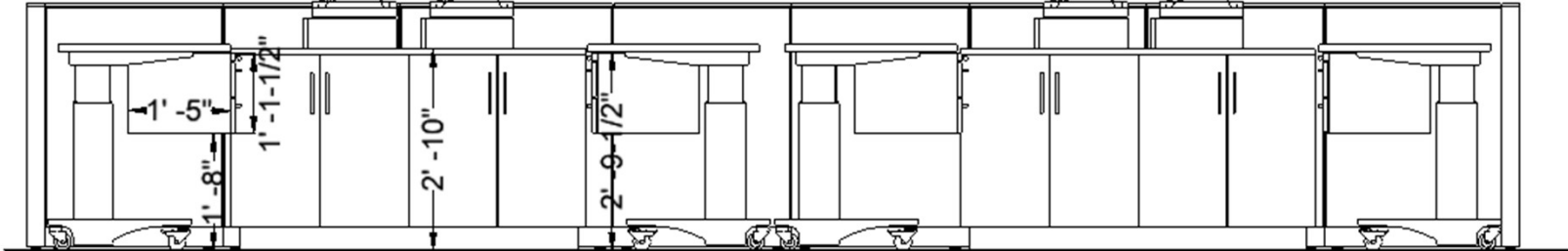
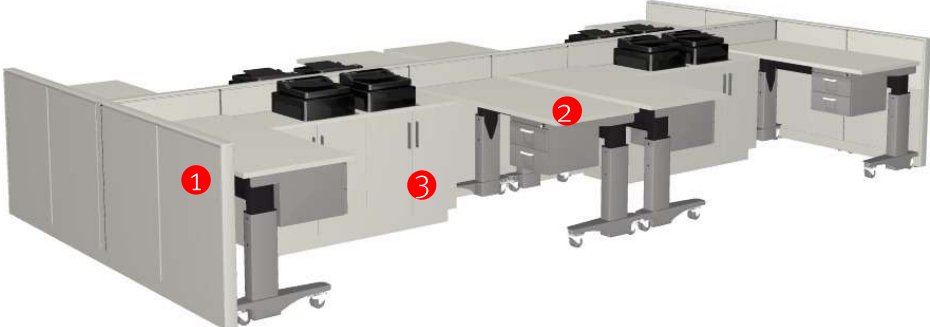
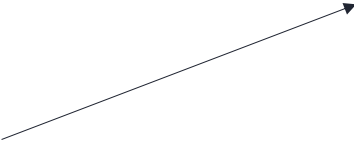
### **3.06 PROTECTION**

- A. Protect all furniture from damage until acceptance by the Owner.

**END OF SECTION**

# Pharmacy RX 102 | Center Workstations

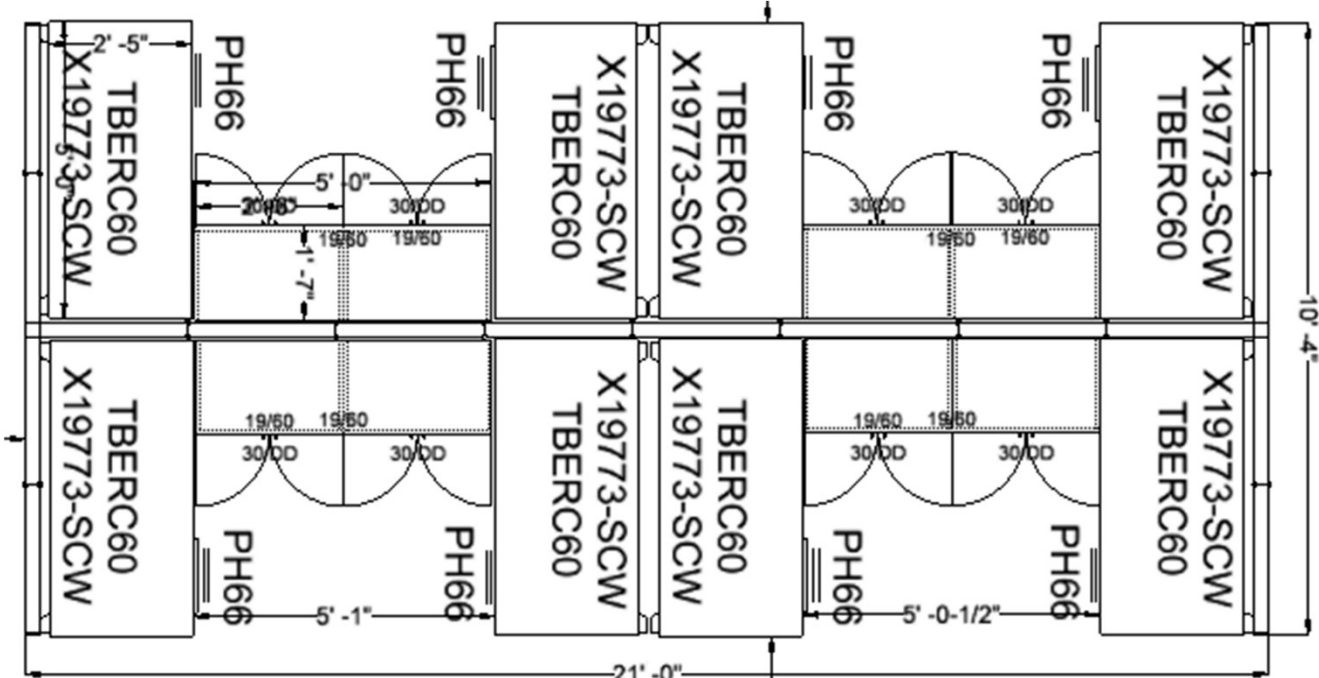
1. Herman Miller Canvas Frame and Tile based workstations
  - i. 42" high frames
  - ii. Ceiling power access (power pole)
  - iii. Power outlets at base
  - iv. Painted metal tiles
  
2. Symbiote Height Adjustable Tables
  - i. Quantity 8
  - ii. 30" x 60"
  - iii. Suspended storage
  - iv. Corian Solid Surface
  - v. Casters
  - vi. Clamp-on convenience outlets
  
3. Herman Miller Mora Storage
  - i. High-pressure laminate storage
  - ii. Bar pull
  - iii. 4" base
  - iv. 1'-7" deep x 5' wide x 2'-10" high- quantity 4



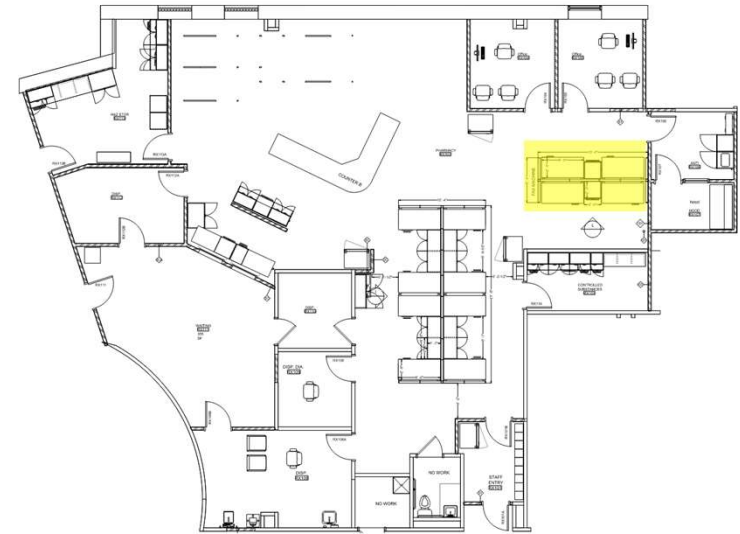
**Pharmacy RX 102 | Center Workstations**



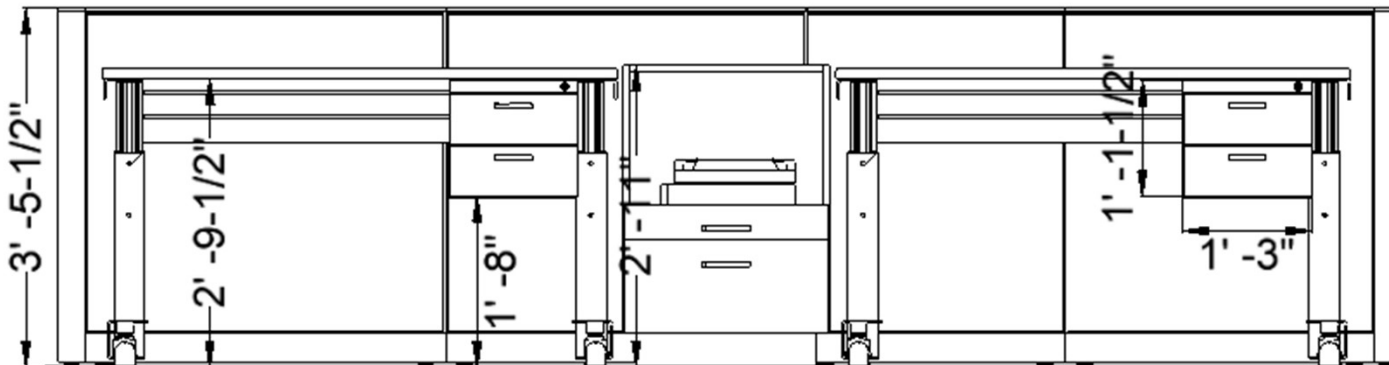
**Pharmacy RX 102 | Center Workstations**



# Pharmacy RX 102 | Tech Workstations

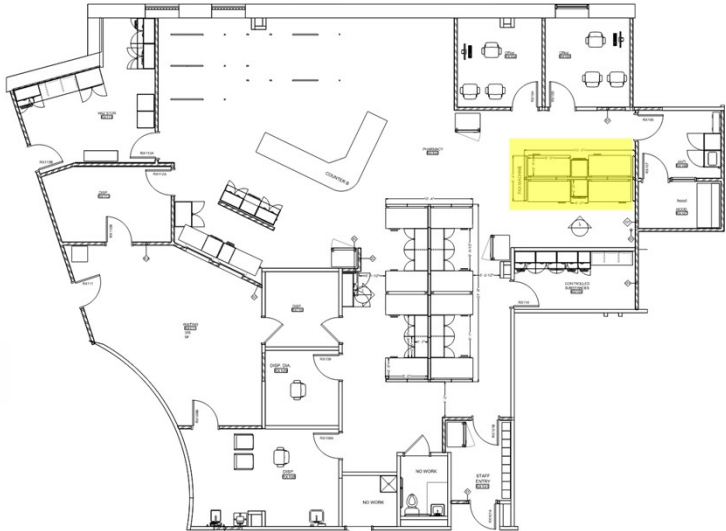


1. Herman Miller Canvas Frame and Tile based workstations
  - i. 42" high frames
  - ii. Ceiling power access (power pole)
  - iii. Power outlets at base
  - iv. Painted metal tiles
2. Symbiote Height Adjustable Tables
  - i. Quantity 6
  - ii. 29" x 52"
  - iii. Suspended storage
  - iv. Corian Solid Surface
  - v. Casters
  - vi. Clamp-on convenience outlets
3. Herman Miller Mora Storage
  - i. High-pressure laminate storage
  - ii. Printer Storage with Box/File
  - iii. Bar pull
  - iv. 4" base
  - v. 2'-0" deep x 2'-0" wide x 2'-7" high- quantity 2



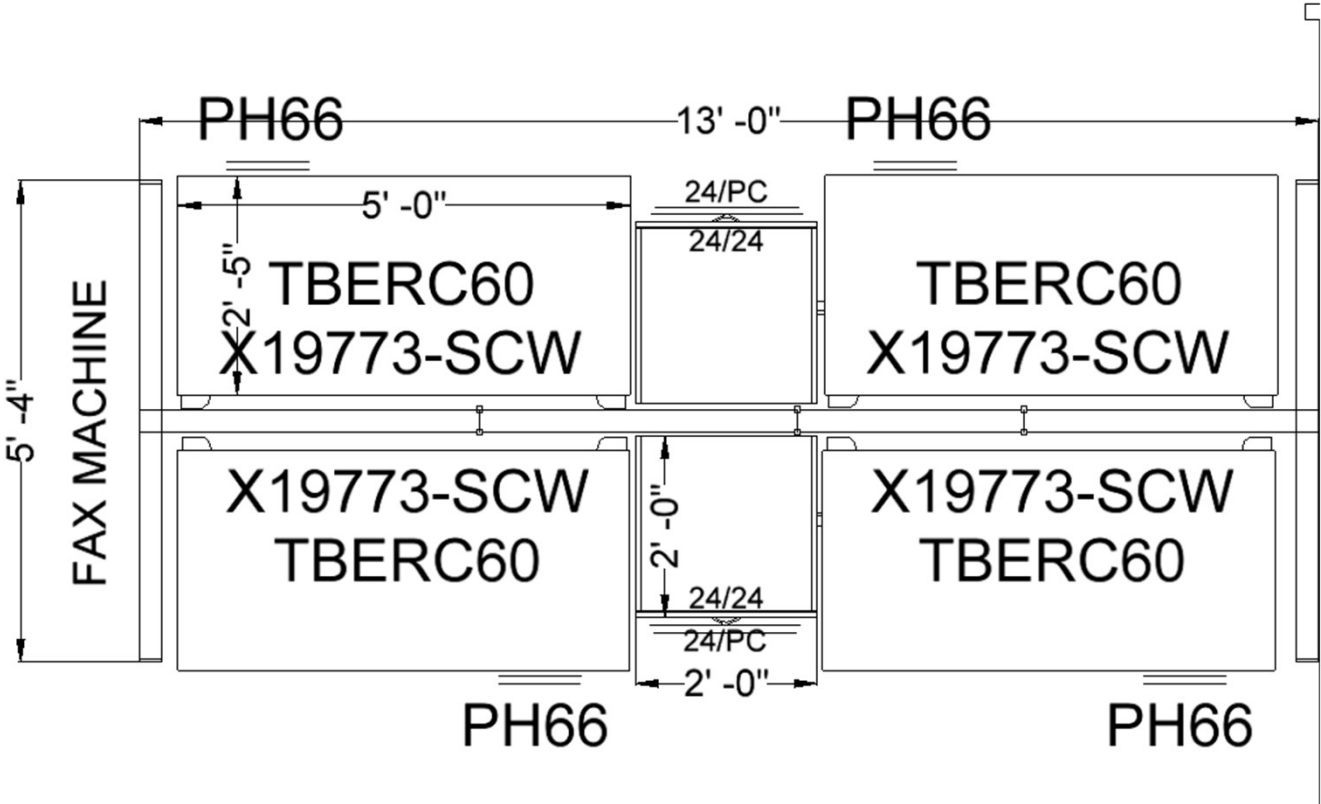


**Pharmacy RX 102 | Tech Workstations**





**Pharmacy RX 102 | Tech Workstations**





**MECHANICAL/ELECTRICAL ADDENDUM #2**

**DIVISION 21 – FIRE PROTECTION**

**CHANGES TO THE PROJECT MANUAL:**

None

**CHANGES TO THE FIRE PROTECTION DRAWINGS:**

None.

**DIVISION 22 – PLUMBING**

**CHANGES TO THE PROJECT MANUAL:**

None

**CHANGES TO THE PLUMBING DRAWINGS:**

None.

**DIVISION 23 – HEATING, VENTILATION, AND AIR CONDITIONING**

**CHANGES TO THE PROJECT MANUAL:**

None.

**CHANGES TO THE MECHANICAL DRAWINGS:**

None.

**DIVISION 26,27 – ELECTRICAL/COMMUNICATIONS**

**CHANGES TO THE PROJECT MANUAL:**

1. Specification section 27 0010 - GENERAL PROVISIONS, has been updated. Refer to attached section for additional information.

**CHANGES TO THE ELECTRICAL DRAWINGS:**

None.

**END OF MECHANICAL/ELECTRICAL ADDENDUM #2**

## **SECTION 270010 - GENERAL PROVISIONS**

### **PART 1 - GENERAL**

#### **1.1 SUMMARY**

- A. This section covers general installation practices and requirements for all work under Division 27.
- B. The General Conditions, Supplementary General Conditions, and Division 01 General Requirements apply to Division 27.
- C. The contractor shall adhere to local ordinances, laws, regulations, the National Electrical Code and OSHA Regulations.
- D. Raceways for Division 27 shall be furnished and installed by the Division 26 Contractor. All equipment, components, wiring and final terminations etc. shall be furnished and installed by Division 27.

#### **1.2 DRAWINGS**

- A. Communications floor plan drawings are too scale and are typically not dimensioned. The Contractor shall not scale drawings for equipment placement and clearances. Dimensions given on drawings shall always take precedence over scaled drawings.
- B. The Contractor shall field verify distances and equipment placements coordinating locations with other trades, construction managers, and general contractor prior to installation.
- C. Change orders requests for additional costs related to the contractor's misunderstanding related to the amount of work involved and lack of knowledge related to the site conditions will not be allowed.

#### **1.3 PERMITS, FEES AND INSPECTIONS**

- A. All permits, inspections, and licenses required for any communications system under the Division 27 specifications shall be the responsibility of the Contractor. The costs of all permits, fees, and inspections shall be included in the Contractor's bid.

#### **1.4 CONTRACTOR QUALIFICATIONS**

- A. The Contractor shall have at least five years experience in the installation of similar systems as specified herein and shall have completed at least two projects of similar size and scope within the last 24 months. The contract shall provide references upon request (including the project name, address, date of implementation, client name, title, telephone number, and project description).
- B. The Contractor bidding on communication systems specified herein shall be certified by the product manufacturer to install, service, and warranty the specified product prior to the time of

bid and throughout the duration of the installation; or, the bidding contractor shall utilize a sub-contractor(s) certified by the product manufacturer to install, service, and warranty the specified product. Manufacturer certifications shall not be project specific and should be valid for any and all projects completed by the Contractor.

- C. The Contractor must maintain a ~~South Dakota Wyoming low-voltage~~ **Electrical** contractor's license as required by the ~~South Dakota Wyoming State Board of Electricity~~ **Electrical Commission**.
- D. The Contractor shall provide copies of certificates for proof of manufacturer's training, manufacturer's certified installer, authorized distributor in the shop drawing submittal and at the request of the engineer to verify compliance with specification prior to recommendations for awarding bid.

## 1.5 SUBMITTALS

- A. Submittal for bidding shall be as stated in the Bidding Requirements.
- B. Material lists, schedule of values, lists of subcontractors, and proof of contractor qualifications shall be provided to Engineer upon request and shall follow the guidelines as stated in the General Requirements (Division 01 of the specifications).
- C. Performance Bonds, Payment Bonds, and Insurance Certificates shall be submitted by the Contractor prior to execution of the contract; refer to General Requirements.
- D. Shop drawings shall be submitted as stated in the General Requirements (Division 01 of the specifications). In addition to items stated in the General Requirements, all communication system shop drawings shall included the following items:
  - 1. Manufacturer's data (specifications, "cut sheets")
  - 2. Detail drawing of any custom panels or jack plates
  - 3. Wiring diagrams for all installed cabling
  - 4. Equipment rack/cabinet layouts
  - 5. Proposed labeling schemes and labeling methods
  - 6. List of cabling distances (typical and maximum) for all structured cabling
  - 7. Equipment room floor plan layouts
  - 8. Copy of Contractors training and authorized installer certificates
  - 9. Copy of structured cabling extended warranty information

**Submit shop drawings bound and labeling in accordance with specification section numbers. In addition, one paper copy of the submittal shall be sent directly to EDI.**

- E. As-Built documentation requirements may be described in additional detail by other Division 27 specification sections. As-built documentation shall included the following items:
  - 1. A copy of the approved shop drawing submittal
  - 2. A complete list of all materials used on the project
  - 3. A copy of the Division 27 specifications (including addendum and change orders)
  - 4. Schematic drawings and block diagrams of components
  - 5. Floor plan drawings including devices locations and labeling
  - 6. Test results and output level readings (i.e., amplifier loads, RF tap reading)
  - 7. Warranties

Submit a minimum two complete copies of all as-built documentation (provide additional copies if more than two copies are required by General Requirements). As-built submittal shall be neatly bound, indexed, tabbed, and labeled.

- F. Close-out documentation shall include all as-built documentation and additional close-out documents as required in the General Requirements.

## 1.6 MATERIALS AND EQUIPMENT

- A. All materials used on this project shall be new. Used and refurbished equipment is not permitted. Provide equipment to site in original packaging whenever practical.
- B. The contractor is responsible for scheduling all deliveries and providing proper receipt, handling, and storage of all materials. Protect all equipment from physical damages (dents, scratches, dust, water, paint, chemicals, and temperature extremes) and vandalism, or theft. The contractor shall replace any damages or stolen equipment. The contractor is responsible for all equipment until the final project acceptance by the Owner.
- C. All material and equipment used on the project shall be as specified. Approval for substitute material will be considered prior to bidding as described in the instructions to bidders. Applications for prior approval will be considered only from Contractors intending to bid on the project.

## PART 2 - PRODUCTS

- 2.1 Not Used

## PART 3 - EXECUTION

### 3.1 GENERAL

- A. All cable, equipment, and components shall be installed in accordance with manufacturer's written instructions, in compliance with NEC, and in accordance with industry standard practices.
- B. All equipment shall be installed in a neat, professional manner, always vertically plumb and securely fastened.
- C. Most pathways for the communications systems are provided by other trades and not part of the Division 27 work; however, the Division 27 communications contractor may be required to create some pathways. Holes in masonry shall be made with rotary drills; impact tools are not permitted. Never penetrate through structural members or architectural finishes without prior approval from the architect or engineer. All penetration work shall be patched, sealed, cleaned, and returned to original conditions. All penetration in fire rated walls and floors shall be sealed with approved fire barriers systems in accordance with manufacturer's instructions.
- D. This communications contractor is responsible for creating a waterproof seal in and around openings to the building exterior created by or used by the communications contractor. All

waterproof sealing materials shall comply with appropriate codes and shall be installed in accordance with manufacturer's instructions.

- E. The communications contractor shall clean up all debris related to Division 27 work on a regular basis leaving the job site in a clean, safe condition.

### 3.2 FINAL ACCEPTANCE

- A. All project review reports ("Punch-Lists") submitted by the engineer shall be completed and signed by the Contractor prior to final project acceptance.
- B. The Contractor shall schedule and conduct a final project review meeting with the Owner and Engineer to discuss the following items:
  - 1. As-built drawings and documentation
  - 2. Test results
  - 3. Warranty and problem resolution procedures
  - 4. Special maintenance procedures
  - 5. Address any questions of the Owner and Engineer
- C. The Contractor shall complete all additional training for the Owner as specified in other Division 27 specification sections.

**END OF SECTION 270010**