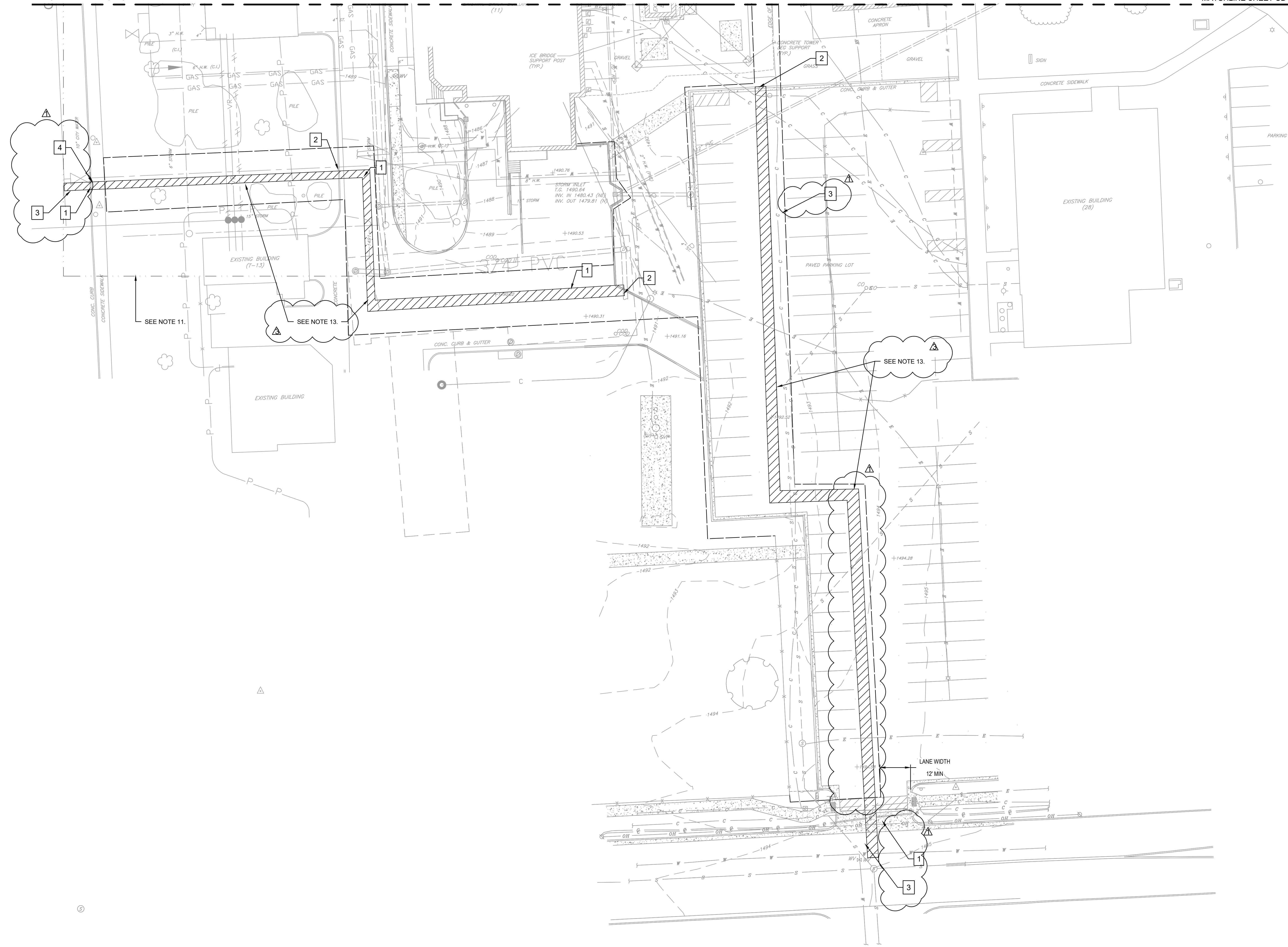


MATCHLINE SHEET CD101

MATCHLINE SHEET CD101



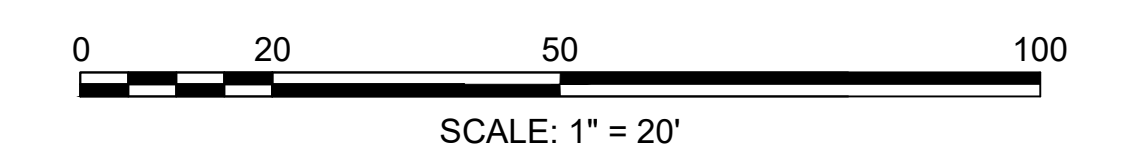
NOTES

1. REFER TO DRAWING C-001 FOR CIVIL LEGEND, ABBREVIATIONS, AND GENERAL NOTES.
2. REFER TO ARCHITECTURAL, STRUCTURAL, MECHANICAL AND ELECTRICAL DRAWINGS.
3. REMOVE AND DISPOSE OF PAVEMENT TO THE LIMITS REQUIRED FOR THE INSTALLATION OF NEW WORK.
4. ALL PAVEMENT SHALL BE SAWCUT TO ALLOW THE BACKFILL TO BE COMPACTED AND PAVEMENT PATCHED AS PER THE SPECIFICATIONS AND SITE DETAILS.
5. REMOVE AND DISPOSE OF CONCRETE SIDEWALKS TO THE LIMITS REQUIRED FOR NEW WORK.
6. PROTECT TREES IN THE VICINITY OF THE LIMITS OF WORK UNLESS NOTED OTHERWISE.
7. PROTECT EXISTING UTILITIES IN PLACE. IF CONFLICT SUBMIT RFI TO VA COR TO DETERMINE AN ALTERNATE SOLUTION.
8. SOIL MAY BE STOCKPILED FOR FUTURE RE-USE AS BACKFILL ONLY. SURPLUS SOIL SHALL BE REMOVED AND DISPOSED.
9. REMOVE AND DISPOSE OF TOPSOIL.
10. CONTRACTOR SHALL COMPLY WITH CITY OF SIOUX FALLS DEPARTMENT OF PUBLIC WORKS STREET OPENING AND SERVICE CONNECTION REQUIREMENTS.
11. UTILITY LOCATIONS WITHIN THIS LOCATION ARE APPROXIMATE FROM VA PROVIDED REFERENCE DOCUMENTS. CONTRACTOR TO VERIFY ALL UTILITIES IN FIELD.
12. PROTECT FIXTURES (I.E. EXISTING LIGHT POLES, FIRE HYDRANTS, AND SIGNS) TO REMAIN IN PLACE WITHIN THE LIMIT OF WORK UNLESS NOTED OTHERWISE. THE CONTRACTOR IS RESPONSIBLE FOR REPLACEMENT OR REPAIR OF FIXTURES SHOULD THEY BE DAMAGED DURING CONSTRUCTION.
13. UTILITY INSTALLATION IN THIS LOCATION MUST BE DONE IN A TIMELY MANNER TO MINIMIZE DISTURBANCE OF DAILY VA ACTIVITIES AND USAGE. UPON COMPLETION OF WORK, CONSTRUCTION FENCE TO BE REMOVED TO ALLOW CONTINUED USE BY THE VA.

KEY NOTES

- 1 REMOVE AND DISPOSE OF CONCRETE PAVEMENT.
- 2 REMOVE AND DISPOSE OF CURB.
- 3 REMOVE AND DISPOSE OF ASPHALT PAVEMENT.
- 4 REMOVE AND DISPOSE SIDEWALK.

2 CIVIL EXISTING CONDITIONS/DEMOLITION PLAN
Scale: 1" = 20'



ADDENDUM 3	01-17-2025
ADDENDUM 2 (NO CHANGES TO THIS SHEET)	09-12-2024
ADDENDUM 1	08-09-2024
Revisions:	Date:

CONSULTANT

Mabbett®
Scientists | Engineers | Program Managers
Mabbett & Associates, Inc.
105 Central Street Stoneham, MA 02180-1248
T. 781-275-6950
www.mabbett.com

ARCHITECT/ENGINEER OF RECORD

paradigm
Architecture | Engineering | Design-Build
200 Envoy Circle, Suite 201, Louisville, KY 40299
www.paradigmusa.com

STAMP

Office of Construction and Facilities Management

VA U.S. Department of Veterans Affairs

Drawing Title

CIVIL EXISTING CONDITIONS/DEMOLITION PLAN

Approved: Project Director

Phase

100% CONSTRUCTION DOCUMENT SUBMISSION

FULLY SPRINKLERED

Project Title

SIOUX FALLS BOILER PLANT

Location

VAMC-Sioux Falls: 2501 W 22nd St, Sioux Falls, SD 57105

Issue Date

08-09-2024

Checked

RBB

Drawn

EG

Project Number

438-22-900

Building Number

12

Drawing Number

CD102

3 OF 17