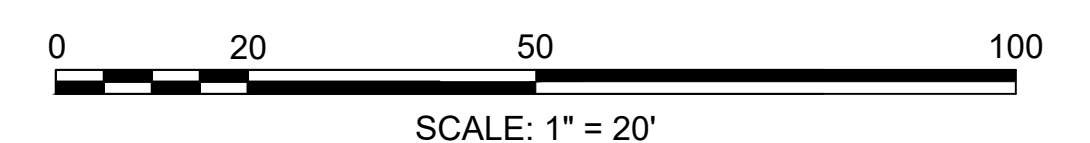
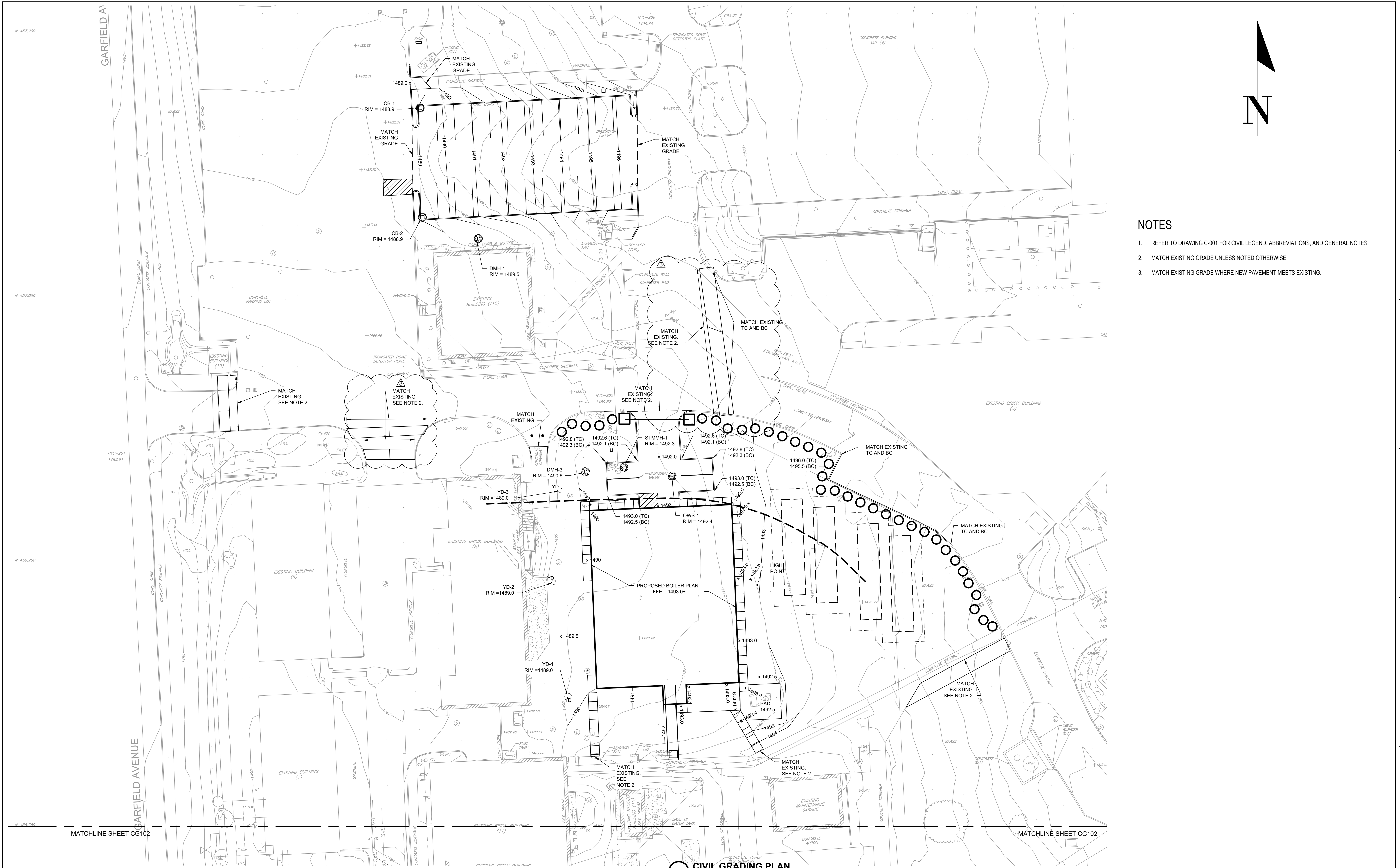


NOTES

- 1. REFER TO DRAWING C-001 FOR CIVIL LEGEND, ABBREVIATIONS, AND GENERAL NOTES.
- 2. MATCH EXISTING GRADE UNLESS NOTED OTHERWISE.
- 3. MATCH EXISTING GRADE WHERE NEW PAVEMENT MEETS EXISTING.



| | | | | | | | | | |
|--|---|---|---|------------------|--|--|--|---|---|
| Revisions: ADDENDUM 3 ADDENDUM 2 (NO CHANGES TO THIS SHEET) ADDENDUM 1 (NO CHANGES TO THIS SHEET) | Date: 01-17-2025 09-12-2024 08-09-2024 | CONSULTANT Mabbett® Scientists Engineers Program Managers Mabbett & Associates, Inc. 105 Central Street Stoneham, MA 02180-1248 T. 781-275-6050 www.mabbett.com | ARCHITECT/ENGINEER OF RECORD paradigm Architecture Engineering Design-Build 200 Envoy Circle, Suite 201, Louisville, KY 40299 www.paradigmusa.com | STAMP | Office of Construction and Facilities Management U.S. Department of Veterans Affairs | Drawing Title CIVIL GRADING PLAN | Phase 100% CONSTRUCTION DOCUMENT SUBMISSION | Project Title SIOUX FALLS BOILER PLANT | Project Number 438-22-900 |
| | | | | | | Approved: Project Director | FULLY SPRINKLERED | Location VAMC-Sioux Falls: 2501 W 22nd St, Sioux Falls, SD 57105 | Building Number 12 |
| | | | | | | Issue Date 08-09-2024 | Checked RBB | Drawn EG | Drawing Number CG101 6 OF 17 |