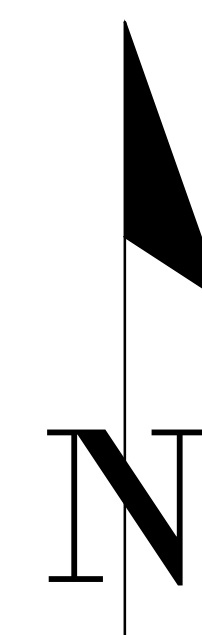
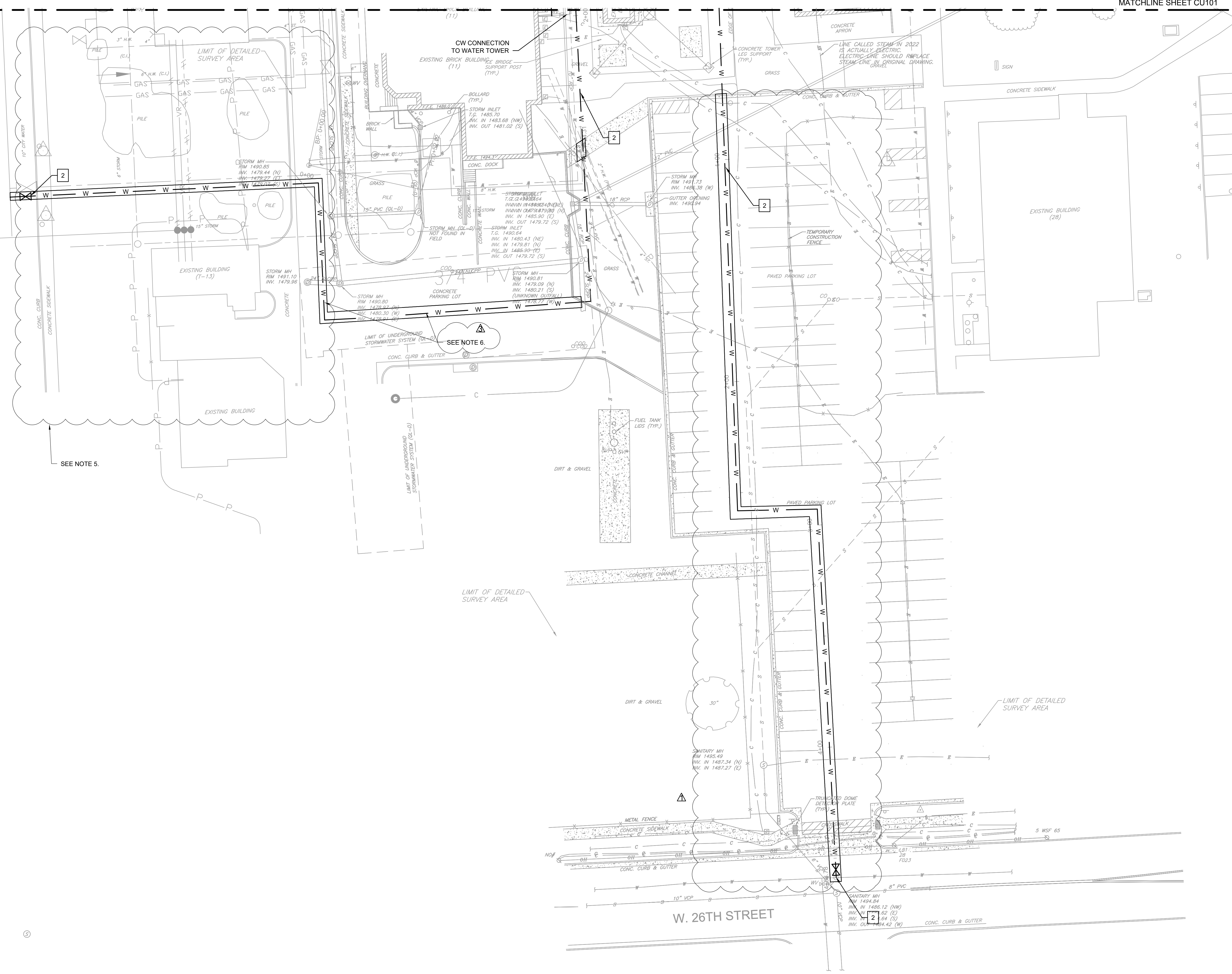


MATCHLINE SHEET CU101

MATCHLINE SHEET CU101



NOTES

1. REFER TO DRAWING C-001 FOR CIVIL LEGEND, ABBREVIATIONS, AND GENERAL NOTES.
2. REFER TO ARCHITECTURAL, STRUCTURAL, MECHANICAL, AND ELECTRICAL DRAWINGS FOR MORE INFORMATION.
3. REFER TO CIVIL UTILITY PROFILE SHEETS, CJ301 AND CJ302.
4. COMPLY WITH CITY OF SIOUX FALLS DEPARTMENT OF PUBLIC WORKS STREET OPENING AND SERVICE CONNECTION.
5. UTILITIES SHOWN IN THIS LOCATION WERE OBTAINED FROM VA REFERENCE DOCUMENTS. CONTRACTOR IS REQUIRED TO VERIFY ALL LOCATIONS IN FIELD.
6. SEE CU103 AND NOTE 12 ON CG104 FOR PHASING REQUIREMENTS OF INSTALLATION.

KEY NOTES

1. NOT USED.
2. FURNISH AND INSTALL GATE VALVE AND 8-INCH PVC WATER MAIN (DETAIL F1, CK501 AND DETAIL C3, CK503).

2 CIVIL UTILITY PLAN
Scale: 1" = 20'



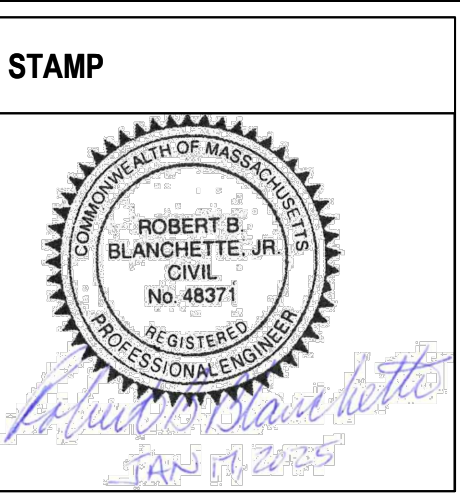
ADDENDUM 3	01-17-2025
ADDENDUM 2 (NO CHANGES TO THIS SHEET)	09-12-2024
ADDENDUM 1	08-09-2024
Revisions:	Date:

CONSULTANT

Mabbett®
Scientists | Engineers | Program Managers
Mabbett & Associates, Inc.
105 Central Street Stoneham, MA 02180-1248
T. 781-275-6950
www.mabbett.com

ARCHITECT/ENGINEER OF RECORD

paradigm
Architecture | Engineering | Design-Build
200 Envoy Circle, Suite 201, Louisville, KY 40299
www.paradigmusa.com



Office of Construction and Facilities Management

VA U.S. Department of Veterans Affairs

Drawing Title

CIVIL UTILITY PLAN

Approved: Project Director

Phase

100% CONSTRUCTION DOCUMENT SUBMISSION

FULLY SPRINKLERED

Project Title

SIOUX FALLS BOILER PLANT

Location

VAMC-Sioux Falls: 2501 W 22nd St, Sioux Falls, SD 57105

Issue Date

08-09-2024

Checked

RBB

Drawn

EG

Project Number

438-22-900

Building Number

12

Drawing Number

CU102

11 OF 17