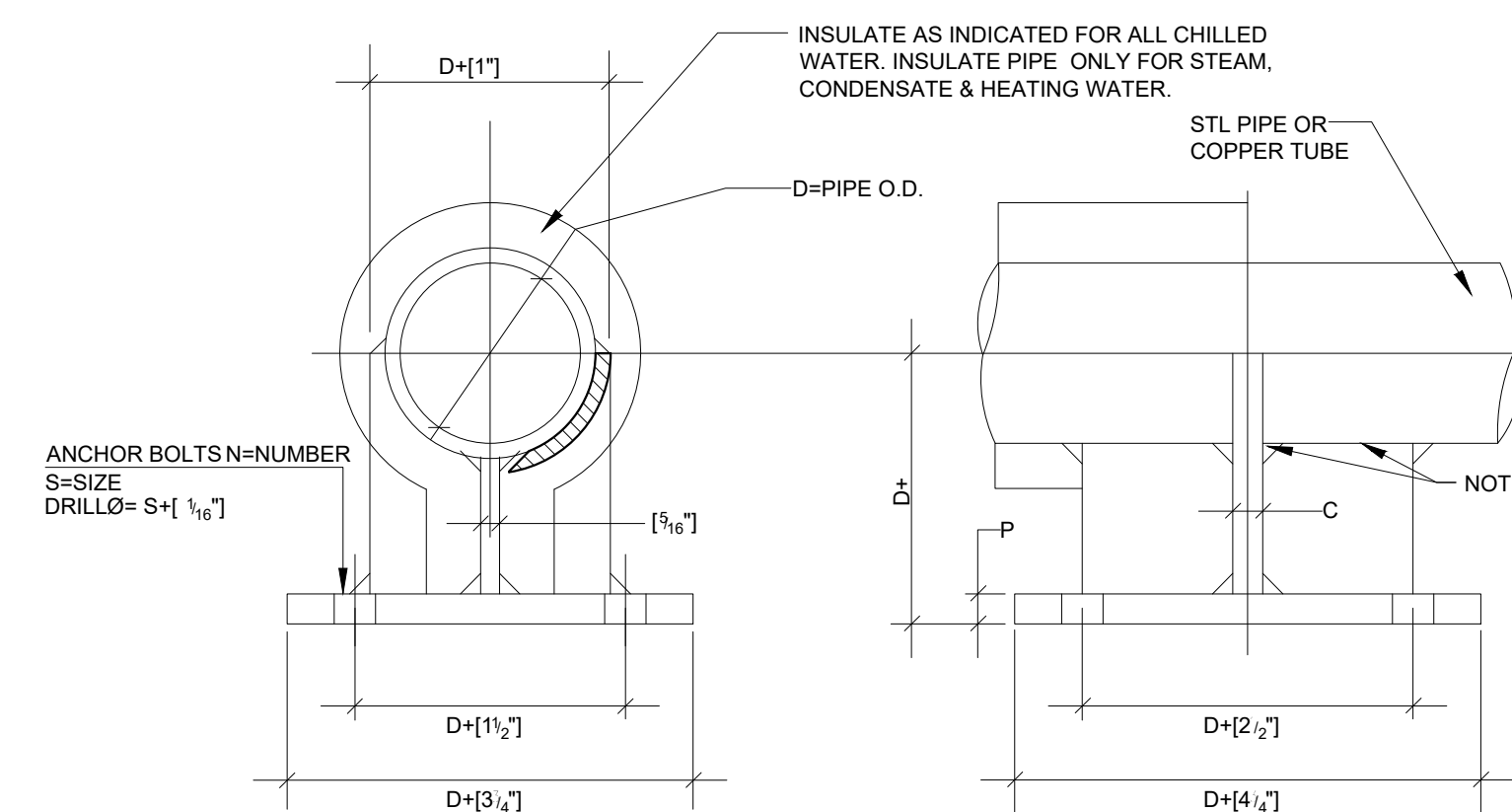


1 CONCRETE EQUIPMENT BASES  
NTS

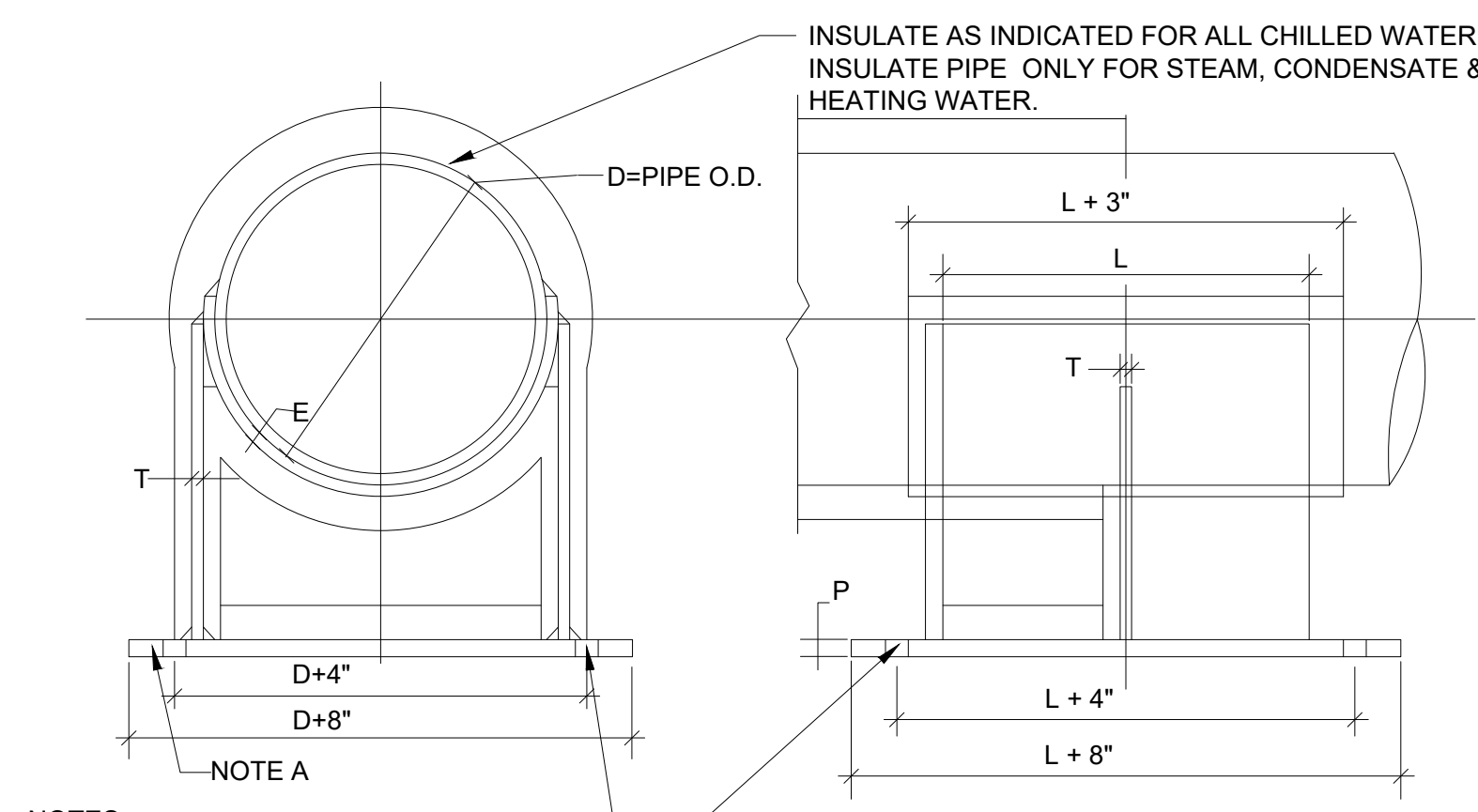
PIPE ANCHOR SCHEDULE					BOLT PATTERN
D	P	C	N	S	
6	8 1/2	3/8	3/4	4	[Pattern]
8	10	3/8	3/4	4	
4	5 1/2	3/8	3/4	4	[Pattern]
3	4 1/2	3/8	3/4	4	
2 1/2	3 1/2	3/8	3/4	4	[Pattern]
2	3	3/8	3/4	4	
1 1/2	2 1/2	3/8	3/4	4	[Pattern]

PIPE ANCHOR SCHEDULE										BOLT PATTERN
D	L	P	T	E	N	S				
6	8 1/2	3/8	3/4	4	4	4				[Pattern]
8	10	3/8	3/4	4	4	4				
10	12	3/8	3/4	4	4	4				[Pattern]
12	14	3/8	3/4	4	4	4				
14	16	3/8	3/4	4	4	4				[Pattern]
16	18	3/8	3/4	4	4	4				
18	20	3/8	3/4	4	4	4				[Pattern]



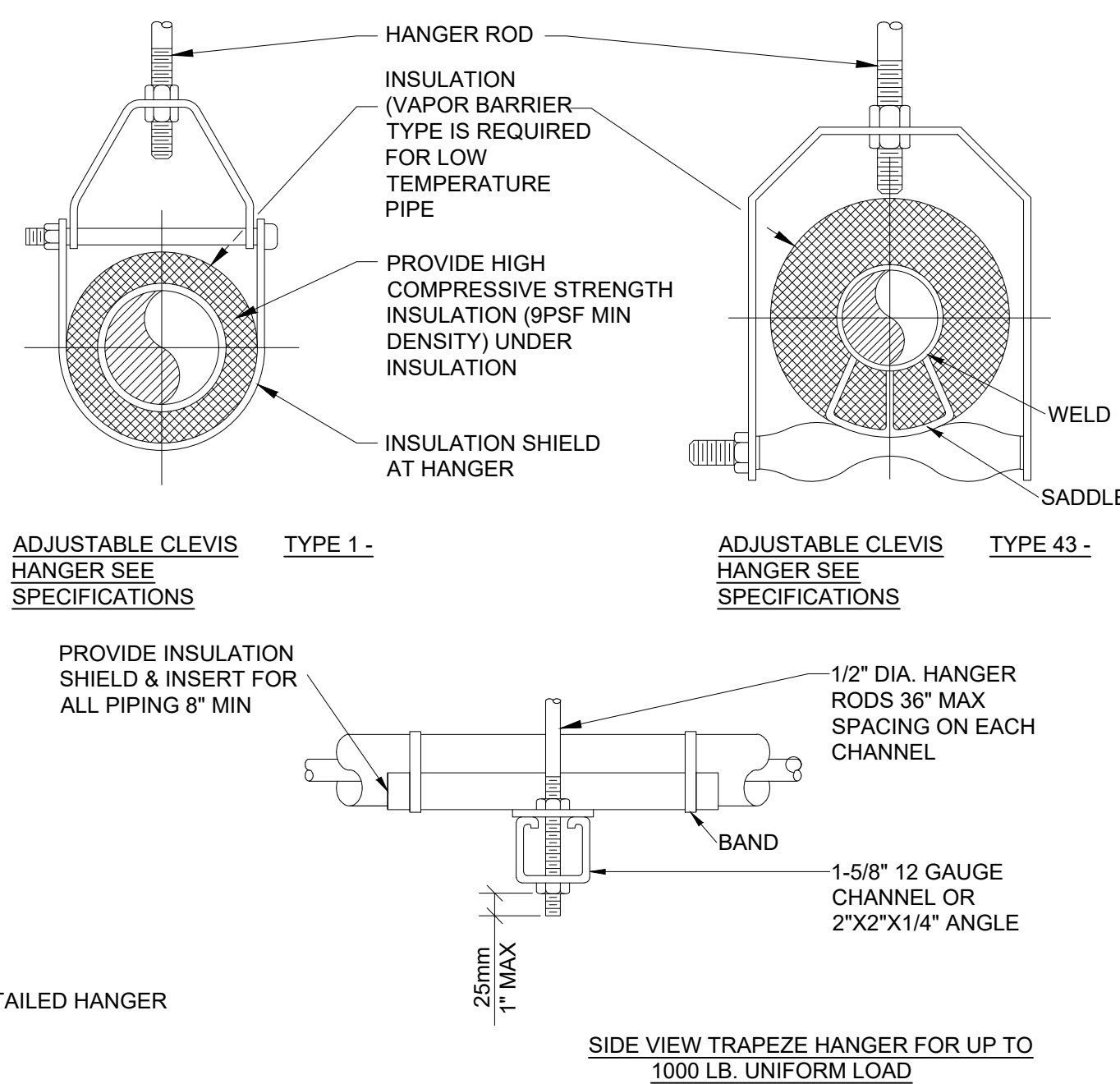
NOTE: WHERE USED FOR COPPER TUBE OR PIPE, BRAZE TO FABRICATED STEEL ANCHOR

2 SMALL PIPE ANCHOR 1 1/2" - 4"  
NTS



NOTES:  
A. INSTALL WALL PLATE FIRST THEN WELD ON REMAINING ASSEMBLY. ONE WALL PLATE FOR BOTH CHILLED WATER S.&R. IS OPTIONAL.

3 LARGE PIPE ANCHOR 6" - 8"  
NTS

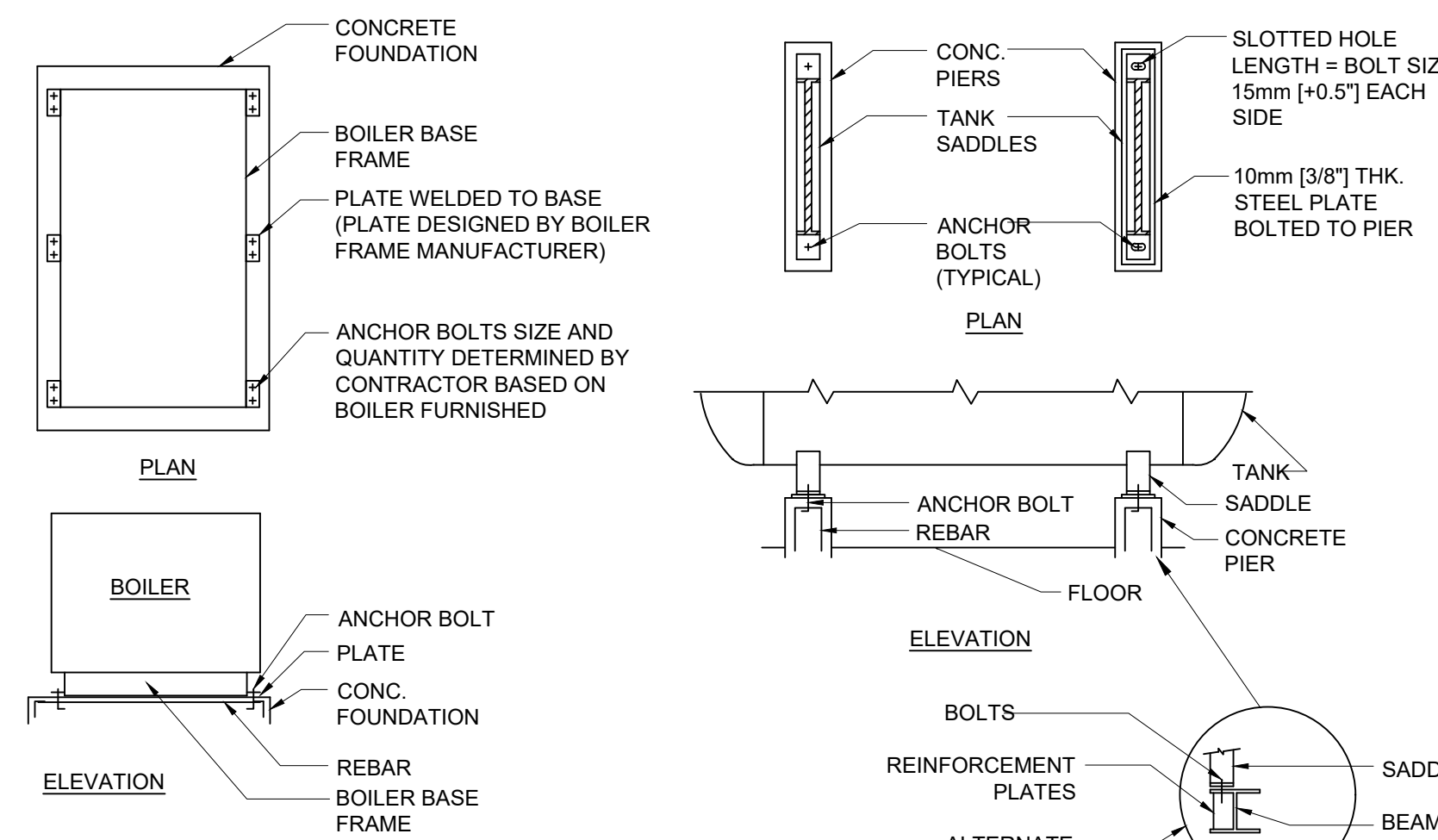


NOTE: SEE SPECIFICATIONS FOR DETAILED HANGER REQUIREMENTS

MAXIMUM PIPE/TUBING SUPPORT SPACING																			
NOM. SIZE IN	[THRU]	[1]	[1 1/4]	[1 1/2]	[2]	[2 1/2]	[3]	[4]	[5]	[6]	[8]	[10]	[12]	[14]	[16]	[18]	[20]	[24]	
PIPE [FT]	[7]	[7]	[7]	[9]	[10]	[11]	[12]	[14]	[16]	[17]	[19]	[22]	[23]	[25]	[27]	[28]	[30]	[32]	
TUBING [FT]	[5]	[6]	[7]	[8]	[8]	[9]	[10]	[12]	[13]	[14]	[16]	-	-	-	-	-	-	-	

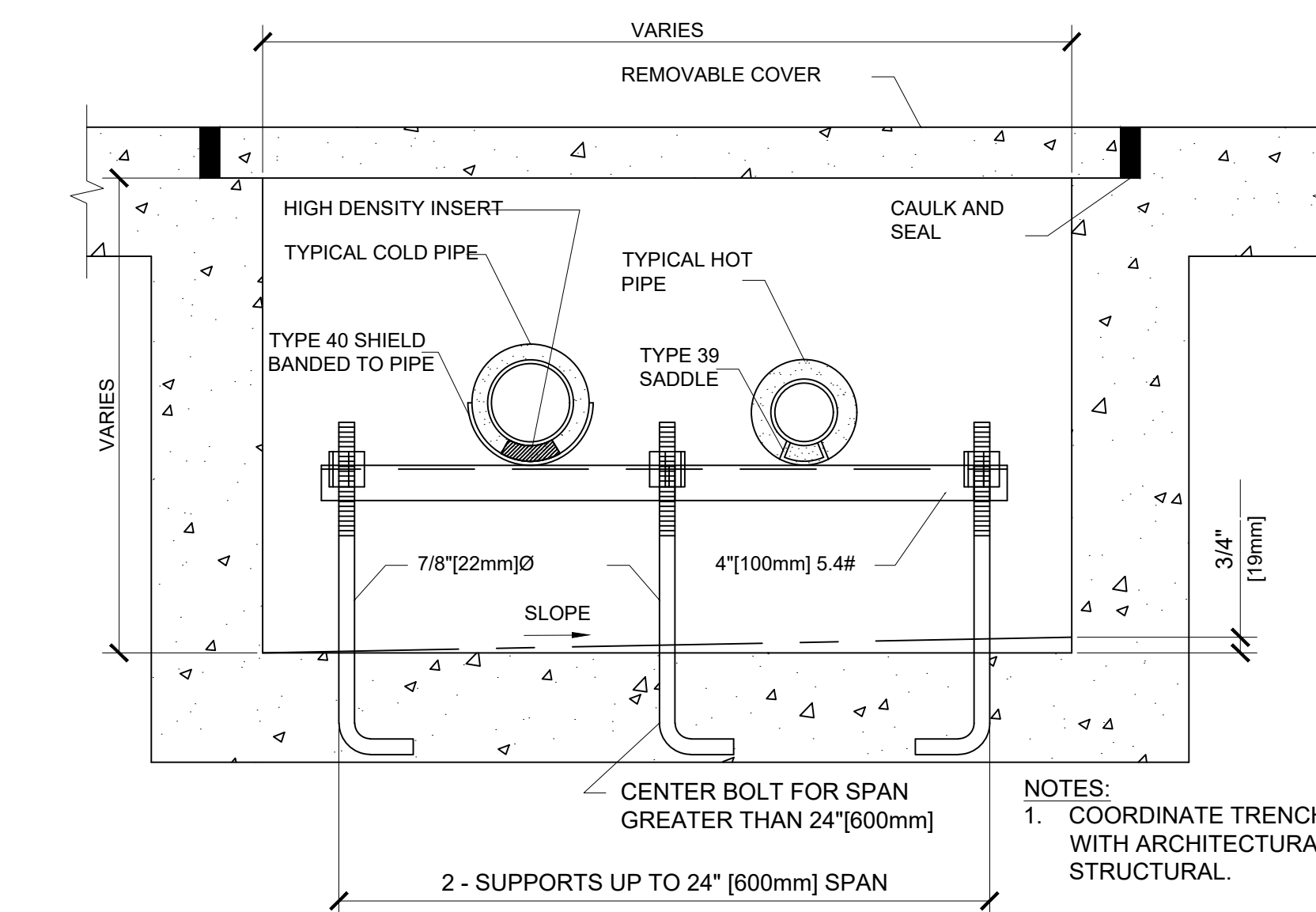
NOTE: FOR TRAPEZE HANGER TAKE SPACING OF SMALLEST SIZE ON TRAPEZE.

4 PIPE HANGERS  
NTS



NOTES:  
1. PROVIDE SLOTTED HOLES IN PLATES TO ALLOW THERMAL EXPANSION IF RECOMMENDED BY BOILER MANUFACTURER.

5 EQUIPMENT ANCHORING - PACKAGED BOILER AND DEAERATOR AND CONDENSATE STORAGE TANKS  
NTS



NOTES:  
1. COORDINATE TRENCH DETAIL WITH ARCHITECTURAL & STRUCTURAL.  
2. REFER TO SPECIFICATION, SEALING & CAULKING.

6 PIPE TRENCH IN A BUILDING  
NTS



Revisions:	Date:

CONSULTANT

**BURNS & MCDONNELL**  
Burns & McDonnell Engineering Company, Inc.  
9450 WARD PARKWAY, KANSAS CITY, MO

ARCHITECT/ENGINEER OF RECORD

**paradigm**  
Architecture | Engineering | Design-Build  
200 Envoy Circle, Suite 201, Louisville, KY 40299  
www.paradigmusa.com

STAMP

Office of Construction and Facilities Management  
**VA**

Drawing Title: PIPING DETAILS

Approved: \_\_\_\_\_

Phase: 100% CONSTRUCTION DOCUMENTS

FULLY SPRINKLERED

Project Title: SIOUX FALLS BOILER PLANT

Location: VAMC-Sioux Falls: 2501 W 22nd St. Sioux Falls, SD 57105

Issue Date: 06/25/2024

Checked: BDI

Drawn: MFM

Project Number: 438-22-900

Building Number: 12

Drawing Number: MP500