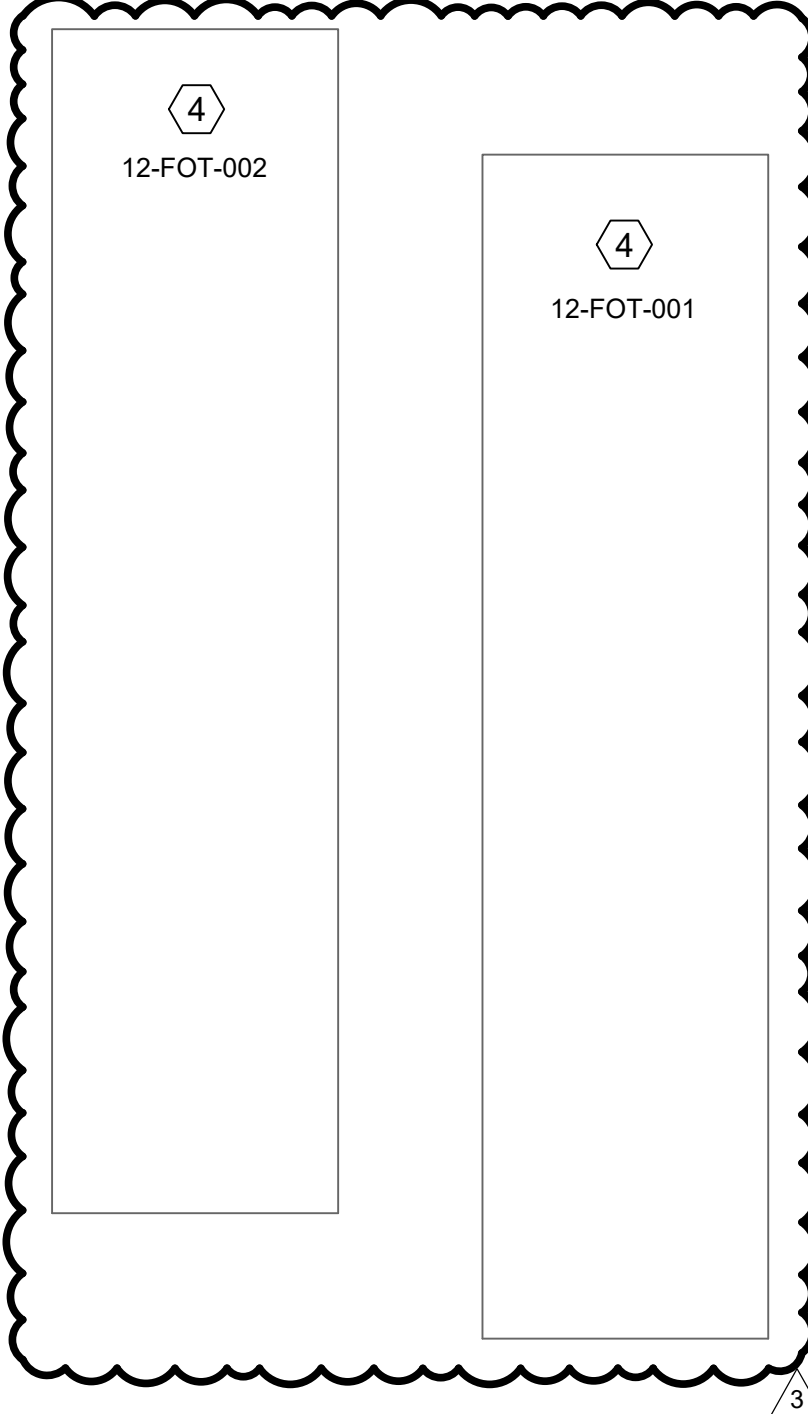
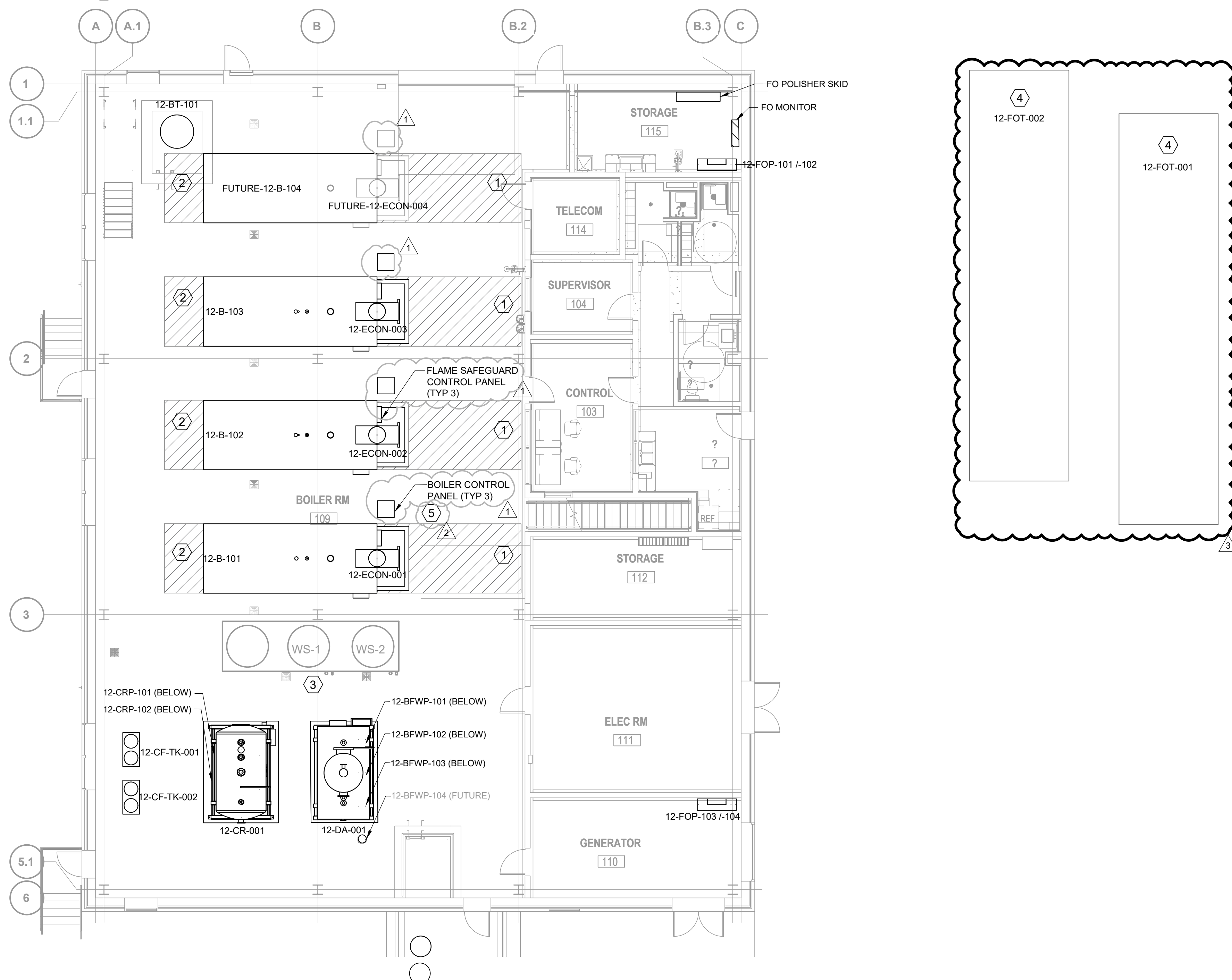


- NOTES:
- FOR GENERAL NOTES, SYMBOLS, AND ABBREVIATIONS SEE DRAWING M-000.
- KEYED NOTES:
- BOILER TUBE PULL CLEARANCE.
  - BOILER DOOR SWING CLEARANCE.
  - REFER TO PLUMBING PLAN, PL101 FOR PLUMBING EQUIPMENT PLAN.
  - REFER TO CIVIL DRAWINGS FOR BELOW GRADE FUEL OIL STORAGE TANK DETAILS.
  - LOCATE BOILER CONTROL PANEL SO IT CAN BE SEEN FROM THE CONTROL ROOM. COORDINATE THE EXACT LOCATION OF THE CONTROL PANEL WITH VA SIOUX FALLS BOILER ROOM OPERATORS AND DESIGN MANAGER.



MECHANICAL STEAM EQUIPMENT PLAN  
FIRST FLOOR  
E5  
1/8" = 1' 0"  
TRUE PLAN



△	Addendum 1	08-09-2024
△	Addendum 2	09-12-2024
△	Addendum 3	01-17-2025
Revisions:		Date:

CONSULTANT

**BURNS & McDONNELL**  
Burns & McDonnell Engineering Company, Inc.  
9450 WARD PARKWAY, KANSAS CITY, MO

ARCHITECT/ENGINEER OF RECORD

**paradigm**  
Architecture | Engineering | Design-Build  
200 Envoy Circle, Suite 201, Louisville, KY 40299  
www.paradigmusa.com

STAMP

Office of  
Construction  
and Facilities  
Management

Drawing Title	MECHANICAL EQUIPMENT PLAN
Approved:	

Phase	100% CONSTRUCTION DOCUMENTS
FULLY SPRINKLERED	

Project Title	SIOUX FALLS BOILER PLANT
Location	VAMC-Sioux Falls: 2501 W 22nd St, Sioux Falls, SD 57105
Issue Date	06/25/2024
Checked	BDI
Drawn	MFM

Project Number	438-22-900
Building Number	12
Drawing Number	MO100