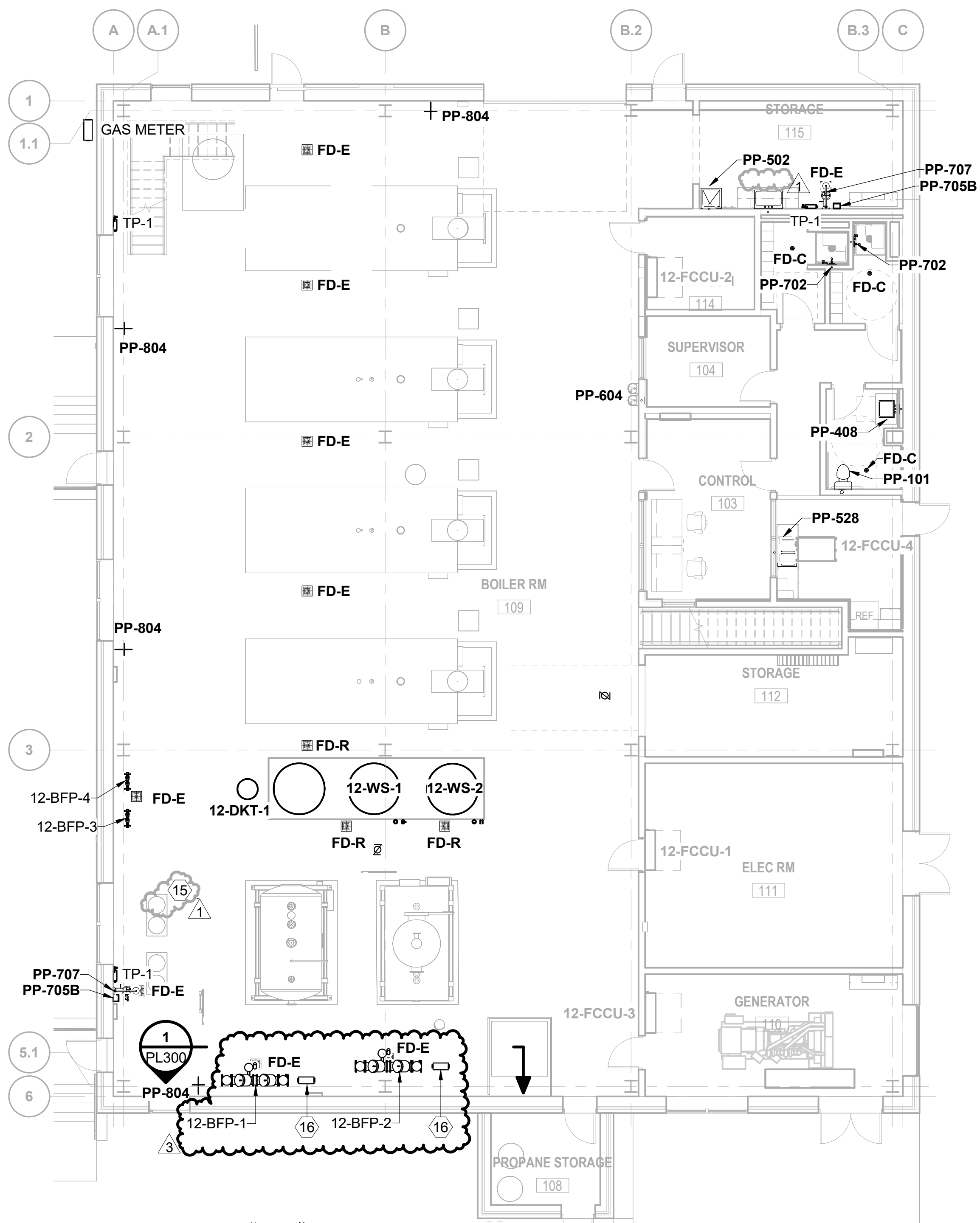
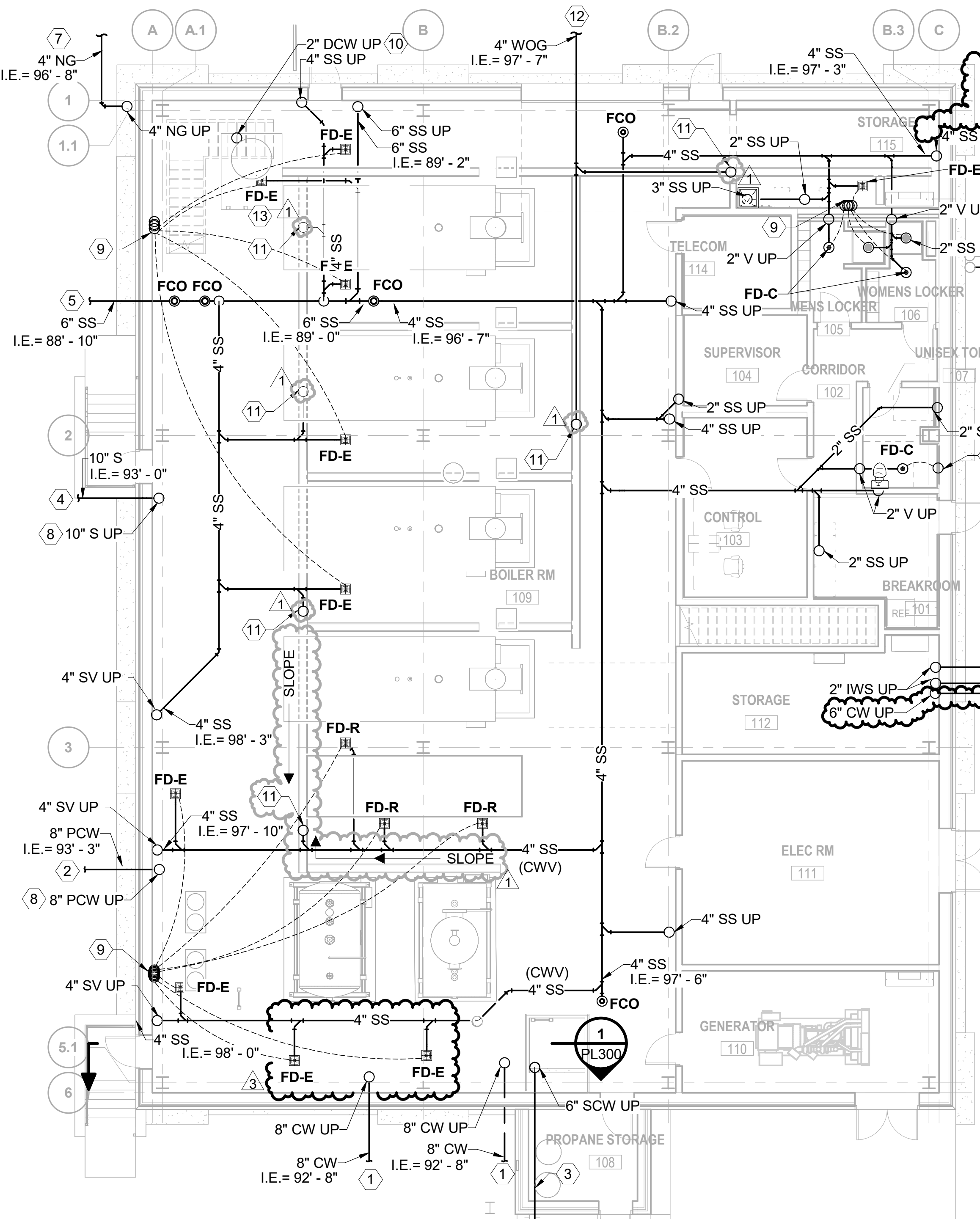


- NOTES:**
- FOR GENERAL NOTES, SYMBOLS, AND ABBREVIATIONS SEE DRAWING PL000.
 - FOR FIXTURE CONNECTION SIZES, REFER TO PLUMBING FIXTURE SCHEDULE ON PL600.
 - ALL ITEMS THAT REQUIRE ACCESS, SUCH AS FOR OPERATING, CLEANING, SERVICING, MAINTENANCE, AND CALIBRATION, SHALL BE EASILY AND SAFELY ACCESSIBLE BY PERSONS STANDING AT FLOOR LEVEL, OR STANDING ON PERMANENT PLATFORMS, WITHOUT THE USE OF PORTABLE LADDERS. EXAMPLES OF THESE ITEMS INCLUDE, BUT ARE NOT LIMITED TO: ALL TYPES OF VALVES, FILTERS AND STRAINERS, TRANSMITTERS, CONTROL DEVICES. PRIOR TO COMMENCING INSTALLATION WORK, REFER CONFLICTS BETWEEN THIS REQUIREMENT AND CONTRACT DOCUMENTS TO THE COR FOR RESOLUTION. FAILURE OF THE CONTRACTOR TO RESOLVE, OR POINT OUT ANY ISSUES WILL RESULT IN THE CONTRACTOR CORRECTING AT NO ADDITIONAL COST OR TIME TO THE GOVERNMENT.
 - ALL INVERT ELEVATIONS (I.E.) ARE BASED ON FINISHED FLOOR = 100'-0".

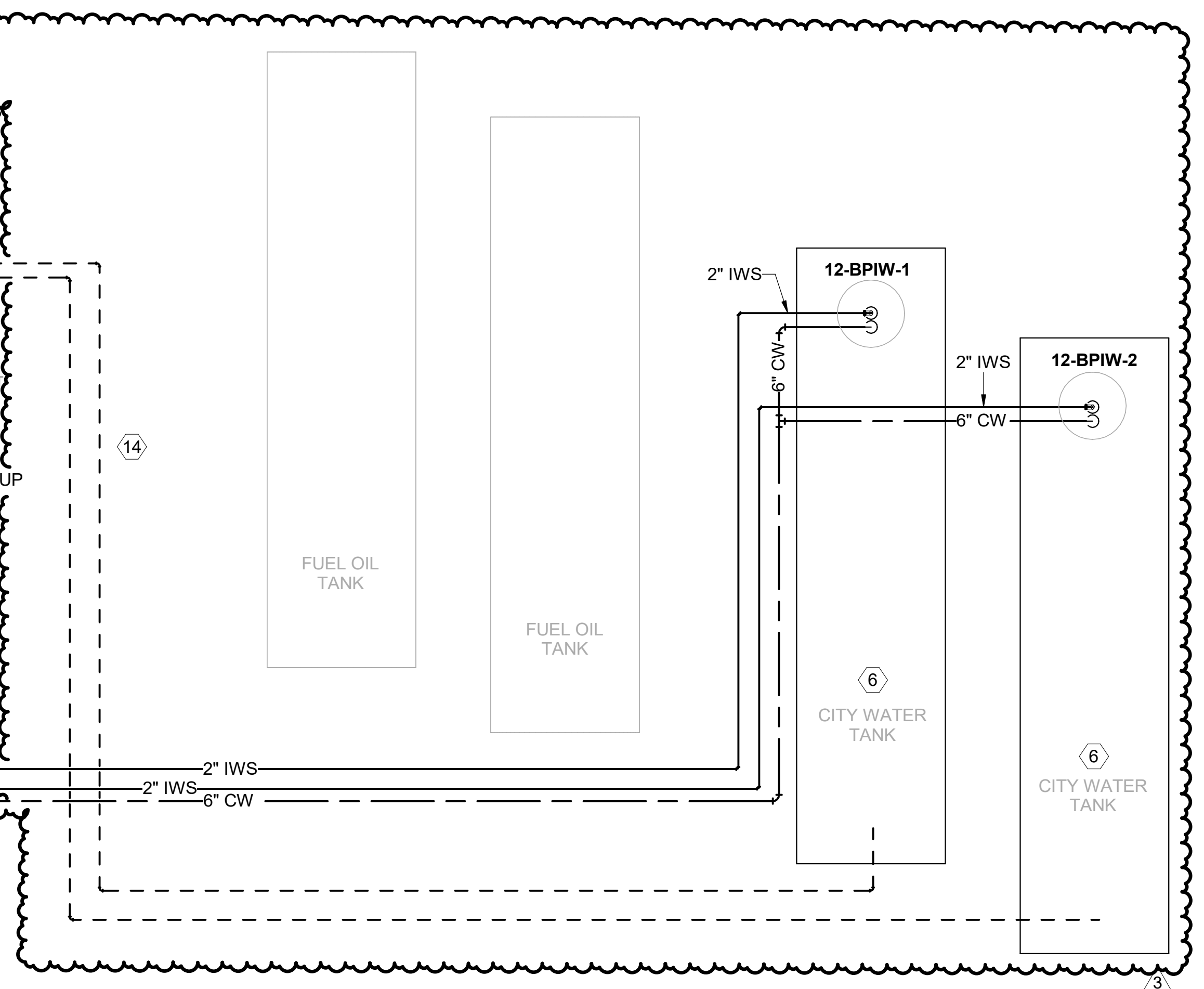
- KEYED NOTES: (#)**
- CITY WATER ENTRY. REFER TO CIVIL DRAWING C104 FOR PIPE CONTINUATION.
 - CITY WATER LINE TO WATER TOWER. REFER TO CIVIL DRAWING CU101 FOR PIPE CONTINUATION.
 - SOFT WATER LINE TO BUILDING 11. REFER TO PL201 FOR PIPE CONTINUATION.
 - STORM WATER BUILDING EXIT. REFER TO CIVIL DRAWING CU101 FOR PIPE CONTINUATION.
 - SANITARY SEWER BUILDING EXIT. REFER TO CIVIL DRAWING CU101 FOR PIPE CONTINUATION.
 - TANKS SHOWN FOR CLARITY. REFER TO CIVIL DRAWINGS FOR TANK LOCATIONS AND WATER LINE TIE-IN DETAILS. REFER TO 33 16 00 FOR SPECIFICATIONS AND PL500.
 - NATURAL GAS ENTRY. REFER TO CIVIL DRAWING CU101 FOR PIPE CONTINUATION.
 - PROVIDE SLEEVE IN FOUNDATION THAT EXTENDS 6" ABOVE AND BELOW FOUNDATION. SLEEVE SHALL BE 2" LARGER THAN PIPE.
 - UP TO TRAP PRIMER. ROUTE TRAP PRIMER LINES TO FLOOR DRAINS AS SHOWN.
 - ROUTE DOMESTIC WATER TO BLOWDOWN TANK. REFER TO DRAWING MP101.
 - 4" UP TO TRENCH OUTLET.
 - TO OIL WATER SEPARATOR. REFER TO CIVIL DRAWING CG101 FOR PIPE CONTINUATION.
 - BLOWDOWN PIT SHALL HAVE 6" OUTLET ON FD-E.
 - ROUTE 2" VENT FROM WATER TANKS TO BUILDING WALL. ROUTE 6'-0" ABOVE GRADE AND SUPPORT FROM BUILDING STRUCTURE. INCLUDE RAIN CAP ON VENT LINE.
 - CAUSTIC STORAGE TANK AND PUMP FOR DEALKALIZER. REFER TO PROJECT SPECIFICATIONS 22 67 21.
 - INSTALL CITY WATER METER PRIOR TO BACK FLOW ASSEMBLY. REFER TO CITY WATER METER INSTALLATION DETAILS ON PL501.



E2 PLUMBING EQUIPMENT PLAN - 1ST FLOOR
1/8" = 1'-0"
TRUE PLAN



E5 PLUMBING PLAN - UNDERGROUND
1/8" = 1'-0"
TRUE PLAN



1 Addendum 1	08-09-2024
3 Addendum 3	01-17-2025
Revisions:	Date:

CONSULTANT
BURNS MCDONNELL
Burns & McDonnell Engineering Company, Inc.
9450 WARD PARKWAY, KANSAS CITY, MO

ARCHITECT/ENGINEER OF RECORD
paradigm
Architecture | Engineering | Design-Build
200 Envoy Circle, Suite 201, Louisville, KY 40299
www.paradigmusa.com

STAMP
Office of Construction and Facilities Management
U.S. Department of Veterans Affairs

Drawing Title
PLUMBING PLANS
Approved: Project Director

Phase
100% CONSTRUCTION DOCUMENTS
FULLY SPRINKLERED

Project Title
SIOUX FALLS BOILER PLANT
Location
VAMC-Sioux Falls: 2501 W 22nd St, Sioux Falls, SD 57105
Issue Date
06/25/2024
Checked
S. FISCHBACH
Drawn
J. YOUNG

Project Number
438-22-900
Building Number
12
Drawing Number
PL101

