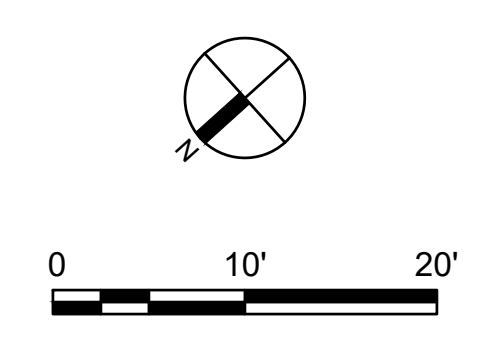


LEGEND

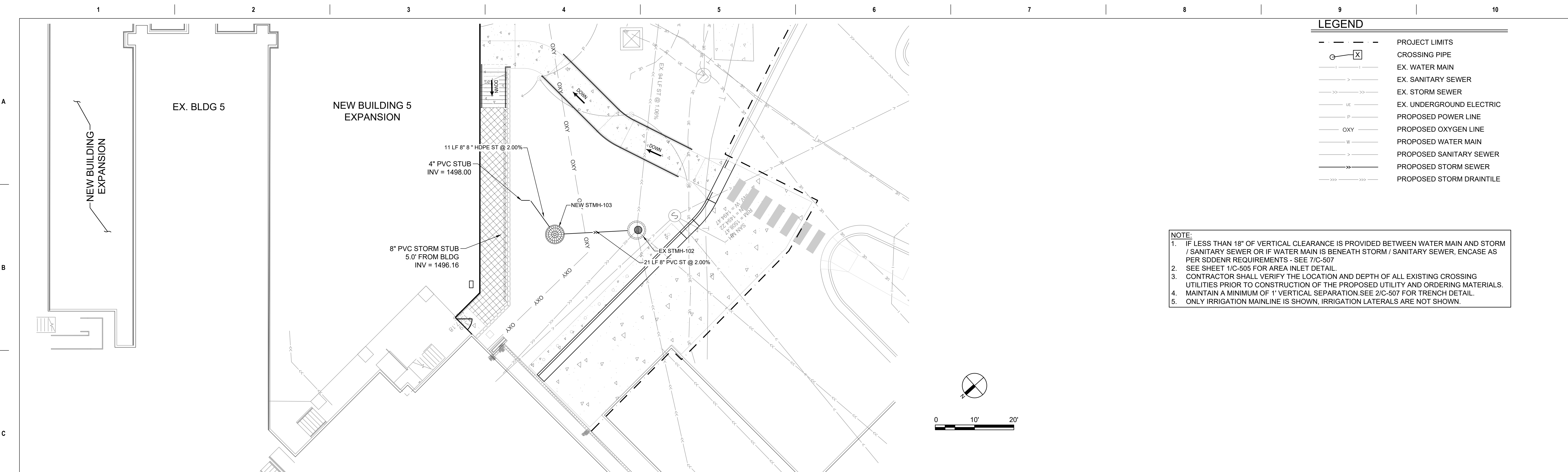
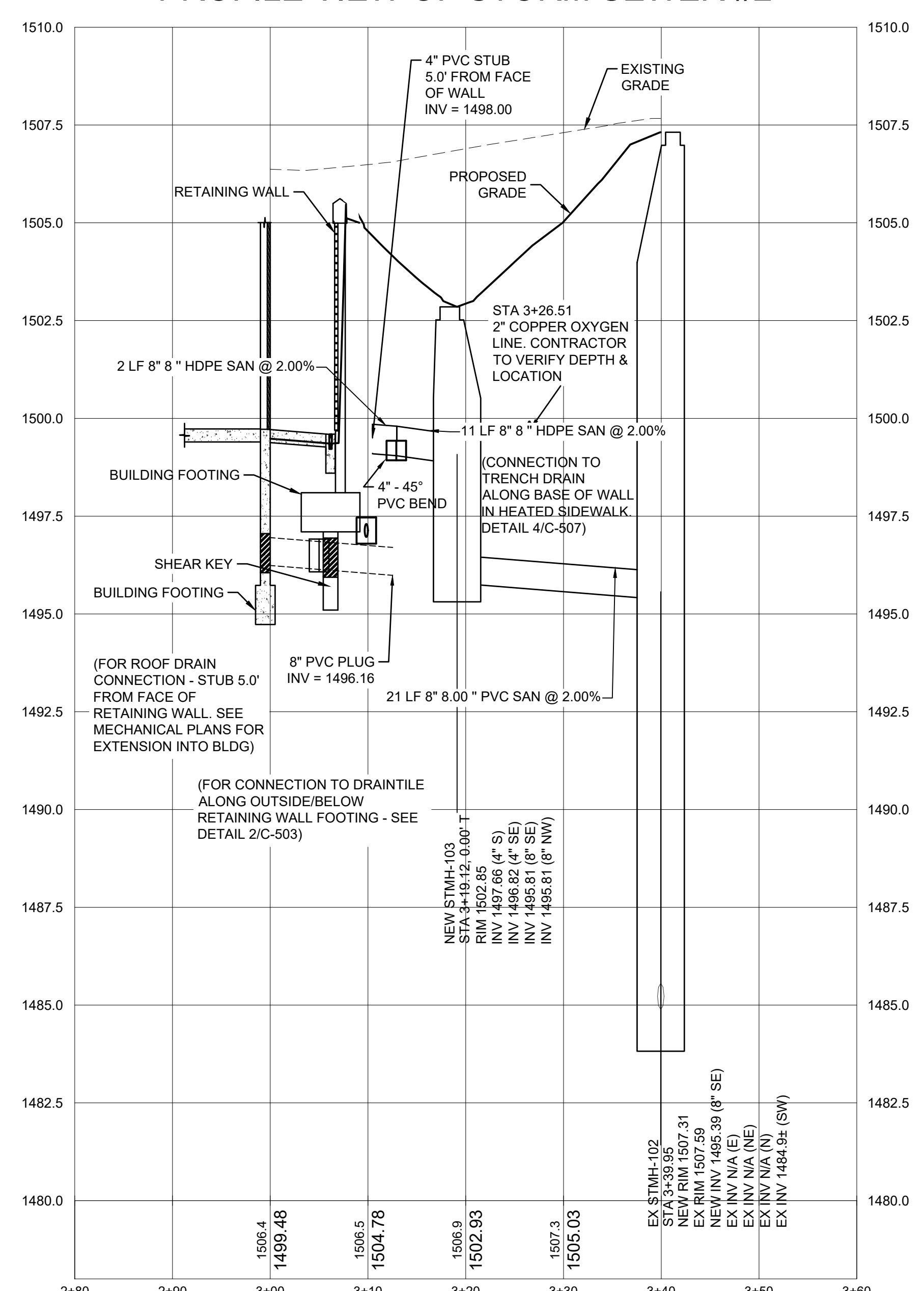
- PROJECT LIMITS
- X --- CROSSING PIPE
- EX. WATER MAIN
- EX. SANITARY SEWER
- EX. STORM SEWER
- UE --- EX. UNDERGROUND ELECTRIC
- P --- PROPOSED POWER LINE
- OXY --- PROPOSED OXYGEN LINE
- W --- PROPOSED WATER MAIN
- S --- PROPOSED SANITARY SEWER
- ST --- PROPOSED STORM SEWER
- SD --- PROPOSED STORM DRAINTILE

NOTE:

1. IF LESS THAN 18" OF VERTICAL CLEARANCE IS PROVIDED BETWEEN WATER MAIN AND STORM / SANITARY SEWER OR IF WATER MAIN IS BENEATH STORM / SANITARY SEWER, ENCASE AS PER SDDENR REQUIREMENTS - SEE 7/C-507
2. SEE SHEET 1/C-505 FOR AREA INLET DETAIL.
3. CONTRACTOR SHALL VERIFY THE LOCATION AND DEPTH OF ALL EXISTING CROSSING UTILITIES PRIOR TO CONSTRUCTION OF THE PROPOSED UTILITY AND ORDERING MATERIALS.
4. MAINTAIN A MINIMUM OF 1" VERTICAL SEPARATION. SEE 2/C-507 FOR TRENCH DETAIL.
5. ONLY IRRIGATION MAINLINE IS SHOWN, IRRIGATION LATERALS ARE NOT SHOWN.



PROFILE VIEW OF STORM SEWER #2



File Path: Y:\050010504 - construct new sps - cpl_07.cad file: 01 sheet110584-c-ufp.dwg | edited: 02/14/2025 12:10 PM
 saved: 02/14/2025 11:48 AM | plot: 02/14/2025 12:10 PM
 VA FORM 08 - 6231

Revisions:	Date:

CONSULTANTS

ARCHITECT/ENGINEER OF RECORD

13605 1st Ave. N. #100 Plymouth, MN 55441
 P 763.412.4000 | F 763.412.4090 | e-mn.com
 Anderson Engineering of Minnesota, LLC | Proj # 16584

STAMP

I HEREBY CERTIFY THAT THIS PLAN, SPECIFICATION, OR REPORT, WAS PREPARED BY ME OR UNDER MY DIRECT SUPERVISION, AND THAT I AM A DULY LICENSED PROFESSIONAL ENGINEER UNDER THE LAWS OF THE STATE OF MINNESOTA

Office of Construction and Facilities Management

Drawing Title

STORM SEWER PLAN AND PROFILE

Approved: Project Director

SIOUX FALLS VA HEALTH CARE SYSTEM

Phase

BID DOCUMENTS

FULLY SPRINKLERED

Project Title

CONSTRUCT NEW SPS

Location

SIOUX FALLS, SOUTH DAKOTA

Issue Date

02/14/2025

Checked

EB

Drawn

AB

Project Number

438-460

Building Number

5

Drawing Number

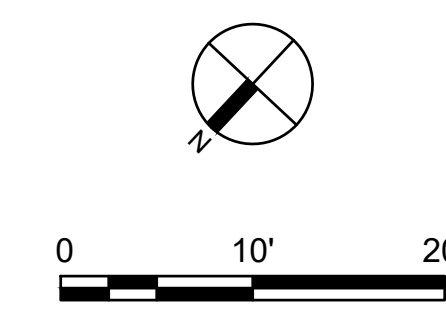
CU105

LEGEND

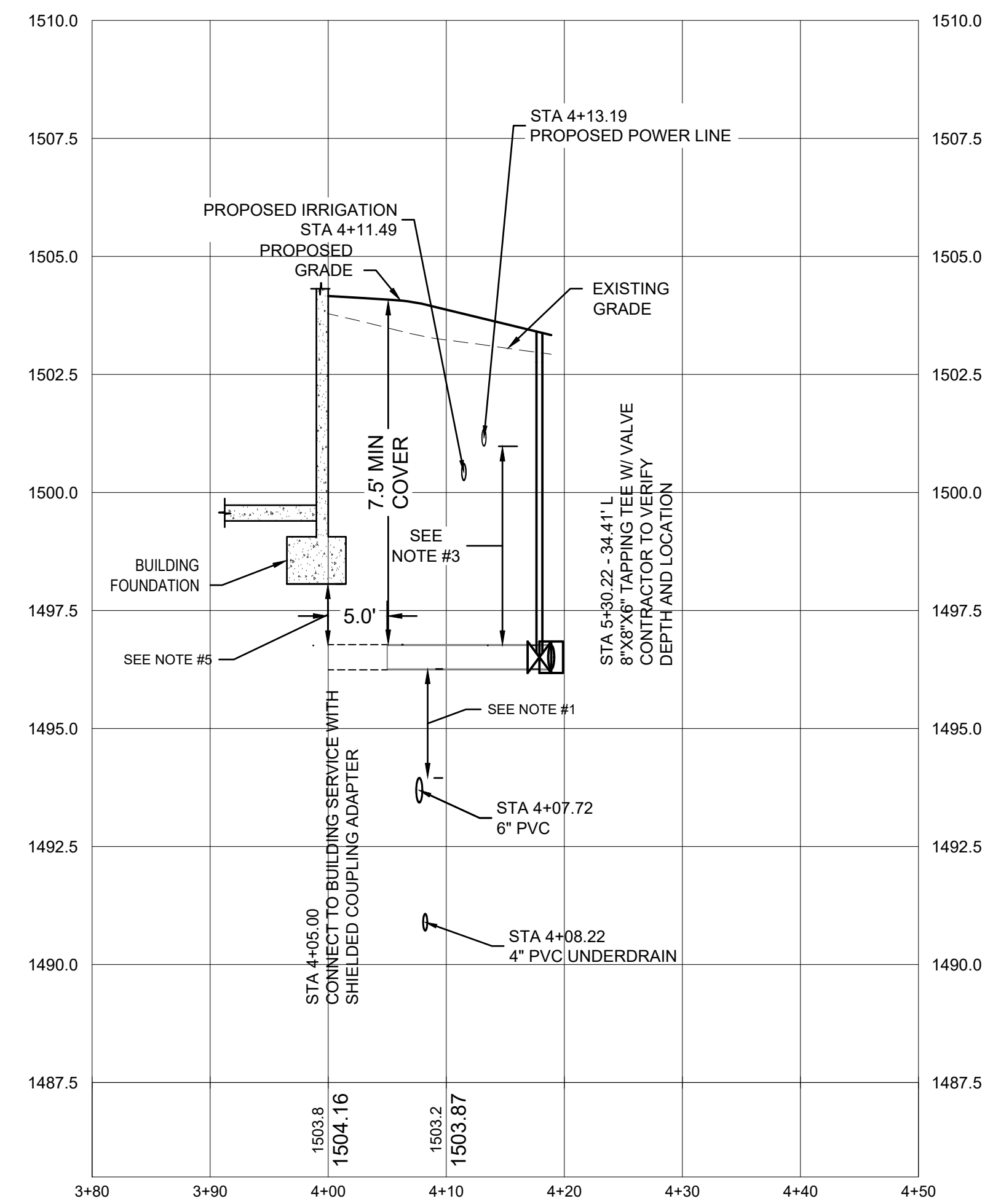
- PROJECT LIMITS
- ⊗ CROSSING PIPE
- EX. WATER MAIN
- - - EX. SANITARY SEWER
- - - EX. STORM SEWER
- UE — EX. UNDERGROUND ELECTRIC
- P — PROPOSED POWER LINE
- OXY — PROPOSED OXYGEN LINE
- W — PROPOSED WATER MAIN
- - - PROPOSED SANITARY SEWER
- - - PROPOSED STORM SEWER
- - - PROPOSED STORM DRAINTILE

NOTE:

1. IF LESS THAN 18" OF VERTICAL CLEARANCE IS PROVIDED BETWEEN WATER MAIN AND STORM / SANITARY SEWER OR IF WATER MAIN IS BENEATH STORM / SANITARY SEWER, ENCASE AS PER SDDENR REQUIREMENTS - SEE 7/C-507
2. CONTRACTOR SHALL VERIFY THE LOCATION AND DEPTH OF ALL EXISTING CROSSING UTILITIES PRIOR TO CONSTRUCTION OF THE PROPOSED UTILITY AND ORDERING MATERIALS
3. MAINTAIN A MINIMUM OF 1' VERTICAL SEPARATION. WATER SERVICE MUST BE LAID FLAT TO ENSURE VALVE AND VALVE BOX ARE VERTICAL - COORDINATE ELEVATION OF CONNECTION WITH MECHANICAL CONTRACTOR.
4. SEE 2/C-507 FOR TRENCH DETAIL.
5. ENCASE WATER MAIN IN 6" OF FLOWABLE FILL FOR 3' EACH SIDE OF FOOTING IF SEPARATION IS < 1'.
6. ONLY IRRIGATION MAINLINE IS SHOWN, IRRIGATION LATERALS ARE NOT SHOWN.



PROFILE VIEW OF WATER LINE #1



File Path: Y:\050010584-va-sioux-falls-construct-new-sps-cps_07_civil_01_cad_files_01_sheets\10584-c-utility.dwg | saved: 2/14/2025 11:48 AM | plot: 2/14/2025 12:10 PM
 User: edibrommarkle | e-mail: edibrommarkle

Revisions:	Date:

CONSULTANTS

ARCHITECT/ENGINEER OF RECORD

13605 1st Ave. N. #100 Plymouth, MN 55441
 P 763.412.4000 | F 763.412.4090 | e-mail: ae-mn.com
 Anderson Engineering of Minnesota, LLC | Proj # 16584

STAMP

I HEREBY CERTIFY THAT THIS PLAN, SPECIFICATION, OR REPORT, WAS PREPARED BY ME OR UNDER MY DIRECT SUPERVISION, AND THAT I AM A DULY LICENSED PROFESSIONAL ENGINEER UNDER THE LAWS OF THE STATE OF MINNESOTA

Office of Construction and Facilities Management

Drawing Title

WATER LINE PLAN AND PROFILE

Approved: Project Director

SIoux FALLS VA HEALTH CARE SYSTEM

Phase

BID DOCUMENTS

FULLY SPRINKLERED

Project Title

CONSTRUCT NEW SPS

Location

SIoux FALLS, SOUTH DAKOTA

Issue Date

02/14/2025

Checked

EB

Drawn

AB

Project Number

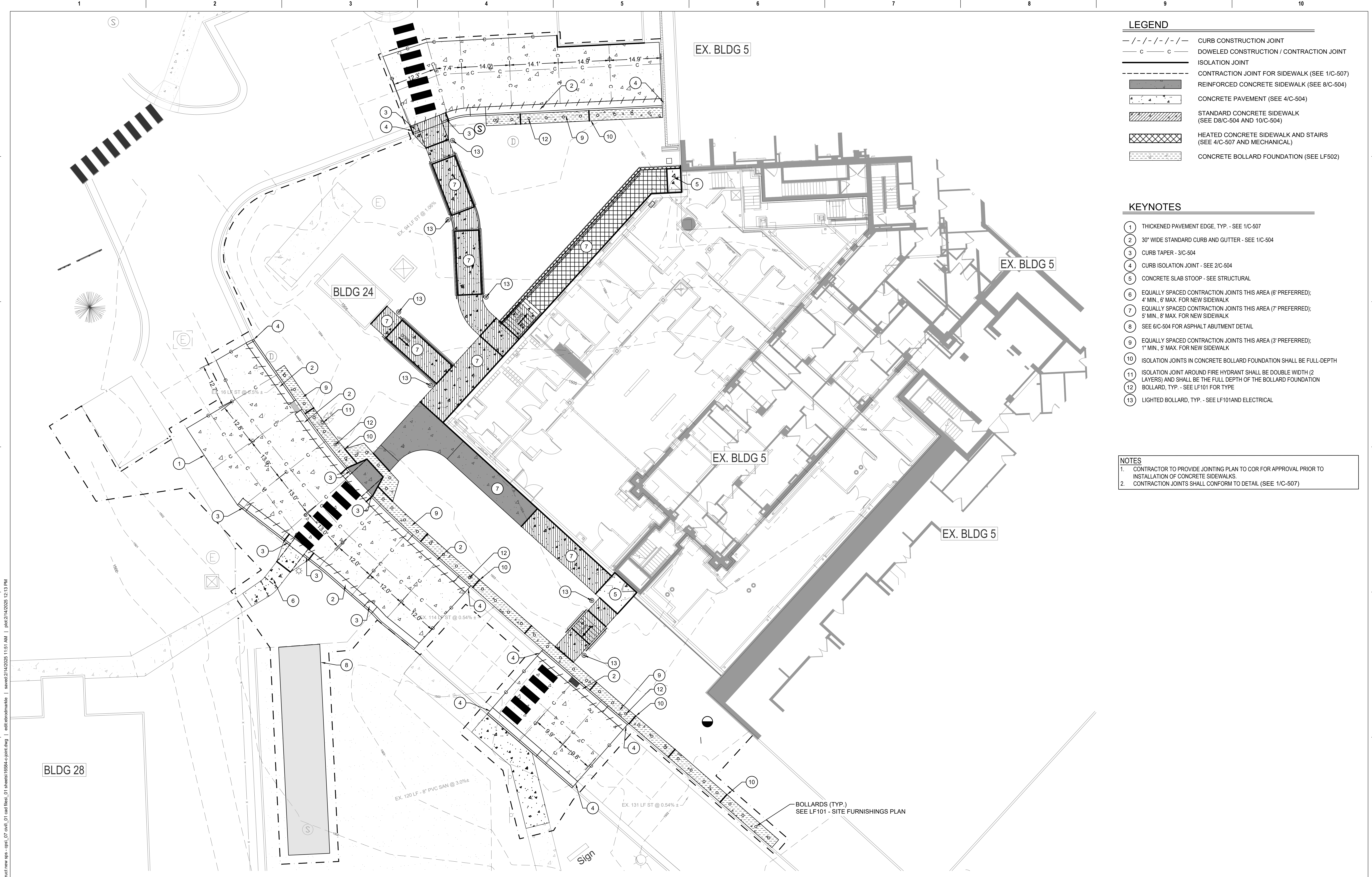
438-460

Building Number

5

Drawing Number

CU106



LEGEND

	CURB CONSTRUCTION JOINT
	DOWELED CONSTRUCTION / CONTRACTION JOINT
	ISOLATION JOINT
	CONTRACTION JOINT FOR SIDEWALK (SEE 1/C-507)
	REINFORCED CONCRETE SIDEWALK (SEE 8/C-504)
	CONCRETE PAVEMENT (SEE 4/C-504)
	STANDARD CONCRETE SIDEWALK (SEE D8/C-504 AND 10/C-504)
	HEATED CONCRETE SIDEWALK AND STAIRS (SEE 4/C-507 AND MECHANICAL)
	CONCRETE BOLLARD FOUNDATION (SEE LF502)

- KEYNOTES**
- THICKENED PAVEMENT EDGE, TYP. - SEE 1/C-507
 - 30' WIDE STANDARD CURB AND GUTTER - SEE 1/C-504
 - CURB TAPER - 3/C-504
 - CURB ISOLATION JOINT - SEE 2/C-504
 - CONCRETE SLAB STOOP - SEE STRUCTURAL
 - EQUALLY SPACED CONTRACTION JOINTS THIS AREA (6' PREFERRED); 4' MIN., 6' MAX. FOR NEW SIDEWALK
 - EQUALLY SPACED CONTRACTION JOINTS THIS AREA (7' PREFERRED); 5' MIN., 8' MAX. FOR NEW SIDEWALK
 - SEE 6/C-504 FOR ASPHALT ABUTMENT DETAIL
 - EQUALLY SPACED CONTRACTION JOINTS THIS AREA (3' PREFERRED); 1' MIN., 5' MAX. FOR NEW SIDEWALK
 - ISOLATION JOINTS IN CONCRETE BOLLARD FOUNDATION SHALL BE FULL-DEPTH
 - ISOLATION JOINT AROUND FIRE HYDRANT SHALL BE DOUBLE WIDTH (2 LAYERS) AND SHALL BE THE FULL DEPTH OF THE BOLLARD FOUNDATION
 - BOLLARD, TYP. - SEE LF101 FOR TYPE
 - LIGHTED BOLLARD, TYP. - SEE LF101 AND ELECTRICAL

- NOTES**
- CONTRACTOR TO PROVIDE JOINTING PLAN TO COR FOR APPROVAL PRIOR TO INSTALLATION OF CONCRETE SIDEWALKS.
 - CONTRACTION JOINTS SHALL CONFORM TO DETAIL (SEE 1/C-507)

File Path: Y:\050010584-va-siooux-falls-construct-new-sps-cps-07-civil-01-civil.dwg | User: jh1551 | Date: 02/14/2025 12:13 PM
 File Name: Y:\050010584-va-siooux-falls-construct-new-sps-cps-07-civil-01-civil.dwg | User: jh1551 | Date: 02/14/2025 12:13 PM
 File Path: Y:\050010584-va-siooux-falls-construct-new-sps-cps-07-civil-01-civil.dwg | User: jh1551 | Date: 02/14/2025 12:13 PM
 File Name: Y:\050010584-va-siooux-falls-construct-new-sps-cps-07-civil-01-civil.dwg | User: jh1551 | Date: 02/14/2025 12:13 PM

Revisions:	Date:

CONSULTANTS

ARCHITECT/ENGINEER OF RECORD

13605 1st Ave. N. #100 Plymouth, MN 55441
 P 763.412.4000 | F 763.412.4090 | a-e-mn.com
 Anderson Engineering of Minnesota, LLC | Proj # 16584

STAMP

I HEREBY CERTIFY THAT THIS PLAN, SPECIFICATION, OR REPORT, WAS PREPARED BY ME OR UNDER MY DIRECT SUPERVISION, AND THAT I AM A DULY LICENSED PROFESSIONAL ENGINEER UNDER THE LAWS OF THE STATE OF MINNESOTA

Office of Construction and Facilities Management

Drawing Title

PAVING & JOINT LAYOUT PLAN

Approved: Project Director

SIOUX FALLS VA HEALTH CARE SYSTEM

Phase

BID DOCUMENTS

FULLY SPRINKLERED

Project Title

CONSTRUCT NEW SPS

Location

SIOUX FALLS, SOUTH DAKOTA

Issue Date

02/14/2025

Checked

EB

Drawn

AB

Project Number

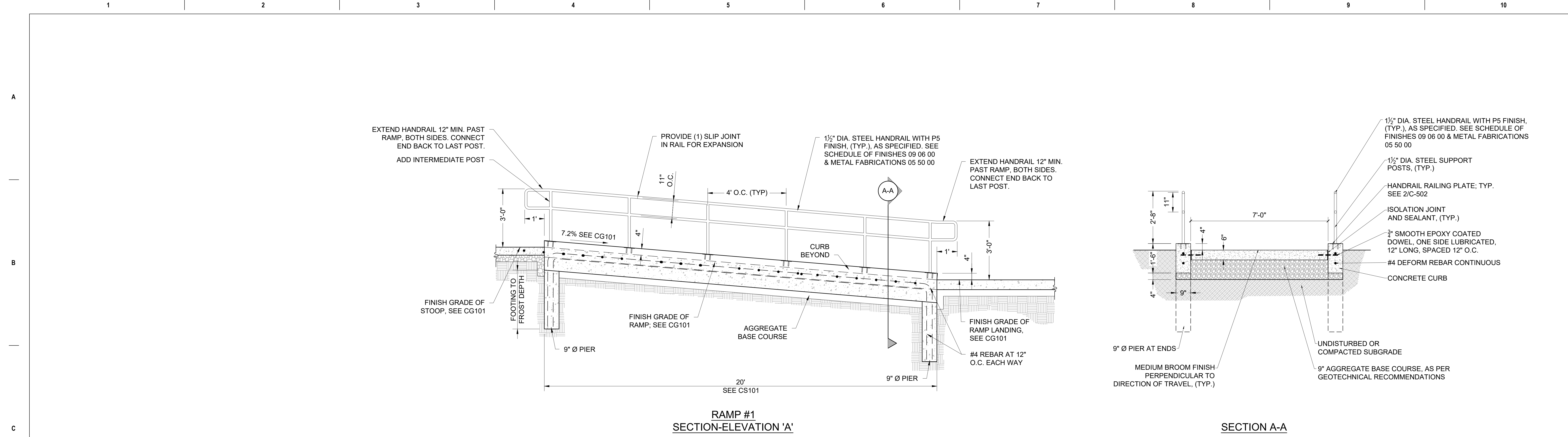
438-460

Building Number

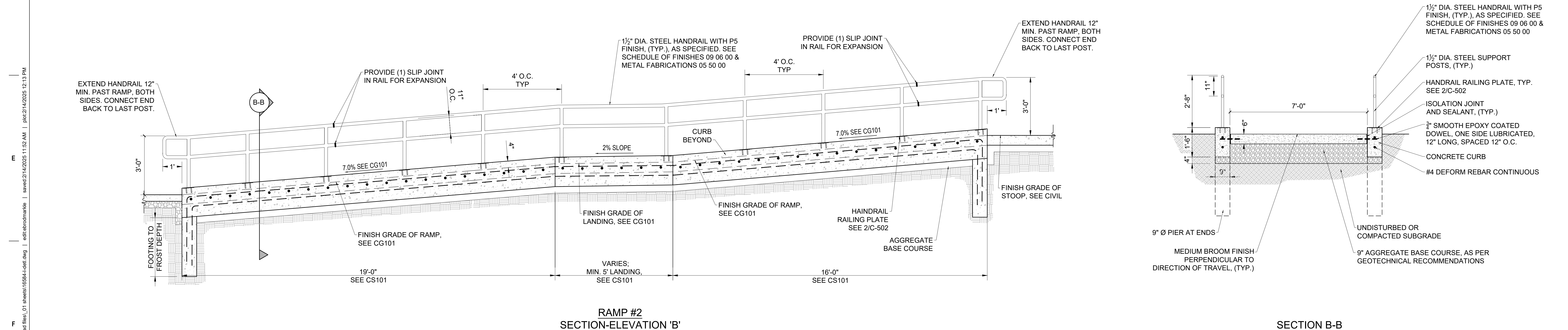
5

Drawing Number

CP101



1 RAMP #1 DETAIL
SCALE: 1/2" = 1'-0" (30" x 42" PAPER SIZE)



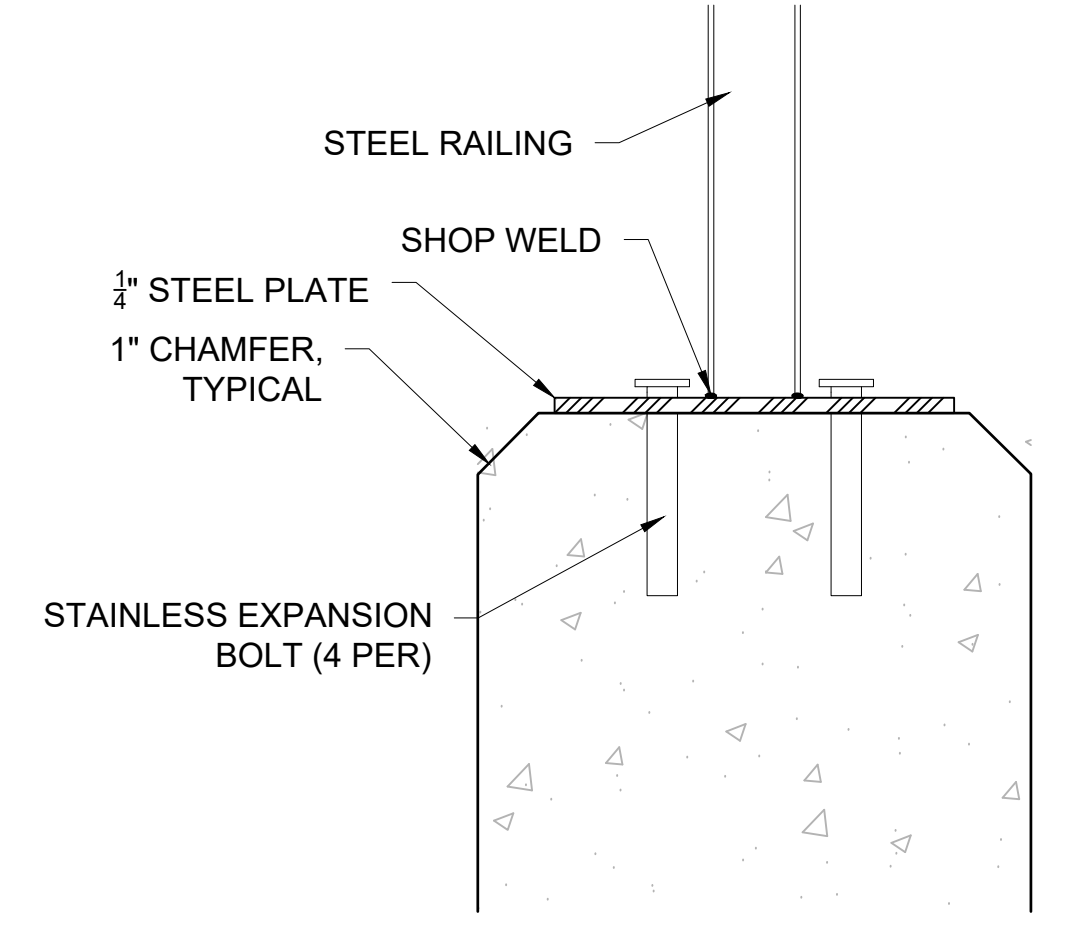
2 RAMP #2 DETAIL
SCALE: 1/2" = 1'-0" (30" x 42" PAPER SIZE)

File Path: Y:\050010504 - va sioux falls - construct new sps - cps_06_01_01 cad files_01 sheets\0504-drf.dwg | saved: 2/14/2025 11:52 AM | plot: 2/14/2025 12:13 PM
 User: ead@brodmarek.com | saved: 2/14/2025 11:52 AM | plot: 2/14/2025 12:13 PM
 User: ead@brodmarek.com | saved: 2/14/2025 11:52 AM | plot: 2/14/2025 12:13 PM

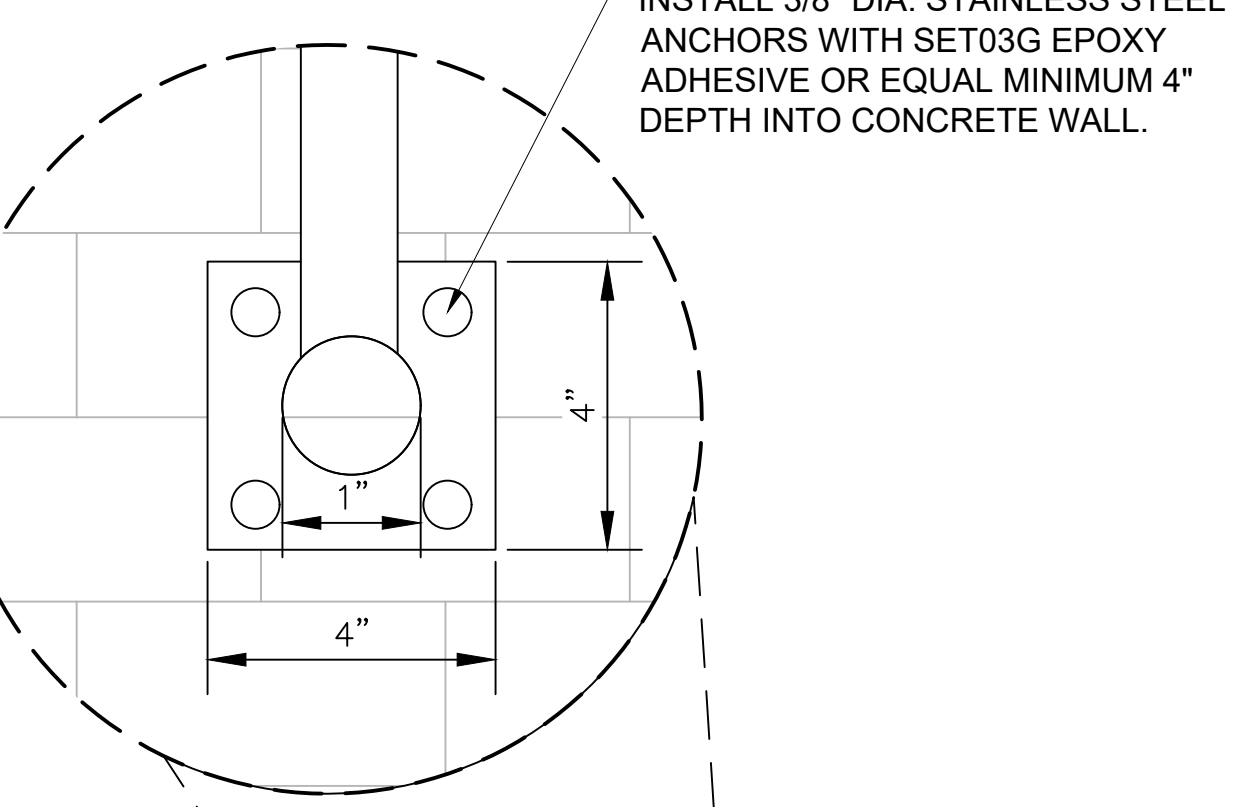
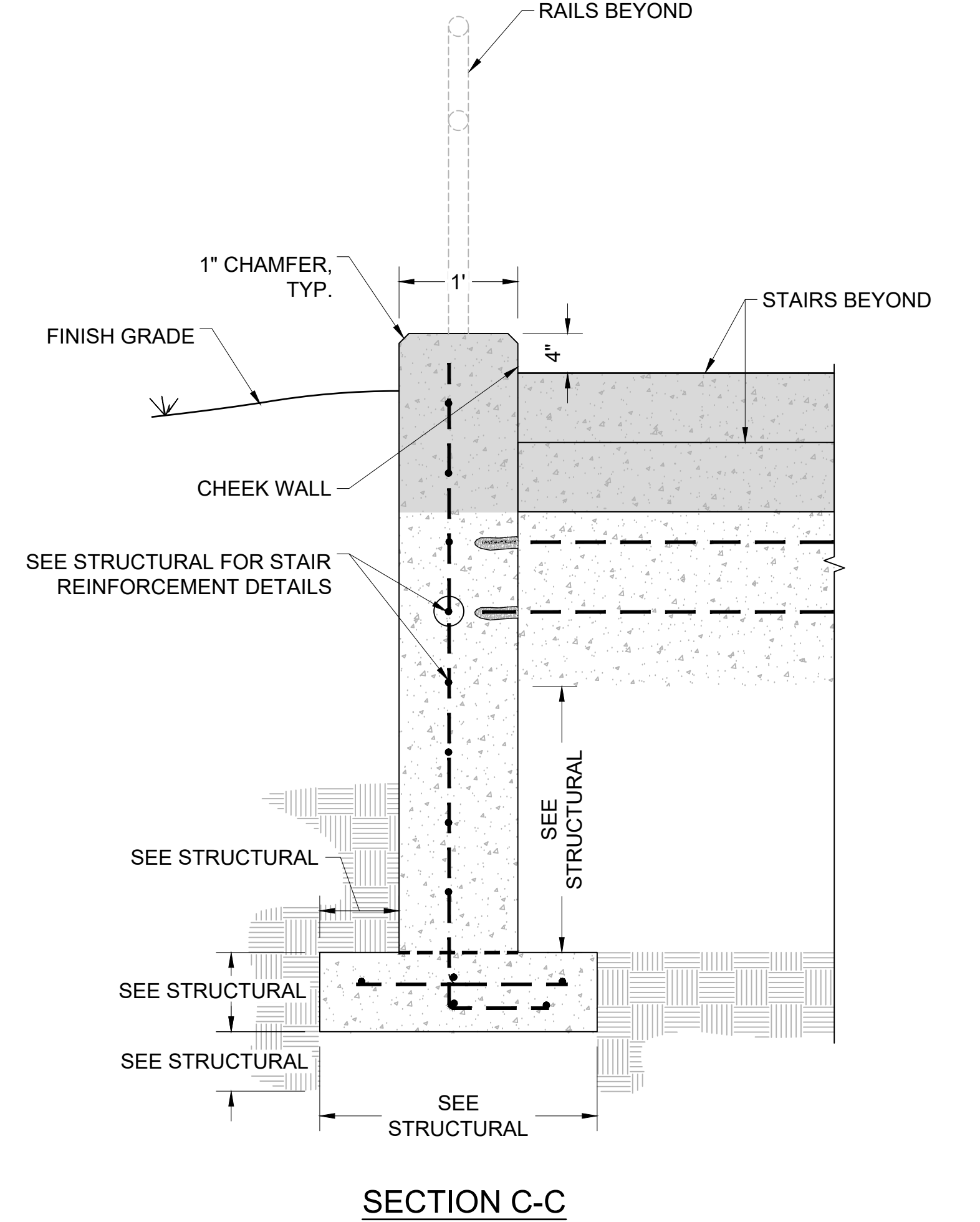
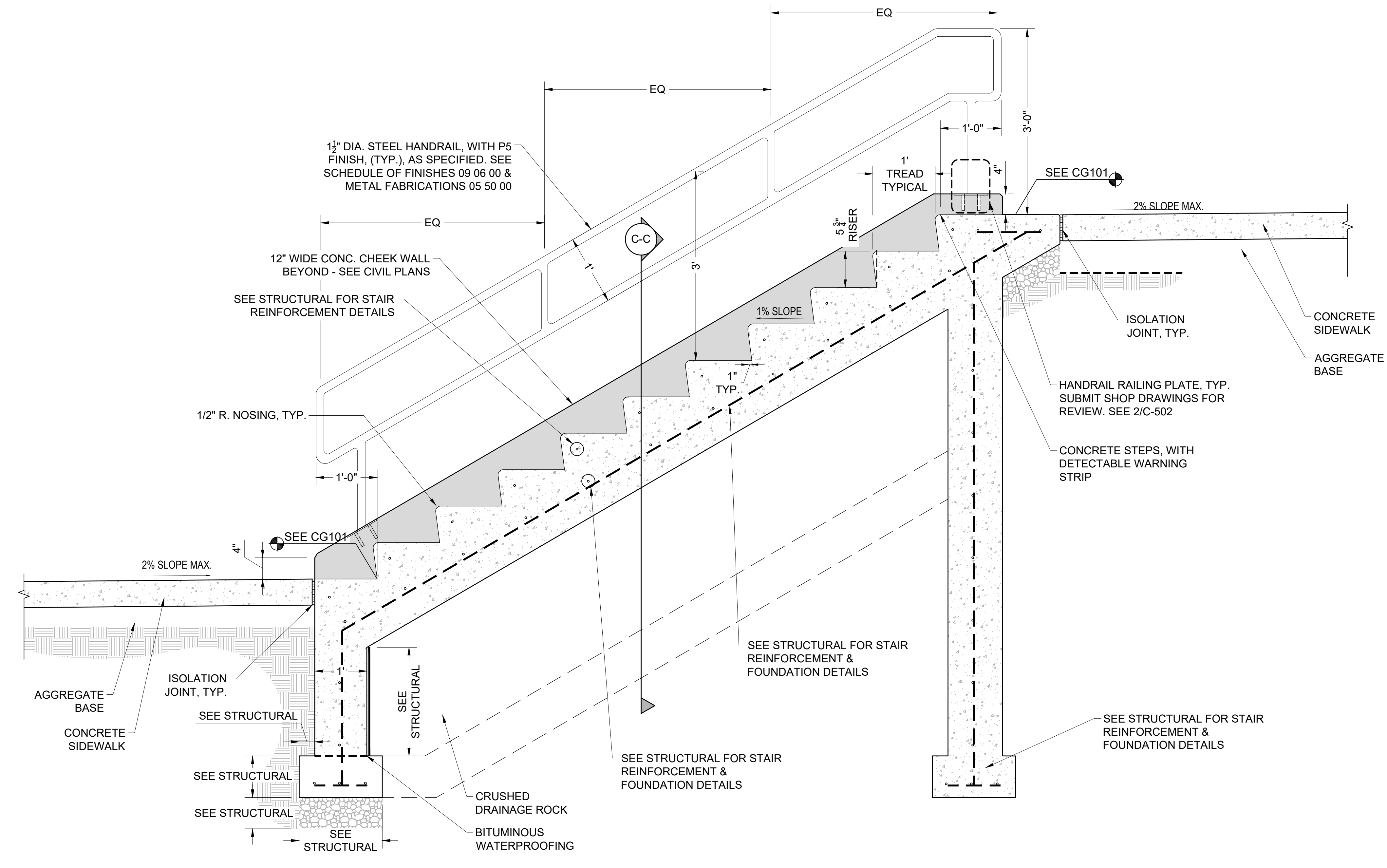
Revisions: 1 2 3 4 5 6 7 8 9 10	CONSULTANTS 	ARCHITECT/ENGINEER OF RECORD 13605 1st Ave. N. #100 Plymouth, MN 55441 P 763.412.4000 F 763.412.4090 ae-mn.com Anderson Engineering of Minnesota, LLC Proj # 16584	STAMP I HEREBY CERTIFY THAT THIS PLAN, SPECIFICATION, OR REPORT, WAS PREPARED BY ME OR UNDER MY DIRECT SUPERVISION, AND THAT I AM A DULY LICENSED PROFESSIONAL ENGINEER UNDER THE LAWS OF THE STATE OF MINNESOTA EDWIN J. BROADMAREK, PE DATE: 2025.02.14 LICENSE NO: 55409	Office of Construction and Facilities Management U.S. Department of Veterans Affairs	Drawing Title RAMP SITE DETAILS	Phase BID DOCUMENTS	Project Title CONSTRUCT NEW SPS	Project Number 438-460
					Approved: Project Director SIOUX FALLS VA HEALTH CARE SYSTEM	FULLY SPRINKLERED	Location SIOUX FALLS, SOUTH DAKOTA	Building Number 5
Date:					Issue Date 02/14/2025	Checked EB	Drawn AB	Drawing Number C-501

A
B
C
D
E
F
 File Path: Y:\1050010504\va_siofax\falls - construct\new.sps - cpl_06_01.dwg
 User: ead@brodmarkle.com
 Date: 2/14/2025 11:52 AM
 Plot Date: 2/14/2025 12:13 PM
 Plot Size: 36x48
 Plot Scale: 1/8" = 1'-0"
 Plot Orientation: Landscape
 Plot Color: Black
 Plot Lineweight: 0.20
 Plot Linetype: Solid
 Plot Font: Arial, 10
 Plot Title: STAIRS SITE DETAILS
 Plot Author: EDWIN J. BRODMARKLE, PE
 Plot License: 2025.02.14
 Plot License No: 55409

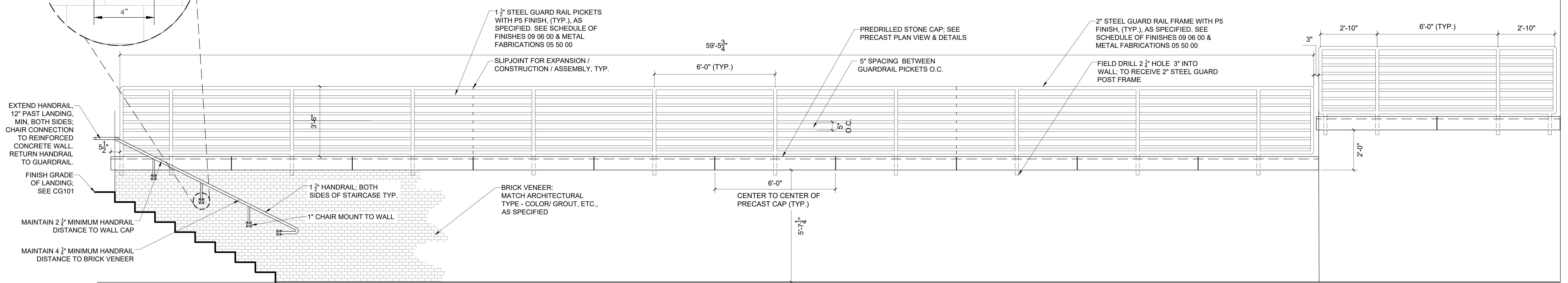
2 ENLARGED RAILING PLATE DETAIL
SCALE: 1" = 3" (30" x 42" PAPER SIZE)



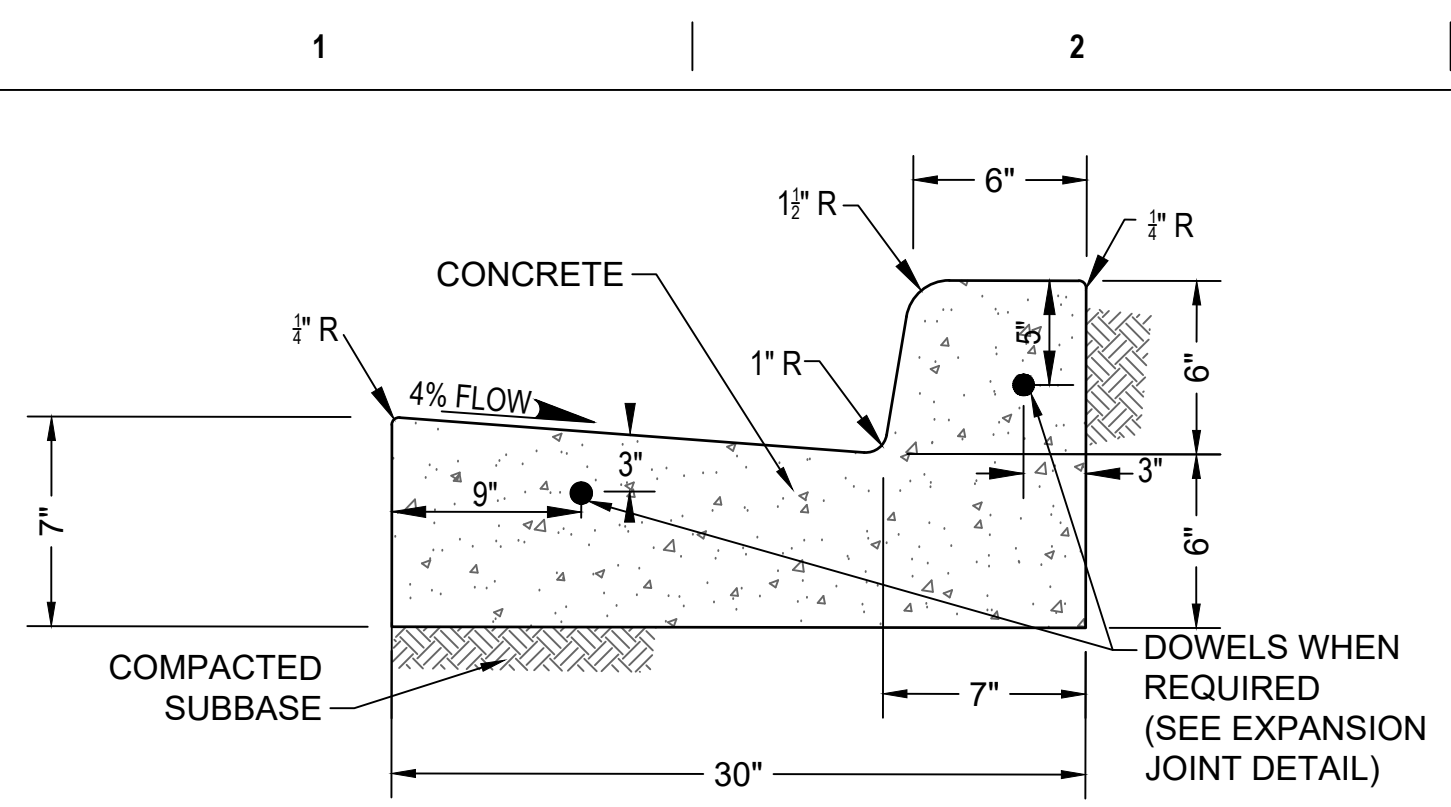
1 CONCRETE STAIR #2 DETAIL
SCALE: 1" = 1'-0" (30" x 42" PAPER SIZE)



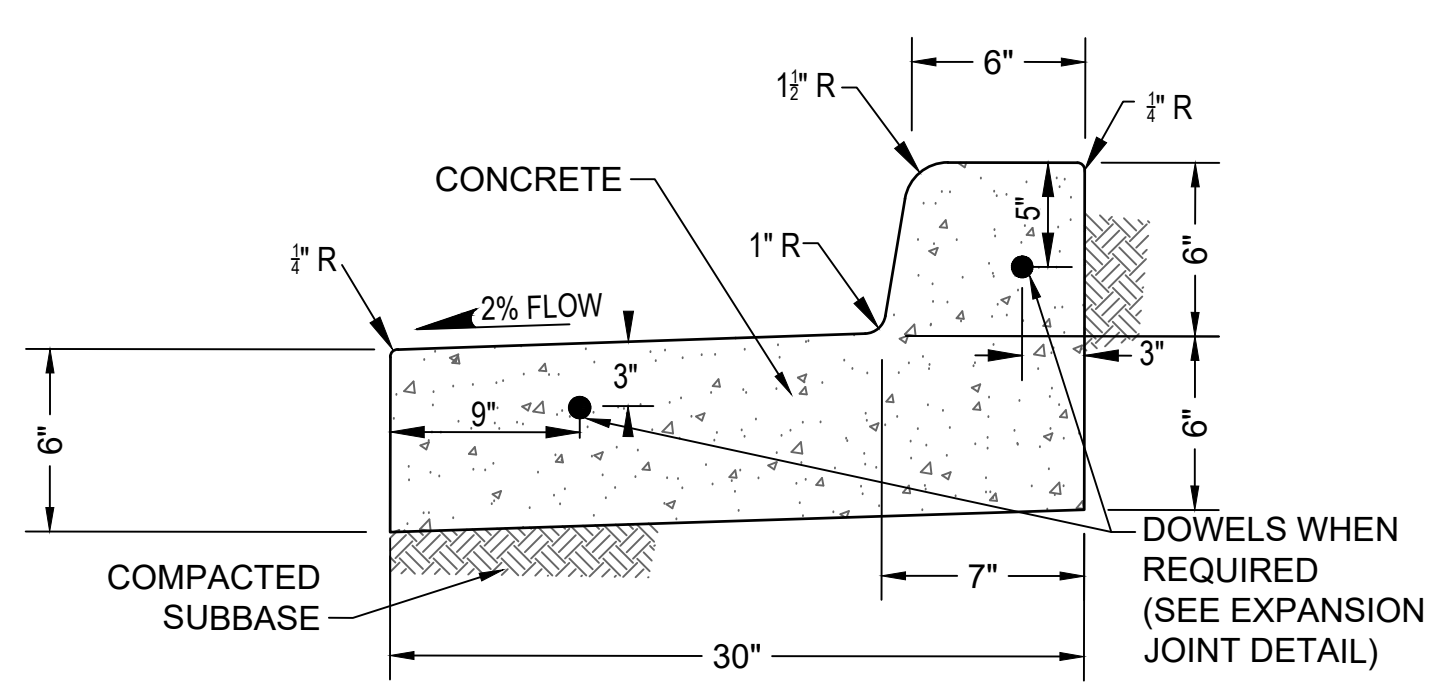
3 CONCRETE STAIR #2 ELEVATION
SCALE: 1" = 1'-0" (30" x 42" PAPER SIZE)



CONSULTANTS 		ARCHITECT/ENGINEER OF RECORD 13605 1st Ave. N. #100 Plymouth, MN 55441 P 763.412.4000 F 763.412.4090 a-e-mn.com Anderson Engineering of Minnesota, LLC Proj # 16584		STAMP I HEREBY CERTIFY THAT THIS PLAN, SPECIFICATION, OR REPORT, WAS PREPARED BY ME OR UNDER MY DIRECT SUPERVISION, AND THAT I AM A DULY LICENSED PROFESSIONAL ENGINEER UNDER THE LAWS OF THE STATE OF MINNESOTA EDWIN J. BRODMARKLE, PE DATE: 2025.02.14 LICENSE NO: 55409		Office of Construction and Facilities Management U.S. Department of Veterans Affairs		Drawing Title STAIRS SITE DETAILS Approved: Project Director SIOUX FALLS VA HEALTH CARE SYSTEM		Phase BID DOCUMENTS FULLY SPRINKLERED		Project Title CONSTRUCT NEW SPS Location SIOUX FALLS, SOUTH DAKOTA Issue Date 02/14/2025 Checked EB Drawn AB		Project Number 438-460 Building Number 5 Drawing Number C-502	
------------------------	--	---	--	---	--	--	--	---	--	---	--	--	--	---	--

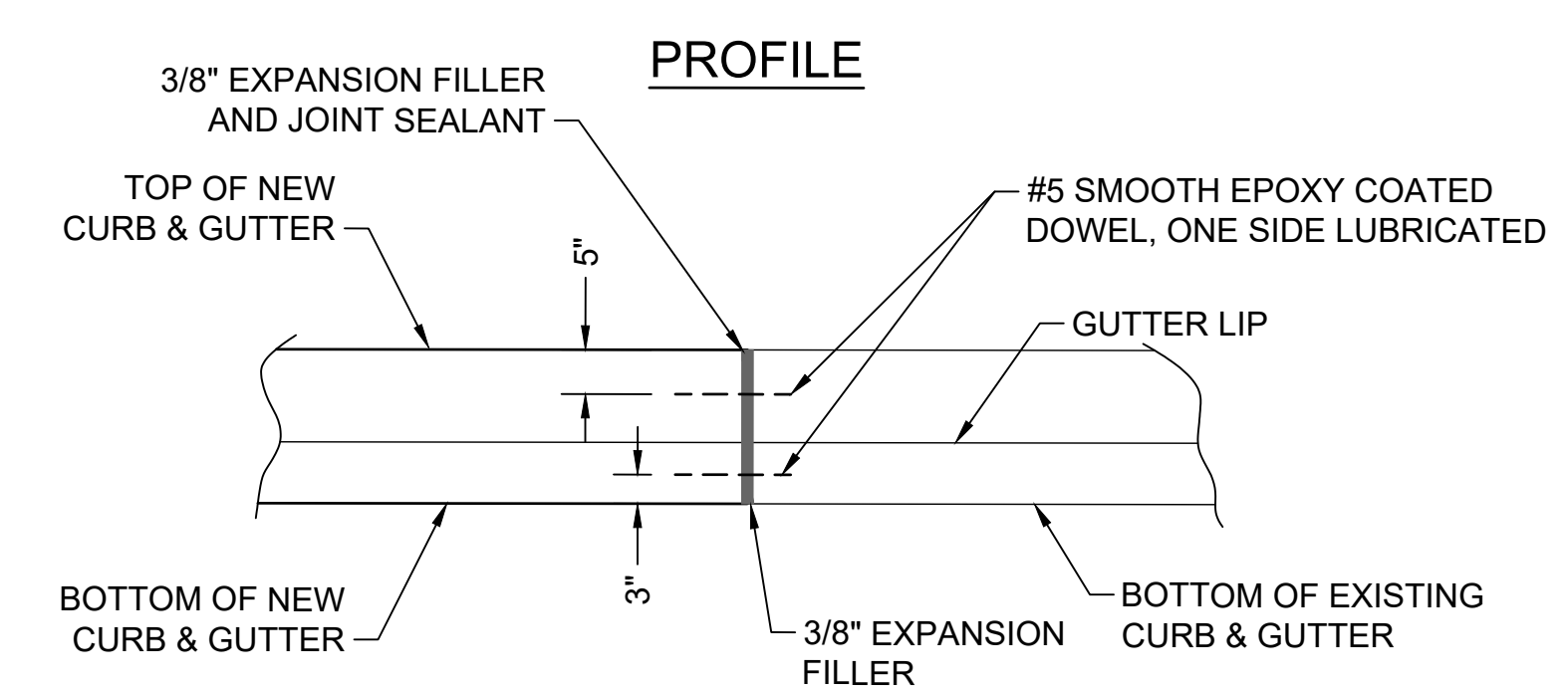
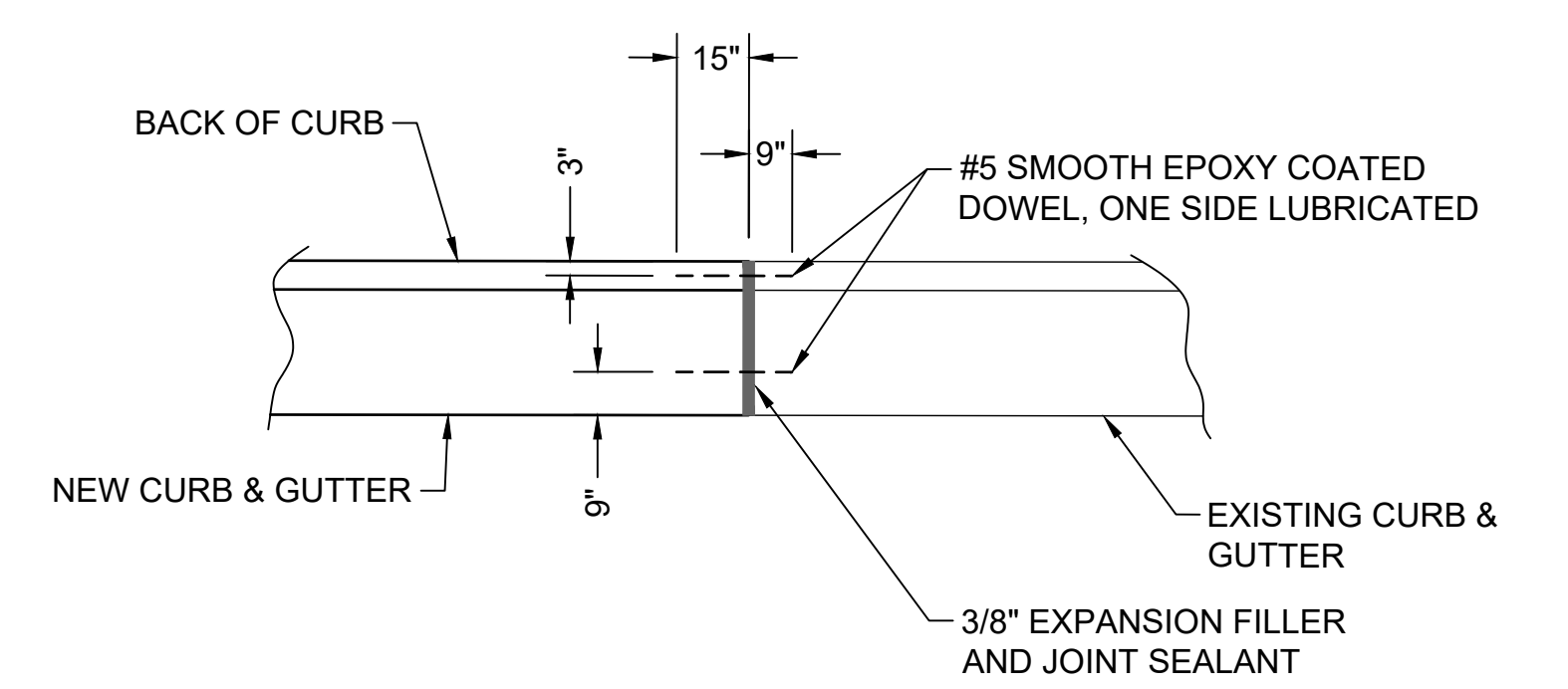


30" WIDE STANDARD CURB AND GUTTER
NTS

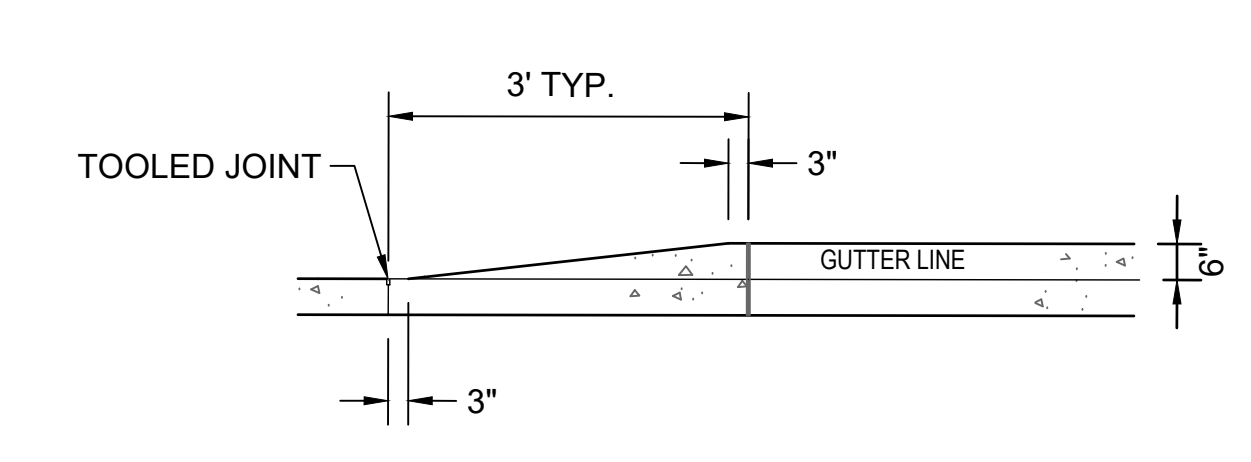


30" WIDE TIP-OUT CURB AND GUTTER
NTS

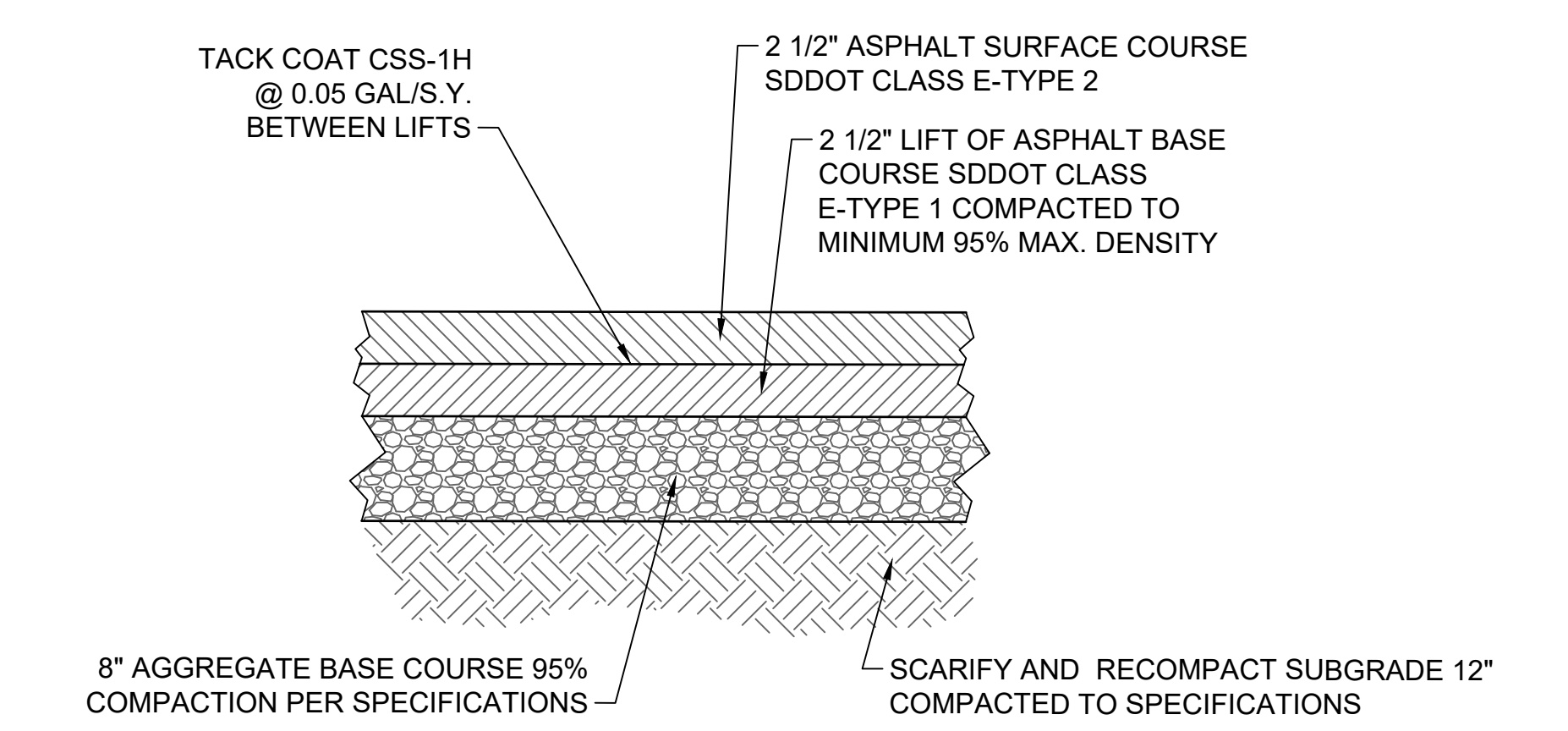
1 30" CURB TYPICAL SECTIONS
SCALE: NTS



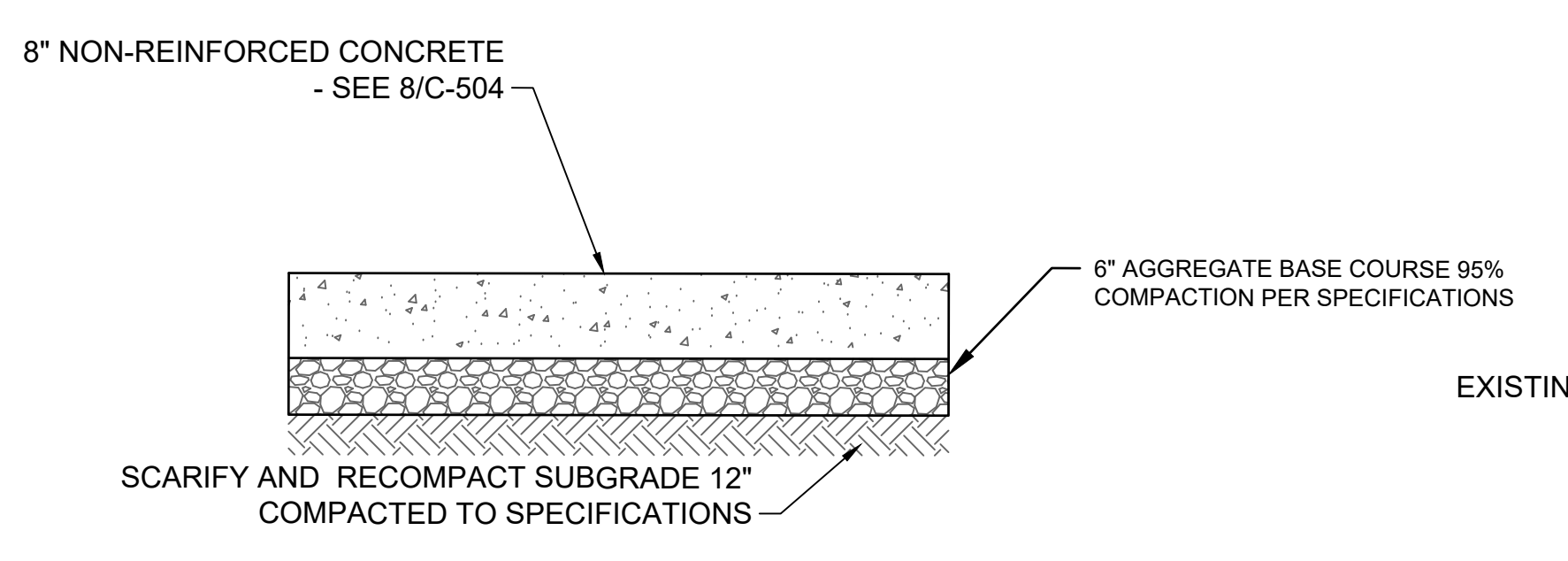
2 CURB AND GUTTER ISOLATION (EXPANSION) JOINT
SCALE: NTS



3 CURB TAPER DETAIL
SCALE: NTS

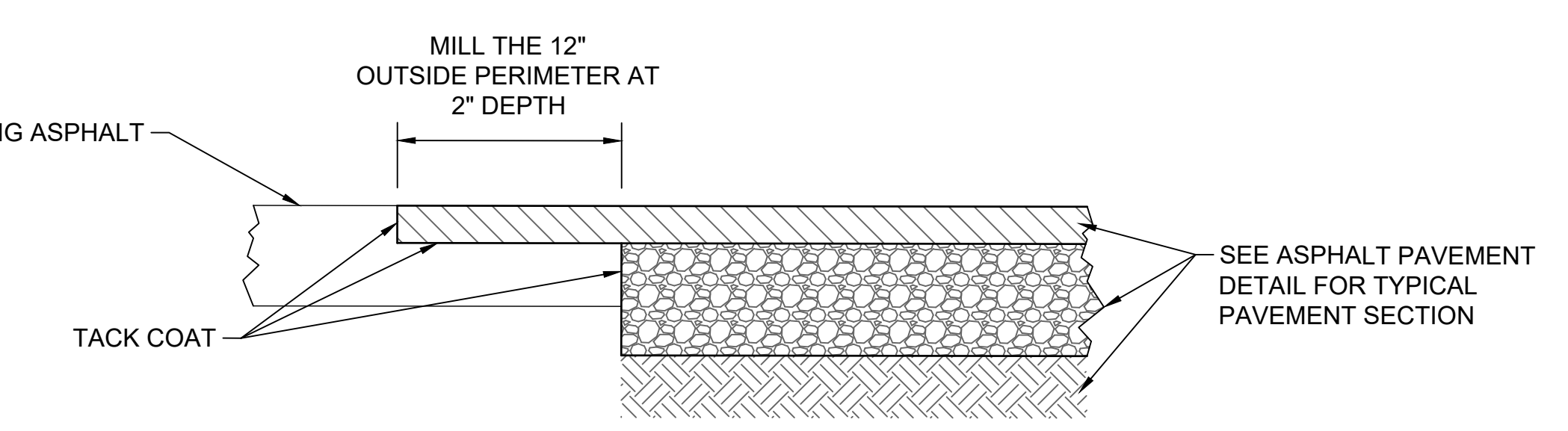


5 ASPHALT PAVEMENT DETAIL
SCALE: NTS

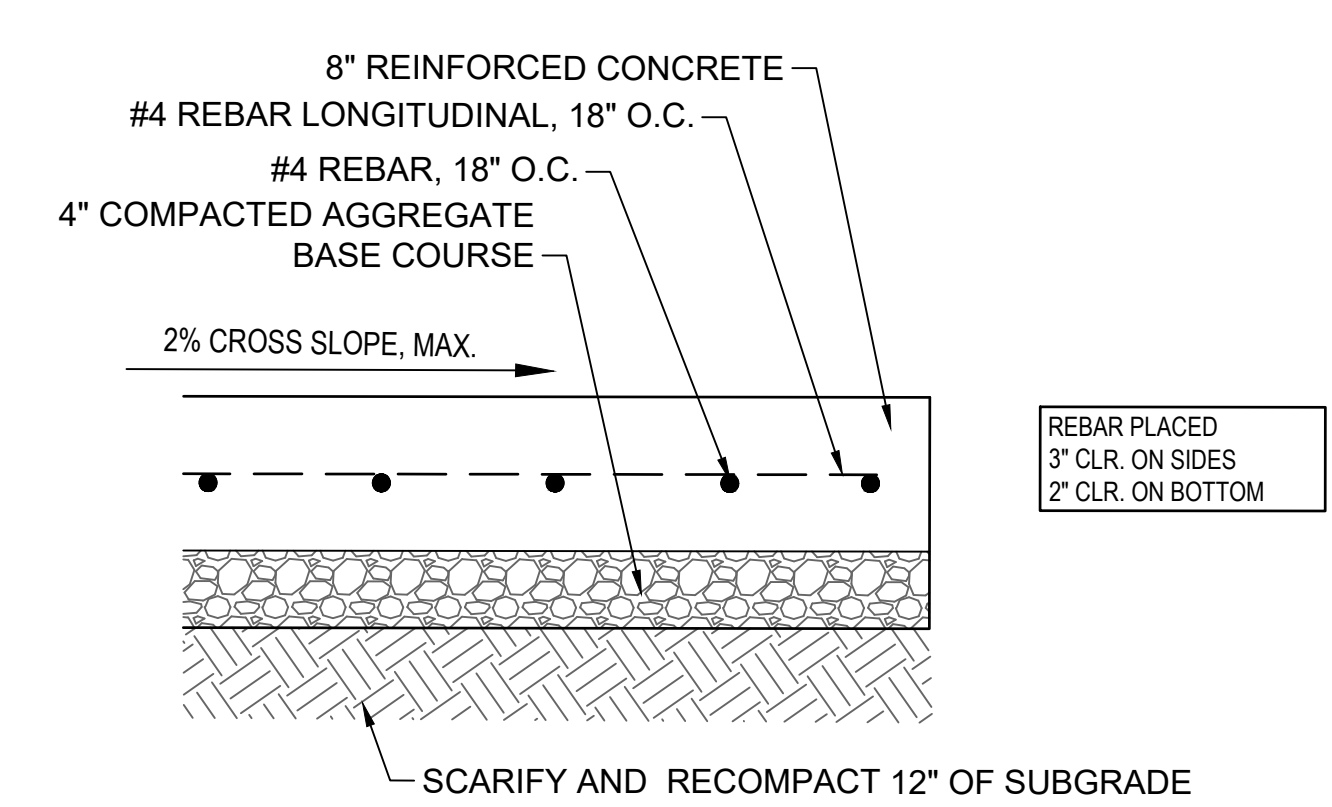


NOTE: IF CONTRACTOR OPTS TO DRIVE OVER BASE COURSE WITH CONSTRUCTION TRAFFIC PRIOR TO PAVEMENT PLACEMENT ADDITIONAL BASE COURSE WILL LIKELY BE NECESSARY. IF RUTTING OCCURS, BASE COURSE SHOULD BE REMOVED, SUBGRADE SHAPED AND COMPACTED AND BASE COURSE REINSTALLED.

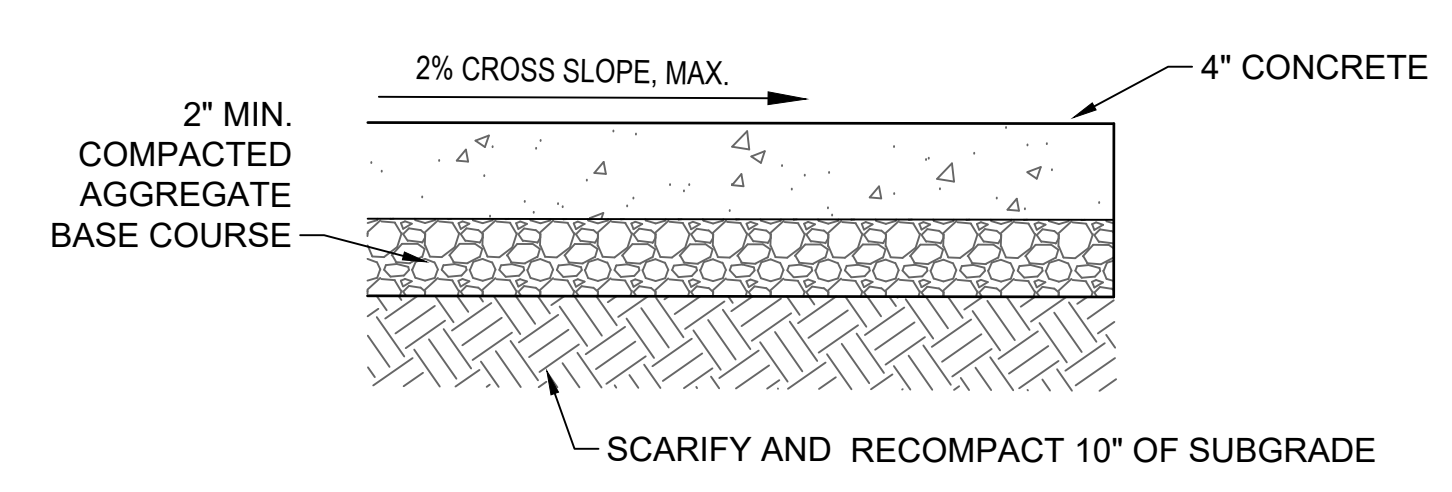
4 CONCRETE PAVEMENT DETAIL
SCALE: NTS



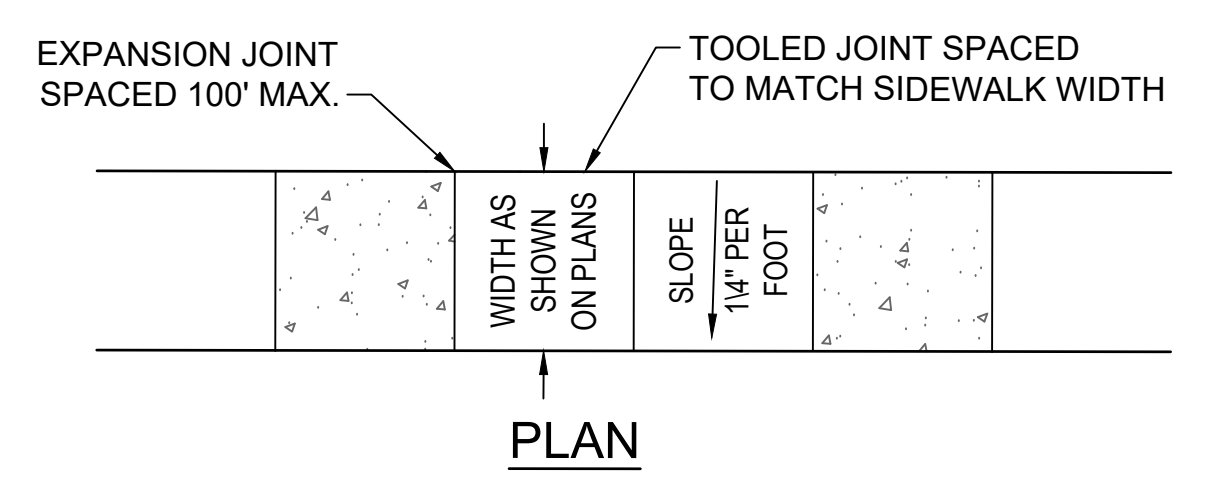
6 ASPHALT ABUTMENT DETAIL
SCALE: NTS



REINFORCED SECTION

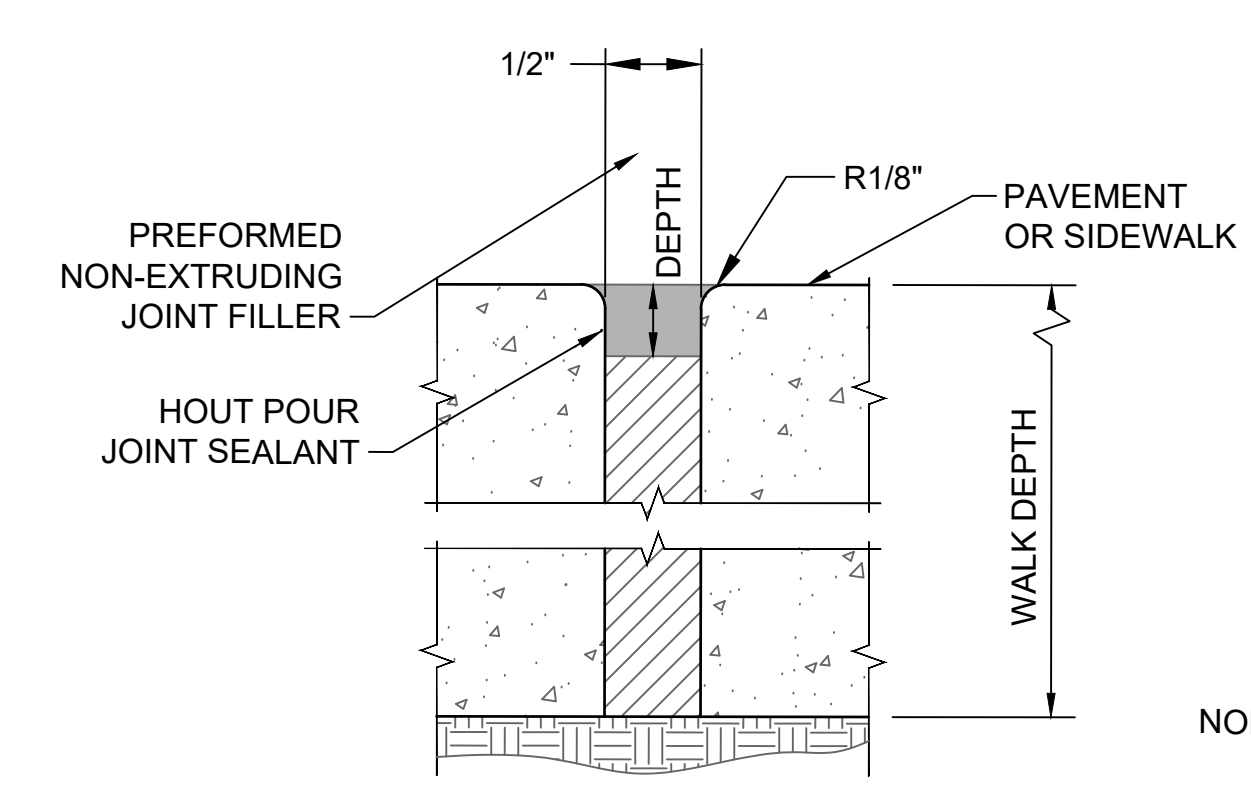


NON-REINFORCED SECTION

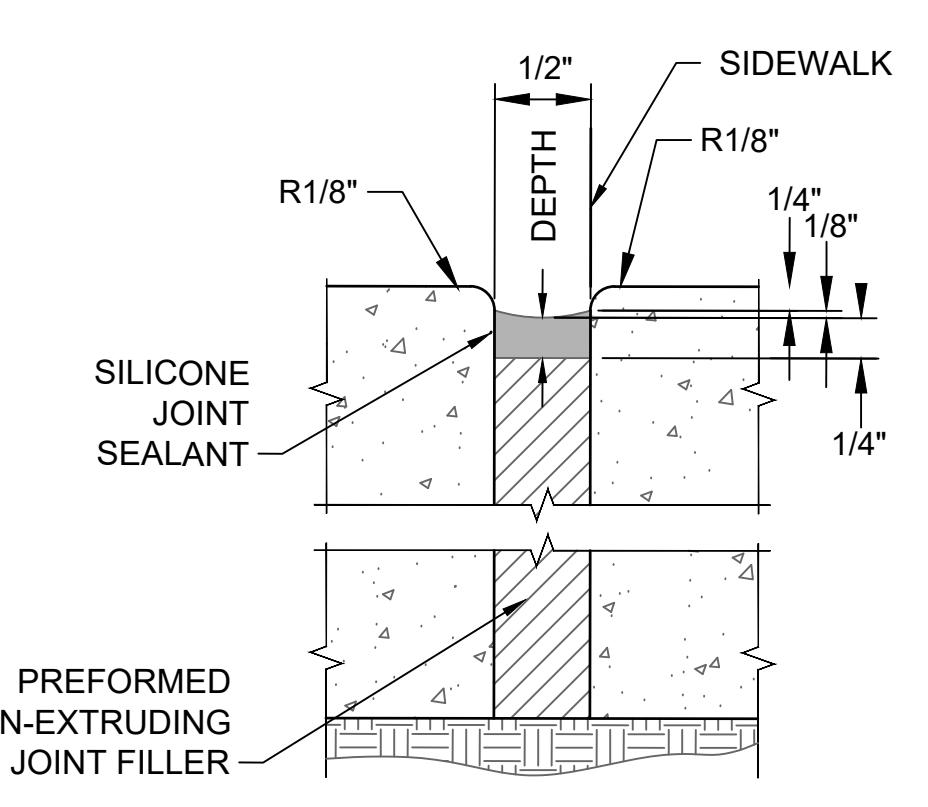


PLAN

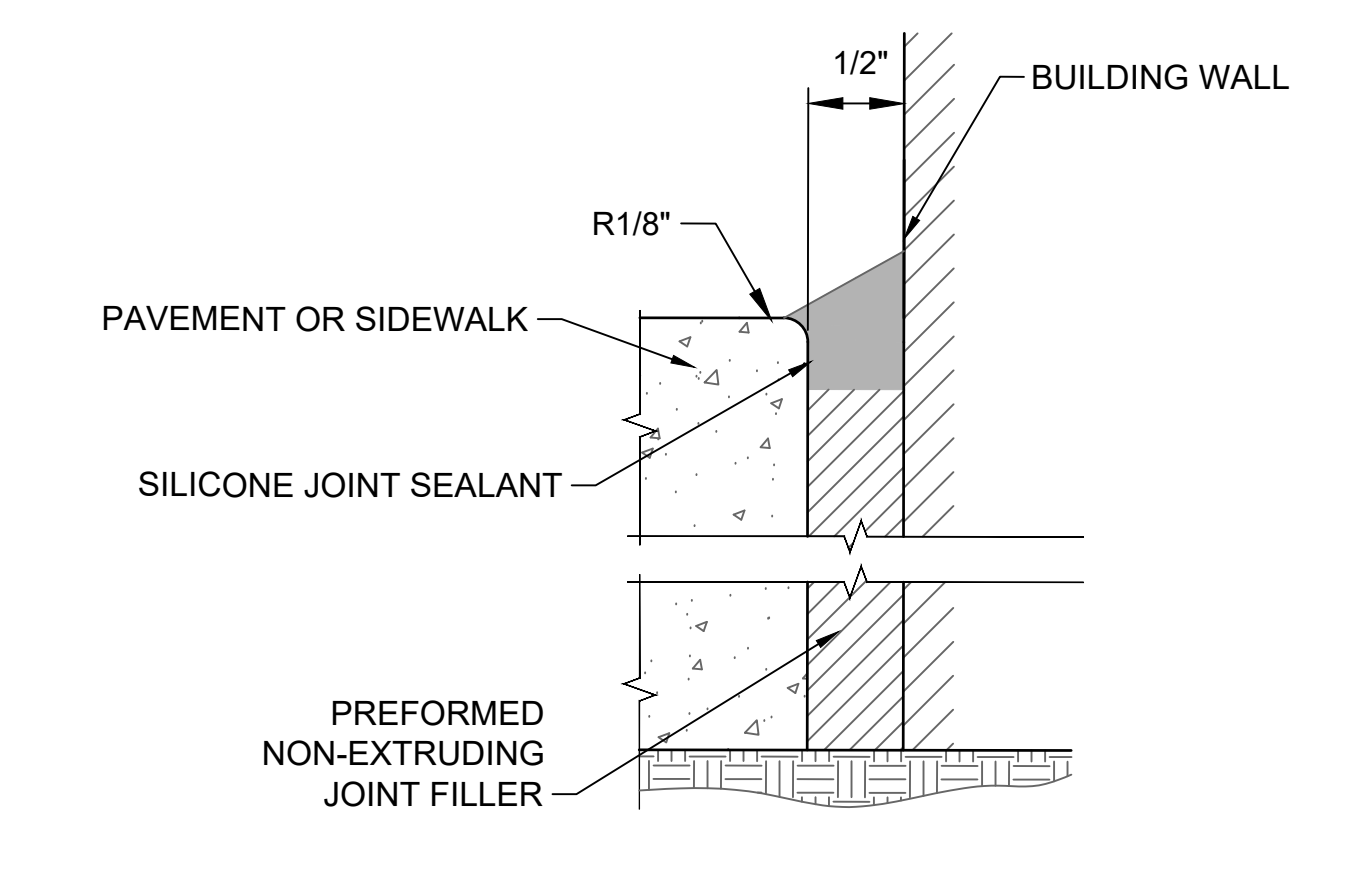
8 SIDEWALK DETAIL
SCALE: NTS



PAVEMENT ISOLATION JOINT W/ HOT POUR SEALANT

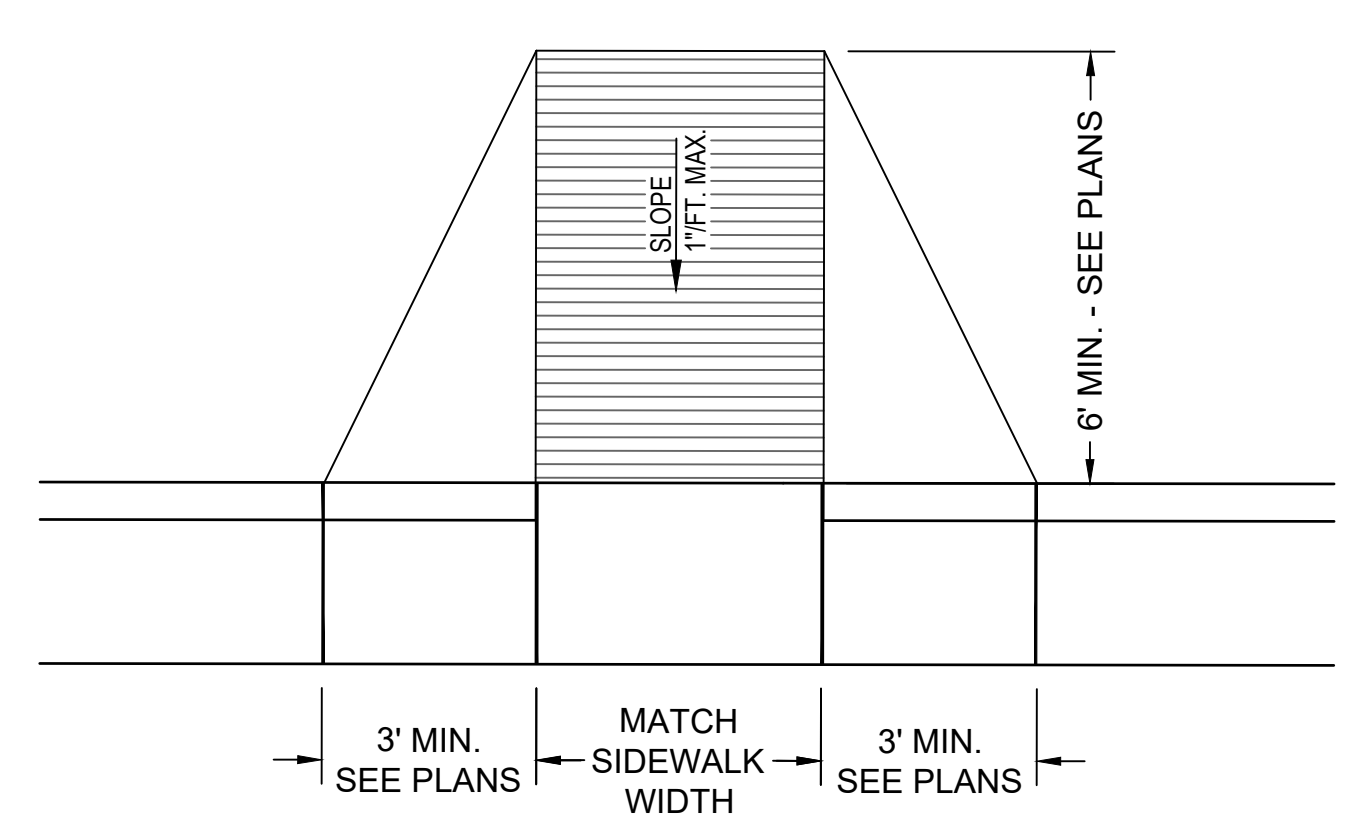


SIDEWALK OR PAVEMENT ISOLATION JOINT WITH SILICONE SEALANTS



BUILDING ISOLATION JOINT

10 SIDEWALK OR PAVEMENT ISOLATION (EXPANSION) JOINT DETAILS
SCALE: NTS



NOTES:
1. SURFACE TEXTURE OF THE RAMP SHALL BE OBTAINED BY A COARSE BROOMING AND TINDING, TRANSVERSE TO THE SLOPE OF THE RAMP.
2. CARE SHALL BE TAKEN TO ASSURE A UNIFORM GRADE ON THE RAMP, FREE OF SAGS AND SHORT GRADE CHANGES.
3. THE NORMAL GUTTER LINE PROFILE SHALL BE MAINTAINED THROUGH THE AREA OF THE RAMP OPENING.
4. CROSS SLOPES SHALL NOT EXCEED 2%.

7 ABA CURB RAMPS
SCALE: NTS

File Path: Y:\050010504 - va_slovak falls - construct new sps - cpl_07_curb_01_curb.dwg | saved: 2/14/2025 11:55 AM | plot: 2/14/2025 12:15 PM | e:\e\brodmakle | e:\e\brodmakle

CONSULTANTS 		ARCHITECT/ENGINEER OF RECORD 13605 1st Ave. N. #100 Plymouth, MN 55441 P 763.412.4000 F 763.412.4090 e-mn.com Anderson Engineering of Minnesota, LLC Proj # 16584		STAMP I HEREBY CERTIFY THAT THIS PLAN, SPECIFICATION, OR REPORT, WAS PREPARED BY ME OR UNDER MY DIRECT SUPERVISION, AND THAT I AM A DULY LICENSED PROFESSIONAL ENGINEER UNDER THE LAWS OF THE STATE OF MINNESOTA EDWIN J. V. BROADMARKLE, PE DATE: 2025.02.14 LICENSE NO: 55409	Office of Construction and Facilities Management U.S. Department of Veterans Affairs	Drawing Title CIVIL DETAILS Approved: Project Director SIOUX FALLS VA HEALTH CARE SYSTEM	Phase BID DOCUMENTS FULLY SPRINKLERED	Project Title CONSTRUCT NEW SPS Location SIOUX FALLS, SOUTH DAKOTA Issue Date 02/14/2025 Checked EB Drawn AB	Project Number 438-460 Building Number 5 Drawing Number C-504
------------------------	--	---	--	---	--	---	---	--	---