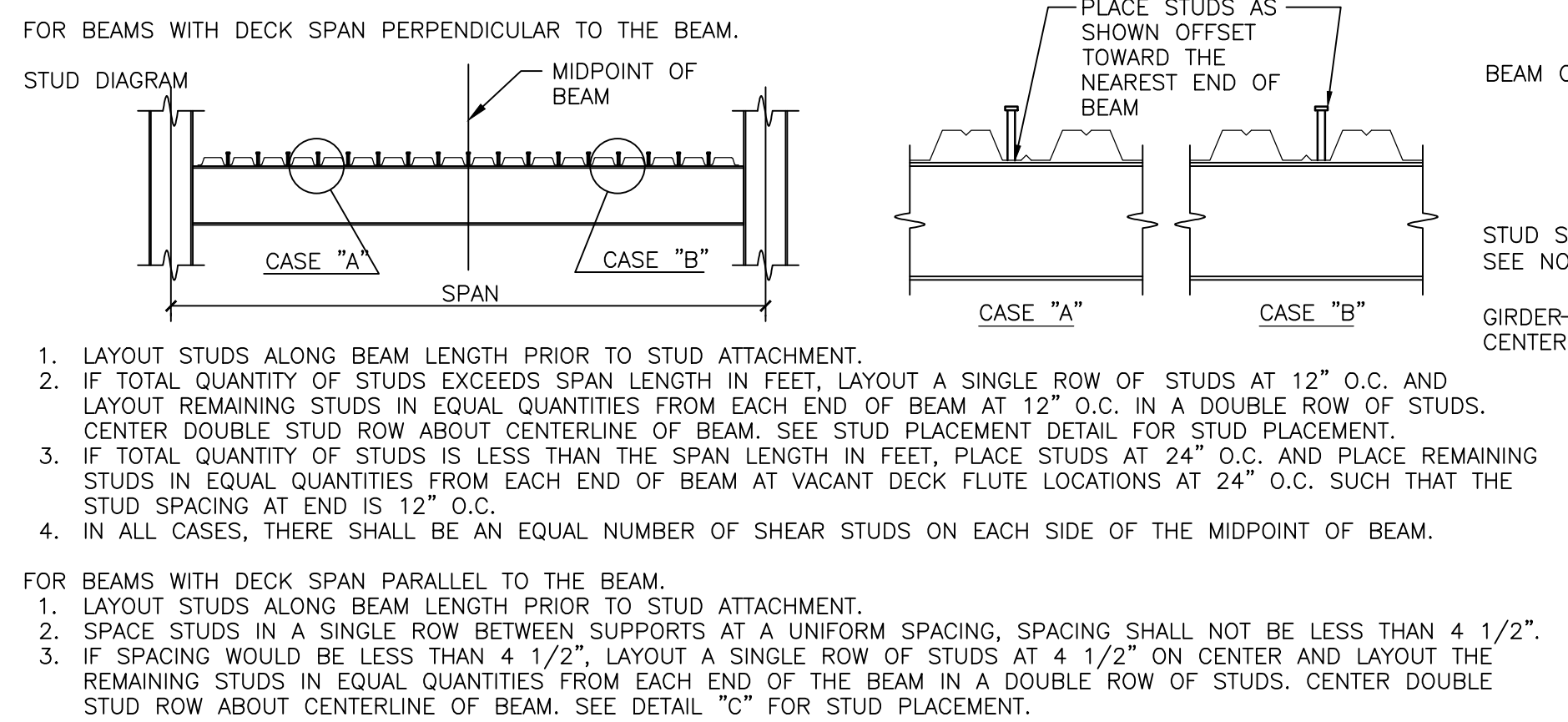


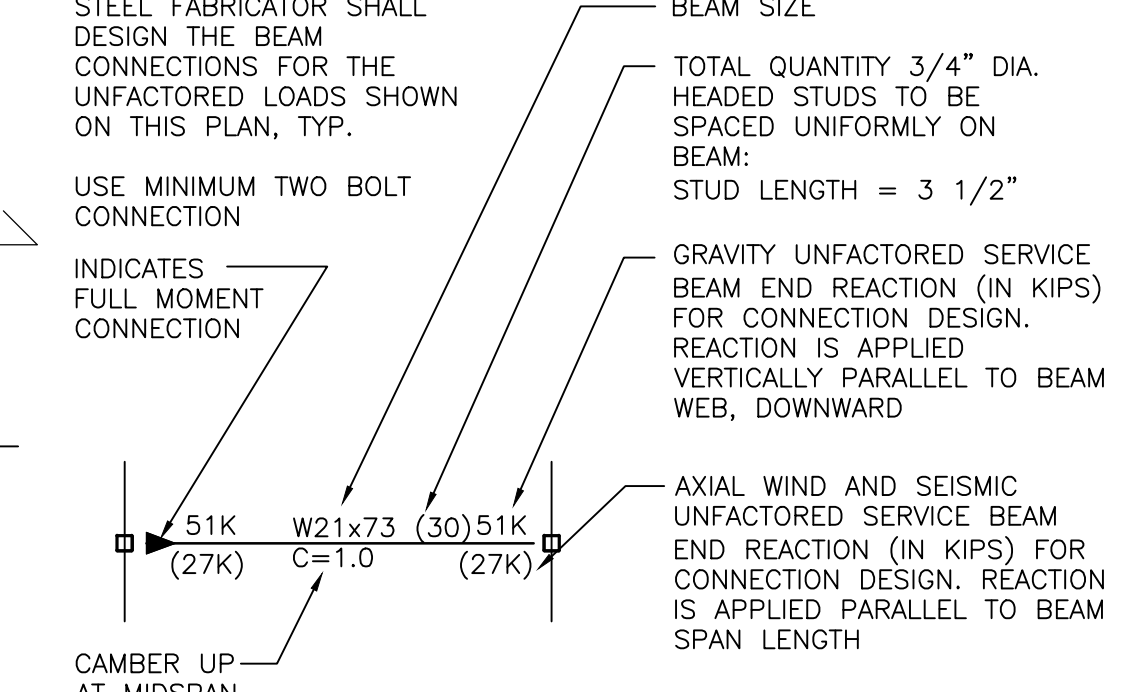
**MARKS AND SYMBOLS LEGEND**

	SECTION MARK SHEET NUMBER
	INDICATES EXISTING GRID
	INDICATES NEW GRID
	INDICATES SLAB/F.F.E. STEP
	INDICATES MOMENT CONNECTION BEAM TO COLUMN

**COMPOSITE BEAM NOTES AND DETAILS**



**COMPOSITE BEAM LEGEND**



**COMPOSITE DECK ATTACHMENT**

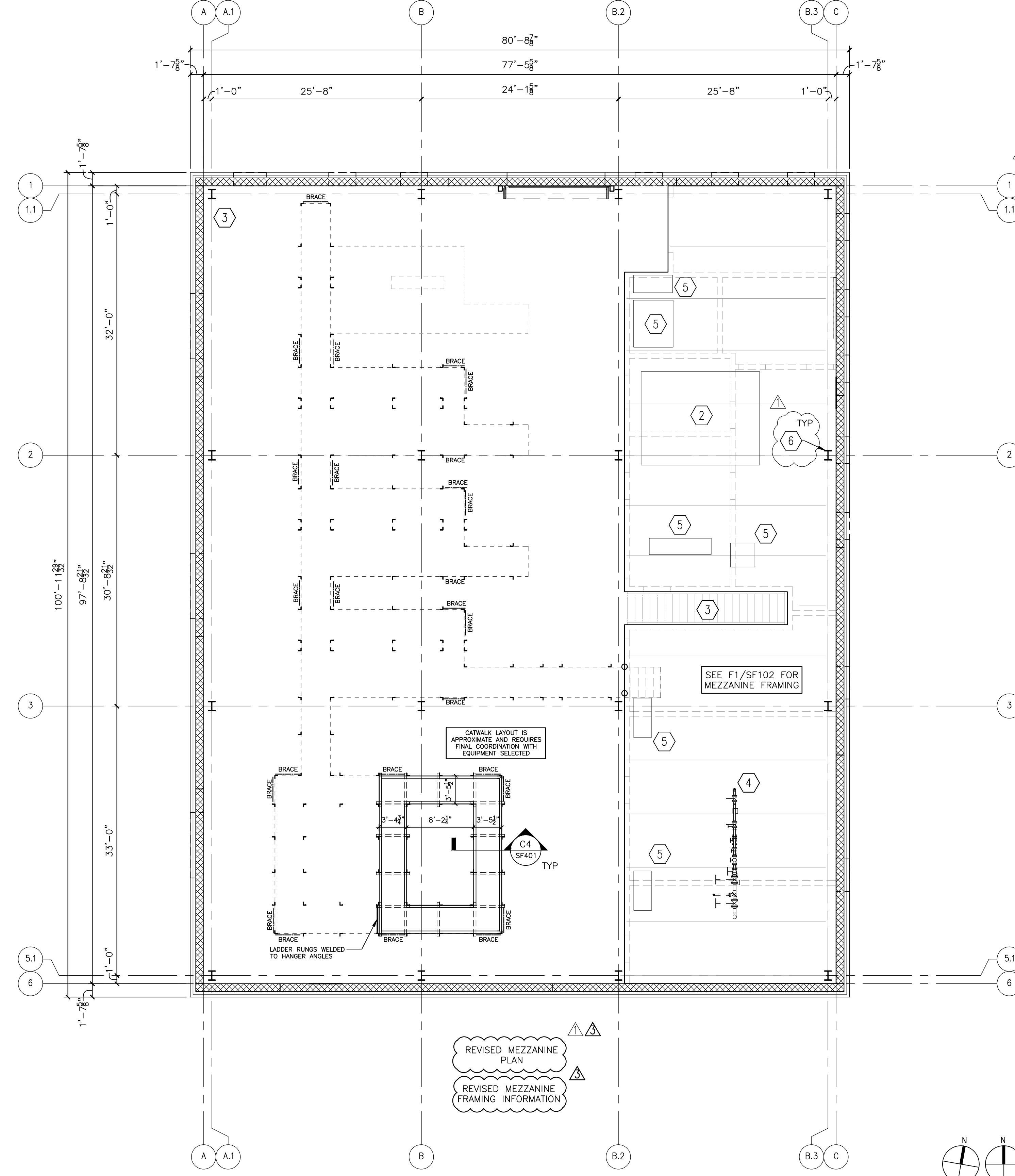
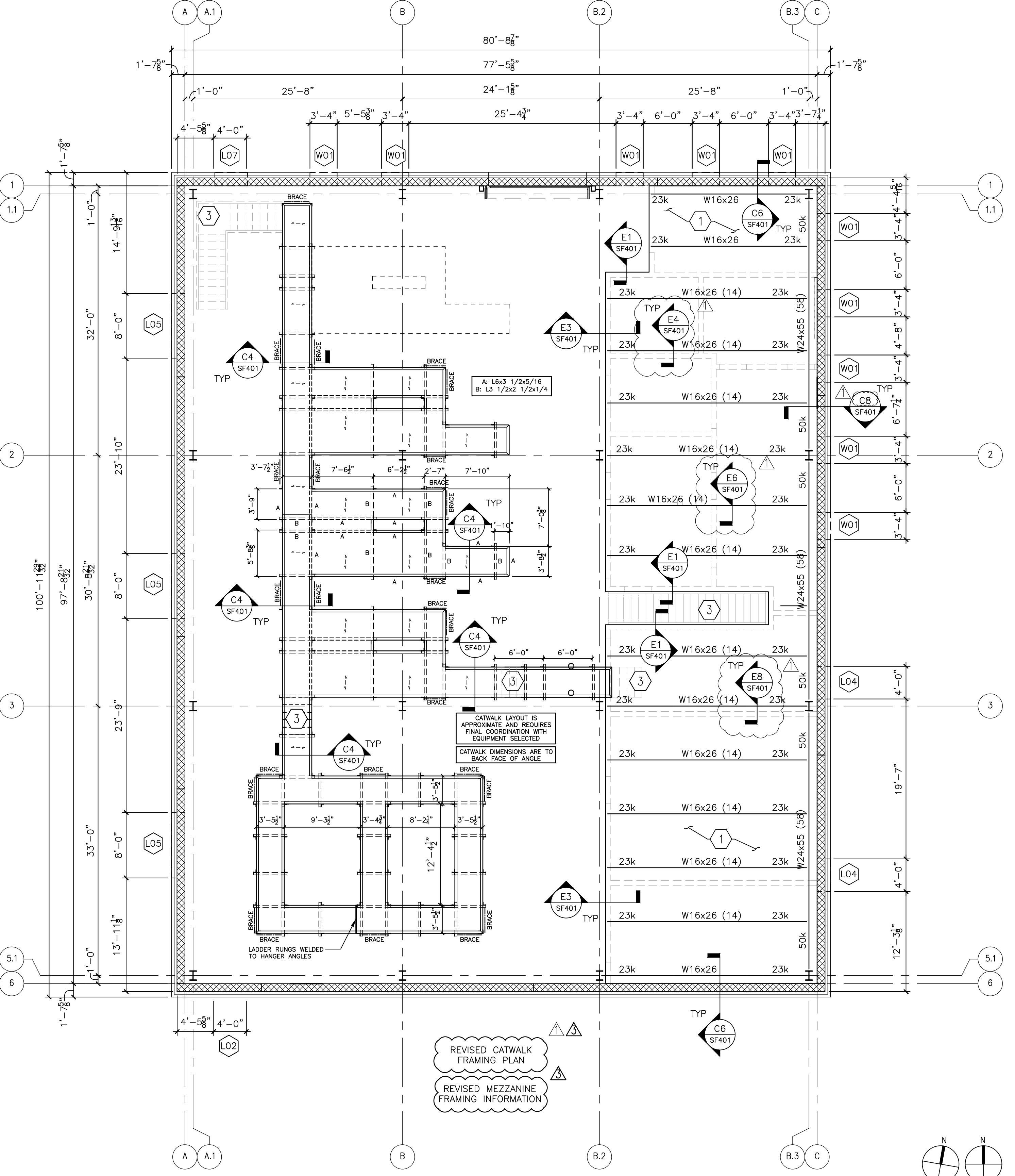
- DECK PERPENDICULAR TO SUPPORT - (4)-5/8" DIA. PUDDLE WELDS PER SHEET.
- DECK PARALLEL TO SUPPORT - 5/8" DIA. PUDDLE WELDS AT 12" O.C. (24" O.C. MAX.)
- SIDELAPS - 3/8"x1 1/4" ARC BEAM WELDS AT 24" O.C. U.N.O.
- DECK SHALL BE CONTINUOUS OVER (3) SUPPORTS, U.N.O.

**GENERAL NOTES**

- GROUND FINISHED FLOOR ASSUMED ELEVATION = 100'-0" (4754.87') ALL ELEVATIONS ARE BASED ON THIS DATUM UNLESS NOTED OTHERWISE.
- SEE SHEET SG001 AND SG002 FOR GENERAL NOTES AND DESIGN LOADS.
- SEE SHEETS SF401, SF402, AND SF403 FOR FRAMING DETAILS.
- COORDINATE LIMITS AND LOCATION OF VENEER WITH ARCHITECTURAL DRAWINGS. DIMENSIONS SHOWN TO OUTSIDE OF BUILDING ARE TO FACE OF BRICK, TYP.
- SEE PLUMBING DRAWINGS FOR LOCATION OF FLOOR DRAINS AND DEPRESSED/SLOPED SLABS.
- VERIFY ALL WALL OPENING AND INTERIOR WALL DIMENSIONS AND LOCATIONS WITH ARCHITECTURAL DRAWINGS.
- VERIFY ALL DIMENSIONS IN THE FIELD AND WITH EQUIPMENT SUPPLIER REQUIREMENTS FOR FULL COORDINATION OF MISC. SUPPORT AND FRAMING STEEL AND OTHER STRUCTURAL ITEMS PRIOR TO FABRICATION. LOCATIONS OF SUPPORTS, HANGERS, ATTACHMENTS AND OTHER ITEMS WILL VARY ACCORDING TO EQUIPMENT SELECTED AND FINAL CONFIGURATION OF INSTALLED MEP SYSTEMS. SEE GENERAL NOTES ON SG001 AND SG002.
- SEE CB/SG005 FOR HOUSEKEEPING OR EQUIPMENT MOUNTING PADS. REFER TO ARCH AND MEP DRAWINGS FOR SIZE AND LOCATION OF PADS.
- REFER TO SHEET S004 FOR TYPICAL INTERIOR NON-LOADBEARING LIGHT GAGE FRAMING DETAILS. REFER TO ARCHITECTURAL AND MEP DRAWINGS FOR ADDITIONAL COORDINATION OF EQUIPMENT AND CABINETS SHOWN TO BE MOUNTED TO WALLS NOT SPECIFICALLY SHOWN THIS PLAN. THE CONTRACTOR SHALL BE RESPONSIBLE FOR COORDINATING WALL FRAMING PER DETAILS ON SHEET S004 FOR FRAMING OF WALLS AT LOCATIONS WHERE ADDITIONAL EQUIPMENT AND CABINETS 20 LBS AND GREATER ARE TO BE MOUNTED UNDER THIS CONTRACT.
- ONLY THOSE PORTIONS OF THE EXISTING STRUCTURE ARE SHOWN WHERE PERTINENT TO THE LOCATIONS OF SUPPORT FRAMING MODIFICATION OR ADDITION. DRAWINGS SHALL BE USED FOR LAYOUT RELATIVE TO THE EXISTING STRUCTURE, HOWEVER FIELD VERIFICATION OF FRAMING LOCATIONS IS REQUIRED BEFORE INSTALLATION OF ANY NEW FRAMING.
- WHEN CORING THROUGH CONCRETE, CONTRACTOR SHALL PROVIDE GROUND PENETRATING RADAR OR OTHER MEANS OF SLAB OR OTHER STRUCTURAL COMPONENT REINFORCING LOCATION AND MARK SUCH LOCATIONS SO THAT NO EXISTING REINFORCING IS DAMAGED DURING INSTALLATION OF ANY NEW FASTENERS (POWER ACTUATED FASTENERS, SCREWS, BOLTS OR OTHER CONNECTORS), FLOOR SINKS DRAINS OR OTHER MEP SLAB PENETRATIONS TO TOP OF BOTTOM OF EXISTING FLOOR SLAB. ANY DAMAGED REINFORCING WILL REQUIRE STRUCTURAL REPAIRS AT THE CONTRACTORS EXPENSE.
- SEE COMPOSITE BEAM NOTES AND DETAILS THIS SHEET FOR SHEAR STUDS AND DECK ATTACHMENT TO FRAMING MEMBERS AND DECK FASTENER TYPE, SIZE, AND SPACING.
- VERIFY ALL OPENINGS FOR MECHANICAL SHAFTS, STAIRS, ETC. WITH ARCHITECTURAL AND MECHANICAL DRAWINGS. SEE C2/SF402 FOR TYPICAL FLOOR OPENINGS LESS THAN 24". SEE C9/SF402 FOR TYPICAL FLOOR OPENINGS GREATER THAN 24".
- SEE E2/SF402 FOR TYPICAL AND GENERAL COMPOSITE BEAM FRAMING DETAILS.

**KEY NOTES**

- 3" LIGHTWEIGHT CONCRETE ON VULCORATED GALVANIZED 2" 20GA VLI COMPOSITE METAL DECK. TOTAL SLAB THICKNESS = 6". SEE SF104 FOR COMPOSITE FLOOR SLAB REINFORCING.
- 6" REINFORCED CONCRETE EQUIPMENT PAD. SEE CB/SG005 FOR PAD DETAILS. PAD SHALL BE DOWELED TO SLAB PER DETAIL, BUT INSTALLED AS A COLD JOINT / SEPARATELY POURED PAD NOT INTEGRAL WITH BUILDING MEZZANINE SLAB. SEE EQUIPMENT SUPPLIER REQUIREMENTS FOR PAD DIMENSIONS. PAD SIZES SHOWN ARE FOR APPROXIMATE SIZE BIDDING PURPOSES ONLY AND VARY BY FINAL EQUIPMENT MODEL PROVIDED. GC TO COORDINATE FINAL PAD SIZE AND EXACT LOCATION. SEE CB/SB302.
- SEE ARCHITECTURAL DRAWINGS FOR STAIR PLANS AND DETAILS, STAIR FRAMING IS DELEGATED DESIGN SUBMITTAL, SEE SHEET SG002 AND SB101 FOR MORE INFORMATION.
- STEAM HEADER SUPPORTED FROM MEZZANINE FLOOR SLAB WITH STEEL PIPE STANDS, SEE MECHANICAL DRAWINGS. ANCHORS SHALL BE DRILLED AND EPOXIED.
- 4" REINFORCED CONCRETE EQUIPMENT PAD. SEE CB/SG005 FOR PAD DETAILS. PAD SHALL BE DOWELED TO SLAB PER DETAIL, BUT INSTALLED AS A COLD JOINT / SEPARATELY POURED PAD NOT INTEGRAL WITH BUILDING MEZZANINE SLAB. SEE EQUIPMENT SUPPLIER REQUIREMENTS FOR PAD DIMENSIONS. PAD SIZES SHOWN ARE FOR APPROXIMATE SIZE BIDDING PURPOSES ONLY AND VARY BY FINAL EQUIPMENT MODEL PROVIDED. GC TO COORDINATE FINAL PAD SIZE AND EXACT LOCATION. SEE CB/SB302.
- SEE E9/SF402 FOR DECK BEARING SUPPORTS AT COLUMNS, TYP.



**F1 MEZZANINE AND CATWALK FRAMING PLAN**  
1/8" = 1'-0"

**F5 MEZZANINE SLAB AND UPPER CATWALK FRAMING PLAN**  
1/8" = 1'-0"

ADDENDUM 1	08-09-24
ADDENDUM 2 (NO STRUCTURAL CHANGES)	XX-XX-XX
ADDENDUM 3	01-17-25
Revisions:	Date:

**CONSULTANT**

**MOON TREE CONSULTING**

1808 DEEP CREEK RD, OKC, OK 73131  
918.527.7166 INFO@MOONTREELLC.COM

**ARCHITECT/ENGINEER OF RECORD**

**paradigm**

Architecture | Engineering | Design-Build

200 Envoy Circle, Suite 201, Louisville KY 40299 - www.paradigmusa.com

**STAMP**

STATE OF KENTUCKY

DAVID R. WALTON  
31109  
LICENSED PROFESSIONAL ENGINEER

**Office of Construction and Facilities Management**

**VA** U.S. Department of Veterans Affairs

**Drawing Title**

MEZZANINE AND CATWALK FRAMING PLANS

**Approved:** Project Director

**Phase**

100% CONSTRUCTION DOCUMENTS

**FULLY SPRINKLERED**

**Project Title**

DESIGN REPLACE BOILER PLANT

**Location**

SIoux FALLS VAMC  
SIoux FALLS, SD 57005

**Issue Date**

08-09-2024

**Checked**

TWW

**Drawn**

DRW

**Project Number**

438-22-900

**Building Number**

12

**Drawing Number**

SF102