

SPREAD FOOTING SCHEDULE			
MARK	SIZE (WxLxT)	REINFORCING (EACH WAY)	NOTES
F1	9'-0"x9'-0"x2'-6"	(9)-#7 T&B	1,2,3
F2	9'-6"x9'-6"x2'-6"	(10)-#7 T&B	1,2,3
F3	11'-0"x11'-0"x2'-6"	(11)-#7 T&B	1,2,3
F4	12'-0"x12'-0"x2'-6"	(12)-#7 T&B	1,2,3

CONTINUOUS FOOTING SCHEDULE			
MARK	SIZE (WxD)	REINFORCING	STIRRUPS
CF1	3'-0"x2'-0"	(6)-#6 CONT.	#3 AT 16" O.C.
CF2	2'-0"x2'-0"	(4)-#6 CONT.	#3 AT 16" O.C.

COLUMN SCHEDULE			
MARK	SIZE	BASE PLATE	NOTES
C1	W12x65	BP1	1
C2	W12x53	BP1	1,2

WALL OPENING SCHEDULE					
MARK	OPENING WIDTH	OPENING HEIGHT	BOTTOM ELEVATION	TOP ELEVATION	JAMB REINFORCING
DOOR OPENINGS - EXTERIOR, BLAST RATED, SEE SPECS					
DO1	3'-4"	7'-4"	0'-0"	7'-4"	
DO2	14'-0"	8'-8"	0'-0"	8'-8"	
DO3	6'-4"	7'-4"	0'-0"	7'-4"	
LOUVER OPENINGS - EXTERIOR, BLAST RATED, SEE SPECS					
L01	8'-0"	8'-0"	1'-4"	9'-4"	
L02	4'-0"	8'-0"	1'-4"	9'-4"	
L03	7'-0"	7'-0"	2'-0"	9'-0"	
L04	4'-0"	4'-0"	6'-0"	10'-0"	
L05	8'-0"	8'-0"	16'-8"	24'-8"	
L06	4'-0"	4'-0"	21'-0"	25'-0"	
L07	4'-0"	8'-0"	16'-8"	24'-8"	
WINDOW OPENINGS - EXTERIOR, BLAST RATED, SEE SPECS					
W01	3'-4"	8'-7 1/2"	12'-5 1/2"	21'-1"	

NOTES:
 1. SEE PLANS AND DETAILS FOR TOP OF FOOTING ELEVATION.
 2. SEE DETAILS FOR CONFIGURATION OF REINFORCING.
 3. T&B INDICATES TOP AND BOTTOM REINFORCING MATS.

NOTES:
 1. SEE C1/S1/S0005 FOR ANCHOR BOLT AND BASE PLATE INFORMATION.
 2. C2 OPTION APPLIES TO A.1/1.1 AND A.1/5.1 GRIDS ONLY.

NOTES:
 1. SEE ARCH ELEVATIONS FOR ADDITIONAL INFORMATION ON OPENINGS IN WALLS.
 2. SEE SE201 ELEVATIONS FOR CONFIGURATION OF REINFORCING IN ADDITION TO TYPICAL REINFORCING CALLED OUT FOR WALLS.
 3. ENVELOPE BLAST RATING MINIMUM REQUIREMENTS FOR DESIGN/CERTIFICATION OF COMPONENTS LOADING SHALL BE MIN. 13.44 PSI AT 50.78 PSI-MSEC.
 4. WINDOWS SHALL BE LAMINATED AND DESIGNED FOR BLAST LOADING, IF IGU SYSTEMS ARE USED, ONLY THE INNER PANE SHALL BE LAMINATED, MIN 1/4" PANE THICKNESS.
 5. WINDOW AND DOOR FRAMES AND ANCHORAGE SHALL BE DESIGNED FOR COLLECTED BLAST LOADING INDICATED IN NOTE 3.

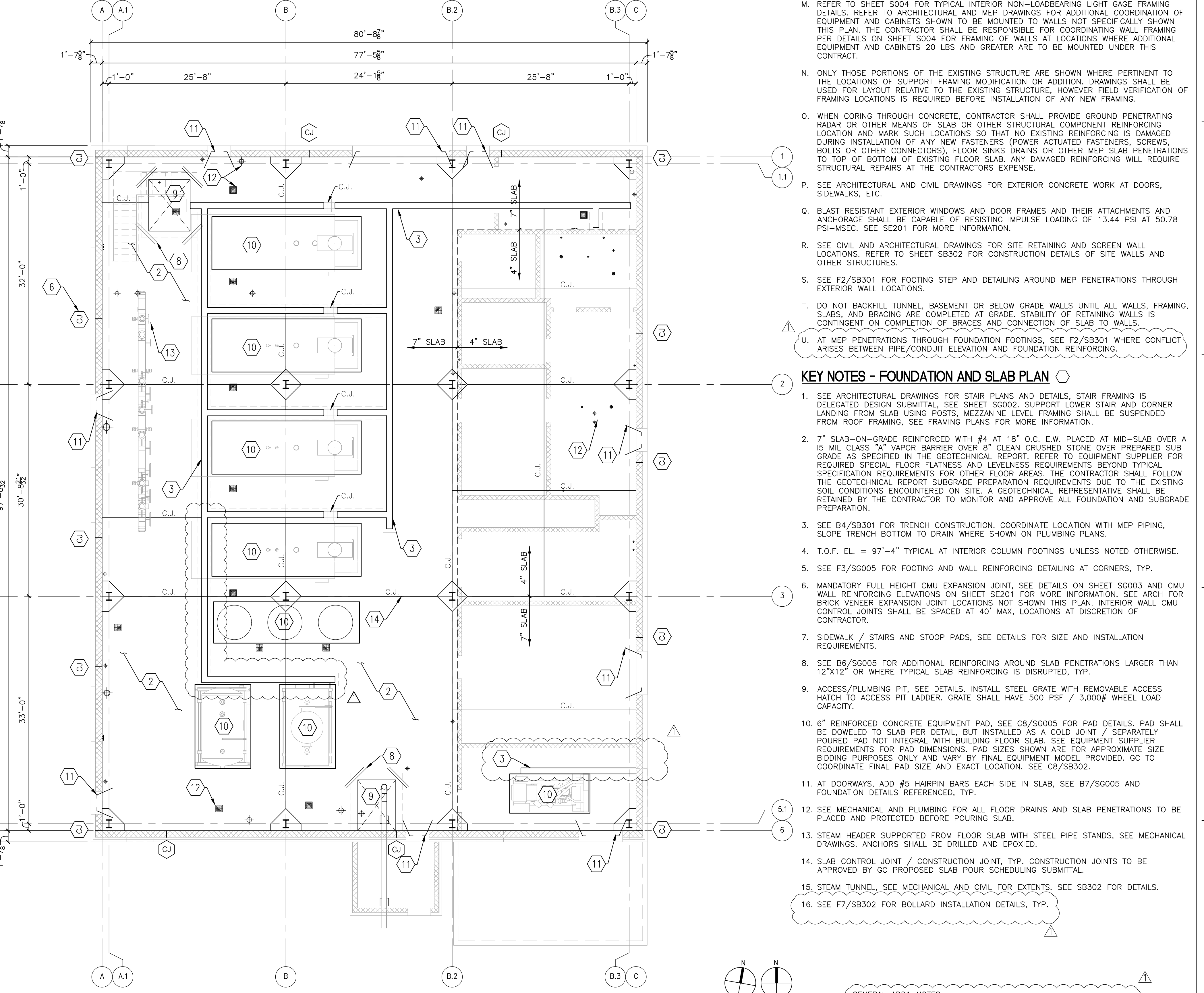
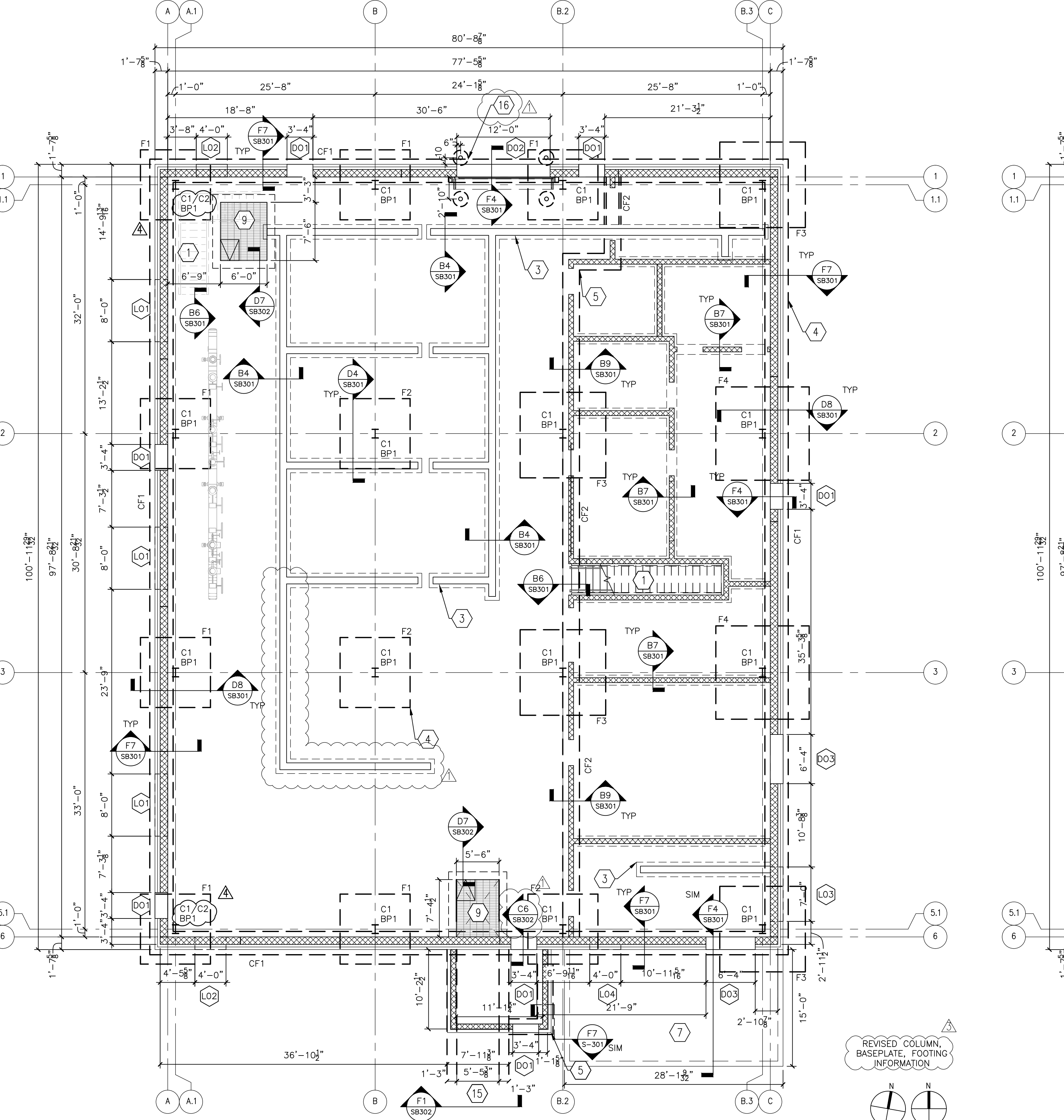
MARKS AND SYMBOLS LEGEND	
	SECTION MARK SHEET NUMBER
	FOOTING DESIGNATION SEE SCHEDULE THIS SHEET
	INDICATES FOOTING STEP SEE DETAIL F1/S0005
	INDICATES CONCRETE WALL
	INDICATES CONTINUOUS FOOTING. SEE SCHEDULE THIS SHEET.
	INDICATES EXISTING GRID
	INDICATES NEW GRID
	INDICATES CONTROL/CONST. JOINT. SEE DETAIL F7/S0005
	INDICATES STEEL COLUMN AND BASEPLATE SIZE SEE C1/S0005 FOR BASEPLATES
	INDICATES SLAB/F.F.E. STEP

LIGHT GAGE WALL FRAMING NOTES

- SEE SHEET S0003 AND FOUNDATION AND FRAMING DETAILS FOR BLAST RESISTANT EXTERIOR LIGHT GAGE WALL FRAMING INFORMATION AND DETAILS. ALL EXTERIOR WALLS SHALL CONFORM TO THE REQUIREMENTS SHOWN ON SHEET S0003. BLAST RESISTANT INTERIOR AND EXTERIOR WINDOWS AND DOOR FRAMES AND THEIR ATTACHMENTS SHALL BE CAPABLE OF RESISTING BLAST IMPULSE LOADING ON THIS SHEET.
- AT TYPICAL INTERIOR PARTITION WALLS WITH NO ATTACHED WALL-MOUNTED EQUIPMENT OR CABINETS, REFER TO TYPICAL DETAIL F4/S0004 FOR MINIMUM REQUIRED FRAMING AND ATTACHMENT INFORMATION. REFER TO ARCHITECTURAL DRAWINGS FOR ACTUAL REQUIRED WALL FRAMING THICKNESS (3 5/8" MIN. FOR ALL WALLS EXCEPT FURRING WALLS). REFER TO ARCHITECTURAL AND MEP DRAWINGS FOR ADDITIONAL COORDINATION OF EQUIPMENT AND CABINETS SHOWN TO BE MOUNTED TO WALLS NOT SHOWN THIS PLAN. THE CONTRACTOR SHALL BE RESPONSIBLE FOR COORDINATING WALL FRAMING PER DETAILS F1/S0004, F2/S0004 AND B1/S0004 FOR FRAMING OF WALLS AT LOCATIONS WHERE EQUIPMENT AND CABINETS ARE TO BE MOUNTED WHERE NOT SPECIFICALLY SHOWN THIS SHEET.
- WHERE CABINETS ARE TO BE MOUNTED TO WALLS, REFER TO DETAIL F2/S0004 FOR MINIMUM REQUIRED FRAMING AND ATTACHMENT INFORMATION. REFER TO ARCHITECTURAL DRAWINGS FOR ACTUAL REQUIRED WALL FRAMING THICKNESS (3 5/8" MIN). DASHED LINE INDICATES APPROXIMATE EXTENTS OF SUPPORT FRAMING WITH GREATER REQUIREMENTS THAN TYPICAL WALL FRAMING, REFER TO DETAILS FOR MORE INFORMATION.
- WHERE EQUIPMENT AND WALL-MOUNTED SINKS ARE TO BE MOUNTED TO WALLS, REFER TO DETAIL F1/S0004 FOR MINIMUM REQUIRED FRAMING AND ATTACHMENT INFORMATION. REFER TO ARCHITECTURAL DRAWINGS FOR ACTUAL REQUIRED WALL FRAMING THICKNESS (3 5/8" MIN). DASHED LINE INDICATES APPROXIMATE EXTENTS OF SUPPORT FRAMING WITH GREATER REQUIREMENTS THAN TYPICAL WALL FRAMING, REFER TO DETAILS FOR MORE INFORMATION.
- PARTIAL HEIGHT WALLS AND COUNTERTOP STATION FACE WALLS SHALL HAVE SUPPORTING STRUCTURE PER DETAIL C2/S0004 AT ENDS OF WALLS AND AT 48" O.C. MAX.
- ANY WALL MOUNTED TOILETS SHALL HAVE FULL HEIGHT STEEL FRAME WALL CARRIERS AND SHALL NOT BE MOUNTED TO WALL FRAMING, REFER TO PLUMBING DRAWINGS AND SPECIFICATIONS FOR TOILET INFORMATION.

GENERAL NOTES

- GROUND FINISHED FLOOR ASSUMED ELEVATION = 100'-0" (4754.87') ALL ELEVATIONS ARE BASED ON THIS DATUM UNLESS NOTED OTHERWISE.
- SEE SHEET S0001 AND S0002 FOR GENERAL NOTES AND DESIGN LOADS.
- SEE SHEETS SB301 AND SB302 FOR FOUNDATION DETAILS.
- COORDINATE LIMITS AND LOCATION OF VENEER WITH ARCHITECTURAL DRAWINGS. DIMENSIONS SHOWN TO OUTSIDE OF BUILDING ARE TO FACE OF BRICK, TYP.
- SEE PLUMBING DRAWINGS FOR LOCATION OF FLOOR DRAINS AND DEPRESSED/SLOPED SLABS.
- ALL FOOTINGS ARE CENTERED UNDER COLUMNS AT GRID INTERSECTIONS UNLESS NOTED OTHERWISE ON PLAN. FOOTINGS NOT CENTERED OR NOT SUPPORTING COLUMNS ARE LOCATED ON PLAN WITH DIMENSIONS FROM GRIDLINES.
- SEE S0005 FOR BASEPLATE AND ANCHOR BOLT DIAGRAMS.
- VERIFY ALL WALL OPENING AND INTERIOR WALL DIMENSIONS AND LOCATIONS WITH ARCHITECTURAL DRAWINGS.
- SEE ARCH FOR CONTROL JOINT SPACING IN BRICK FACADE WHERE NOT SPECIFICALLY SHOWN THIS SHEET. BRICK JOINTS THIS SHEET ARE REQUIRED AS SHOWN IN ADDITION TO THOSE SHOWN ON ARCH DRAWINGS.
- SEE SE201 FOR BUILDING STRUCTURE ELEVATIONS AND EXTERIOR WALL INFORMATION.
- VERIFY ALL DIMENSIONS IN THE FIELD AND WITH EQUIPMENT SUPPLIER REQUIREMENTS FOR FULL COORDINATION OF MISC. SUPPORT AND FRAMING STEEL AND OTHER STRUCTURAL ITEMS PRIOR TO FABRICATION. LOCATIONS OF SUPPORTS, HANGERS, ATTACHMENTS AND OTHER ITEMS WILL VARY ACCORDING TO EQUIPMENT SELECTED AND FINAL CONFIGURATION OF INSTALLED MEP SYSTEMS. SEE GENERAL NOTES ON S0001 AND S0002.
- SEE C8/S0005 FOR HOUSEKEEPING OR EQUIPMENT MOUNTING PADS. REFER TO ARCH AND MEP DRAWINGS FOR SIZE AND LOCATION OF PADS.
- REFER TO SHEET S004 FOR TYPICAL INTERIOR NON-LOADBEARING LIGHT GAGE FRAMING DETAILS. REFER TO ARCHITECTURAL AND MEP DRAWINGS FOR ADDITIONAL COORDINATION OF EQUIPMENT AND CABINETS SHOWN TO BE MOUNTED TO WALLS NOT SPECIFICALLY SHOWN THIS PLAN. THE CONTRACTOR SHALL BE RESPONSIBLE FOR COORDINATING WALL FRAMING PER DETAILS ON SHEET S004 FOR FRAMING OF WALLS AT LOCATIONS WHERE ADDITIONAL EQUIPMENT AND CABINETS 20 LBS AND GREATER ARE TO BE MOUNTED UNDER THIS CONTRACT.
- ONLY THOSE PORTIONS OF THE EXISTING STRUCTURE ARE SHOWN WHERE PERTINENT TO THE LOCATIONS OF SUPPORT FRAMING MODIFICATION OR ADDITION. DRAWINGS SHALL BE USED FOR LAYOUT RELATIVE TO THE EXISTING STRUCTURE, HOWEVER FIELD VERIFICATION OF FRAMING LOCATIONS IS REQUIRED BEFORE INSTALLATION OF ANY NEW FRAMING.
- WHEN CORING THROUGH CONCRETE, CONTRACTOR SHALL PROVIDE GROUND PENETRATING RADAR OR OTHER MEANS OF SLAB OR OTHER STRUCTURAL COMPONENT REINFORCING LOCATION AND MARK SUCH LOCATIONS SO THAT NO EXISTING REINFORCING IS DAMAGED DURING INSTALLATION OF ANY NEW FASTENERS (POWER ACTUATED FASTENERS, SCREWS, BOLTS OR OTHER CONNECTORS). FLOOR SINKS DRAINS OR OTHER MEP SLAB PENETRATIONS TO BOTTOM OF EXISTING FLOOR SLAB. ANY DAMAGED REINFORCING WILL REQUIRE STRUCTURAL REPAIRS AT THE CONTRACTOR'S EXPENSE.
- SEE ARCHITECTURAL AND CIVIL DRAWINGS FOR EXTERIOR CONCRETE WORK AT DOORS, SIDEWALKS, ETC.
- BLAST RESISTANT EXTERIOR WINDOWS AND DOOR FRAMES AND THEIR ATTACHMENTS AND ANCHORAGE SHALL BE CAPABLE OF RESISTING IMPULSE LOADING OF 13.44 PSI AT 50.78 PSI-MSEC. SEE SE201 FOR MORE INFORMATION.
- SEE CIVIL AND ARCHITECTURAL DRAWINGS FOR SITE RETAINING AND SCREEN WALL LOCATIONS. REFER TO SHEET SB302 FOR CONSTRUCTION DETAILS OF SITE WALLS AND OTHER STRUCTURES.
- SEE F2/SB301 FOR FOOTING STEP AND DETAILING AROUND MEP PENETRATIONS THROUGH EXTERIOR WALL LOCATIONS.
- DO NOT BACKFILL TUNNEL, BASEMENT OR BELOW GRADE WALLS UNTIL ALL WALLS, FRAMING, SLABS, AND BRACING ARE COMPLETED AT GRADE. STABILITY OF RETAINING WALLS IS CONTINGENT ON COMPLETION OF BRACES AND CONNECTION OF SLAB TO WALLS.
- AT MEP PENETRATIONS THROUGH FOUNDATION FOOTINGS, SEE F2/SB301 WHERE CONFLICT ARISES BETWEEN PIPE/CONDUIT ELEVATION AND FOUNDATION REINFORCING.



F1 GROUND FLOOR FOUNDATION PLAN
1/8" = 1'-0"

F5 GROUND FLOOR SLAB PLAN
1/8" = 1'-0"

KEY NOTES - FOUNDATION AND SLAB PLAN

- SEE ARCHITECTURAL DRAWINGS FOR STAIR PLANS AND DETAILS. STAIR FRAMING IS DELEGATED DESIGN SUBMITTAL. SEE SHEET S0002. SUPPORT LOWER STAIR AND CORNER LANDING FROM SLAB USING POSTS. MEZZANINE LEVEL FRAMING SHALL BE SUSPENDED FROM ROOF FRAMING. SEE FRAMING PLANS FOR MORE INFORMATION.
- 7" SLAB-ON-GRADE REINFORCED WITH #4 AT 18" O.C. E.W. PLACED AT MID-SLAB OVER A 4" MIN. CLASS OVER 8" CLEAN CRUSHED STONE OVER PREPARED SUBGRADE AS SPECIFIED IN THE GEOTECHNICAL REPORT. REFER TO EQUIPMENT SUPPLIER FOR REQUIRED SPECIAL FLOOR FLATNESS AND LEVELNESS REQUIREMENTS BEYOND TYPICAL SPECIFICATION REQUIREMENTS FOR OTHER FLOOR AREAS. THE CONTRACTOR SHALL FOLLOW THE GEOTECHNICAL REPORT SUBGRADE PREPARATION REQUIREMENTS DUE TO THE EXISTING SOIL CONDITIONS ENCOUNTERED ON SITE. A GEOTECHNICAL REPRESENTATIVE SHALL BE RETAINED BY THE CONTRACTOR TO MONITOR AND APPROVE ALL FOUNDATION AND SUBGRADE PREPARATION.
- SEE B4/SB301 FOR TRENCH CONSTRUCTION. COORDINATE LOCATION WITH MEP PIPING, SLOPE TRENCH BOTTOM TO DRAIN WHERE SHOWN ON PLUMBING PLANS.
- T.O.F. EL. = 97'-4" TYPICAL AT INTERIOR COLUMN FOOTINGS UNLESS NOTED OTHERWISE.
- SEE F3/S0005 FOR FOOTING AND WALL REINFORCING DETAILING AT CORNERS, TYP.
- MANDATORY FULL HEIGHT CMU EXPANSION JOINT. SEE DETAILS ON SHEET S0003 AND CMU WALL REINFORCING ELEVATIONS ON SHEET SE201 FOR MORE INFORMATION. SEE ARCH FOR BRICK VENEER EXPANSION JOINT LOCATIONS NOT SHOWN THIS PLAN. INTERIOR WALL CMU CONTROL JOINTS SHALL BE SPACED AT 40' MAX. LOCATIONS AT DISCRETION OF CONTRACTOR.
- SIDEWALK / STAIRS AND STOOP PADS, SEE DETAILS FOR SIZE AND INSTALLATION REQUIREMENTS.
- SEE B6/S0005 FOR ADDITIONAL REINFORCING AROUND SLAB PENETRATIONS LARGER THAN 12"x12" OR WHERE TYPICAL SLAB REINFORCING IS INTERRUPTED, TYP.
- ACCESS/PLUMBING PIT, SEE DETAILS. INSTALL STEEL GRATE WITH REMOVABLE ACCESS HATCH TO ACCESS PIT LADDER. GRATE SHALL HAVE 500 PSF / 3,000# WHEEL LOAD CAPACITY.
- 6" REINFORCED CONCRETE EQUIPMENT PAD. SEE C8/S0005 FOR PAD DETAILS. PAD SHALL BE DOWELED TO SLAB PER DETAIL, BUT INSTALLED AS A COLD JOINT / SEPARATELY POURED PAD NOT INTEGRAL WITH BUILDING FLOOR SLAB. SEE EQUIPMENT SUPPLIER REQUIREMENTS FOR PAD DIMENSIONS. PAD SIZES SHOWN ARE FOR APPROXIMATE SIZE BIDDING PURPOSES ONLY AND VARY BY FINAL EQUIPMENT MODEL PROVIDED. GC TO COORDINATE FINAL PAD SIZE AND EXACT LOCATION. SEE C8/SB302.
- AT DOORWAYS, ADD #5 HAIRPIN BARS EACH SIDE IN SLAB. SEE B7/S0005 AND FOUNDATION DETAILS REFERENCED, TYP.
- SEE MECHANICAL AND PLUMBING FOR ALL FLOOR DRAINS AND SLAB PENETRATIONS TO BE PLACED AND PROTECTED BEFORE POURING SLAB.
- STEAM HEADER SUPPORTED FROM FLOOR SLAB WITH STEEL PIPE STANDS, SEE MECHANICAL DRAWINGS. ANCHORS SHALL BE DRILLED AND EPOXIED.
- SLAB CONTROL JOINT / CONSTRUCTION JOINT, TYP. CONSTRUCTION JOINTS TO BE APPROVED BY GC PROPOSED SLAB POUR SCHEDULING SUBMITTAL.
- STEAM TUNNEL, SEE MECHANICAL AND CIVIL FOR EXTENTS. SEE SB302 FOR DETAILS.
- SEE F7/SB302 FOR BOLLARD INSTALLATION DETAILS, TYP.

GENERAL ADD1 NOTES:
 ADDED TYP WHERE APPLICABLE TO NOTES AND DETAIL FOR CLARITY.
 ADDED KEYNOTE CALL-OUTS TO TYP. ITEMS FOR CLARITY

Revisions:	Date:
ADDENDUM 1	08-09-24
ADDENDUM 2 (NO STRUCTURAL CHANGES)	XX-XX-XX
ADDENDUM 3	01-17-25
ADDENDUM 4	02-04-25

CONSULTANT

MOON TREE CONSULTING

1808 DEEP CREEK RD, OKC, OK 73131
 918.527.7166 INFO@MOONTREELLC.COM

ARCHITECT/ENGINEER OF RECORD

paradigm

Architecture | Engineering | Design-Build

200 Envoy Circle, Suite 201, Louisville KY 40299 - www.paradigmusa.com

STAMP

STATE OF KENTUCKY

DAVID R. WALTON
 31109
 LICENSED PROFESSIONAL ENGINEER

Office of Construction and Facilities Management

VA U.S. Department of Veterans Affairs

Drawing Title: **FOUNDATION AND SLAB PLANS**

Approved: Project Director

Phase: **100% CONSTRUCTION DOCUMENTS**

Location: **SIoux FALLS VAMC**
 SIoux FALLS, SD 57005

Project Title: **DESIGN REPLACE BOILER PLANT**

Issue Date: **08-09-2024**

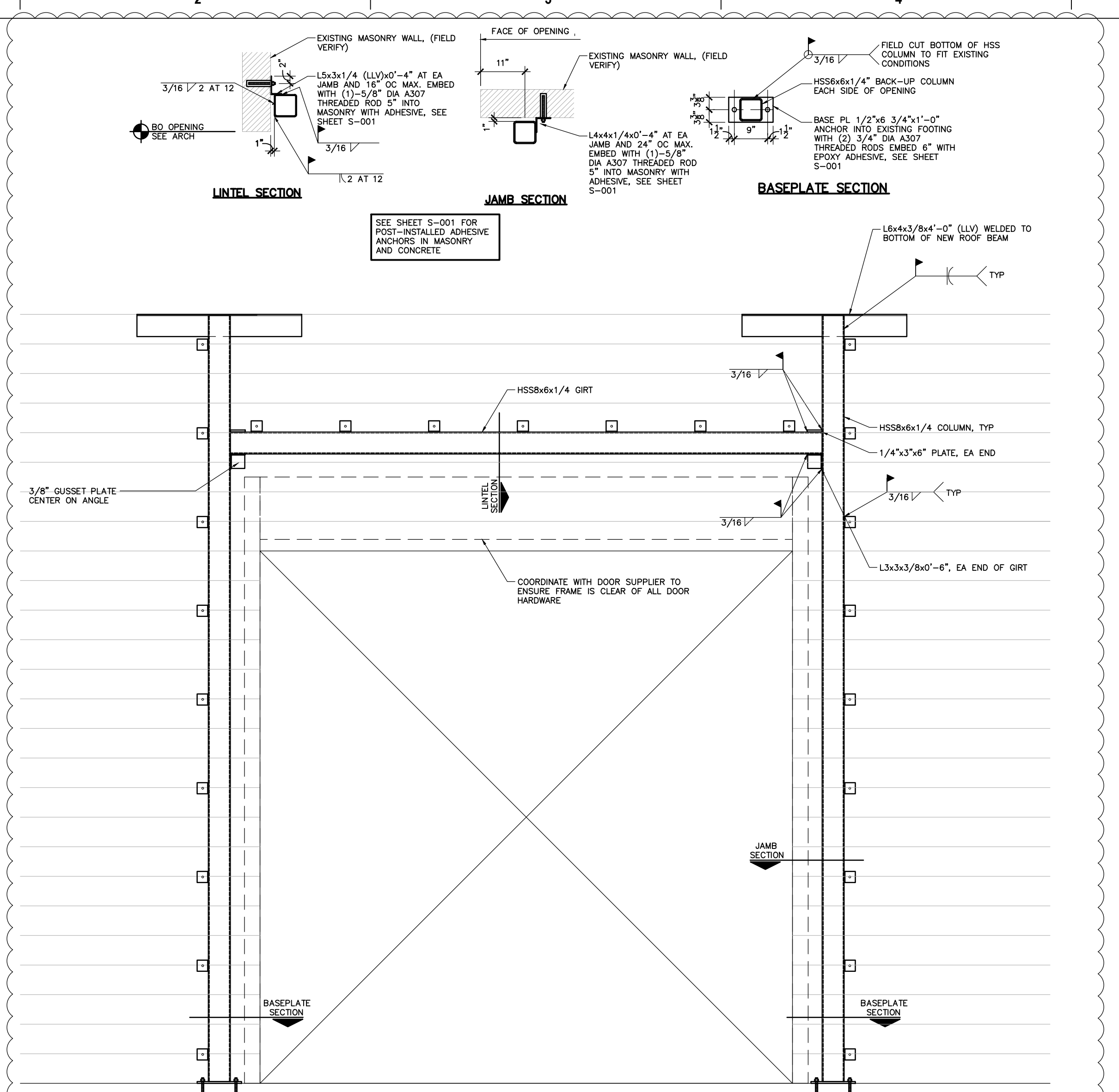
Checked: **TWW**

Drawn: **DRW**

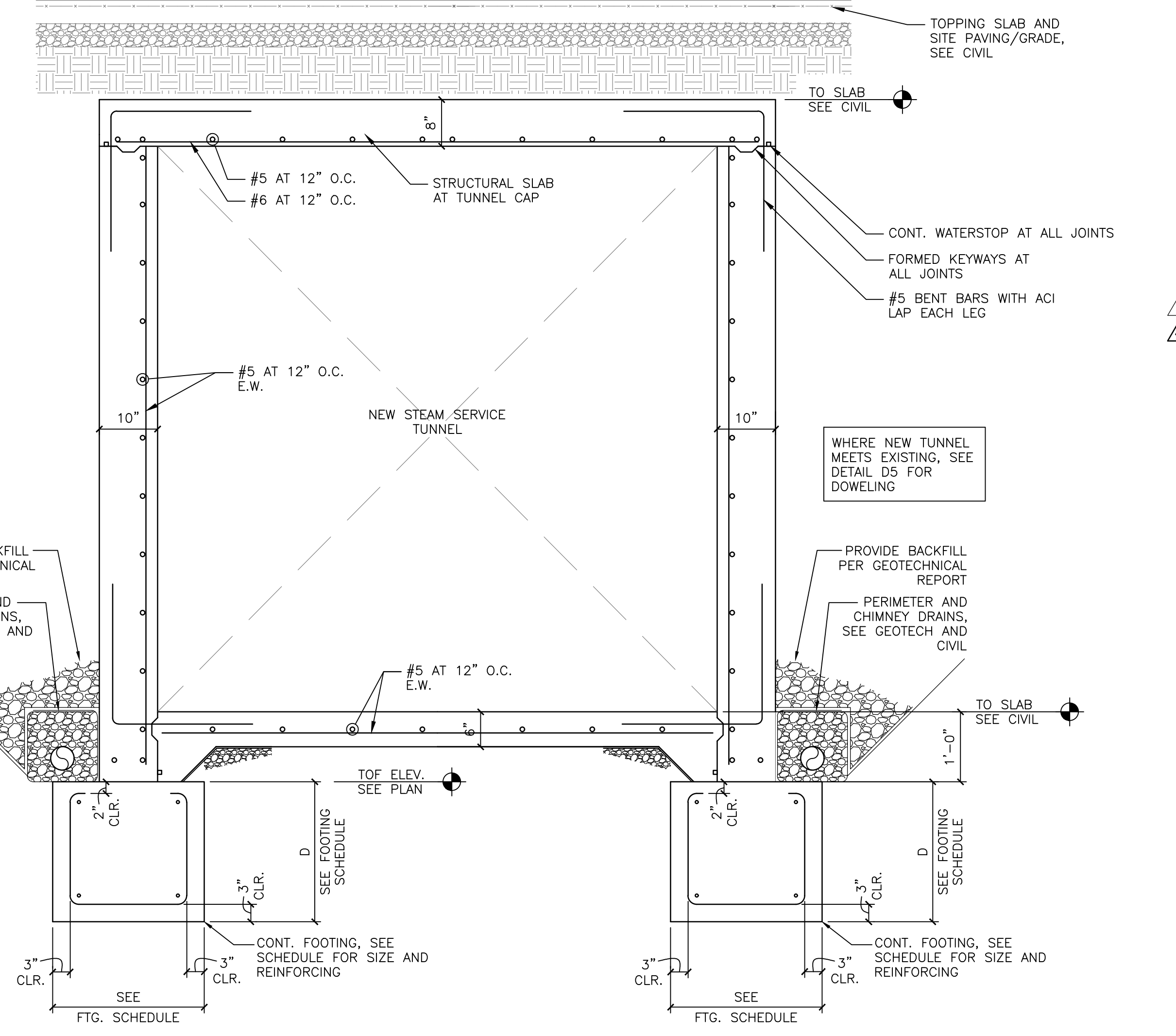
Project Number: **438-22-900**

Building Number: **12**

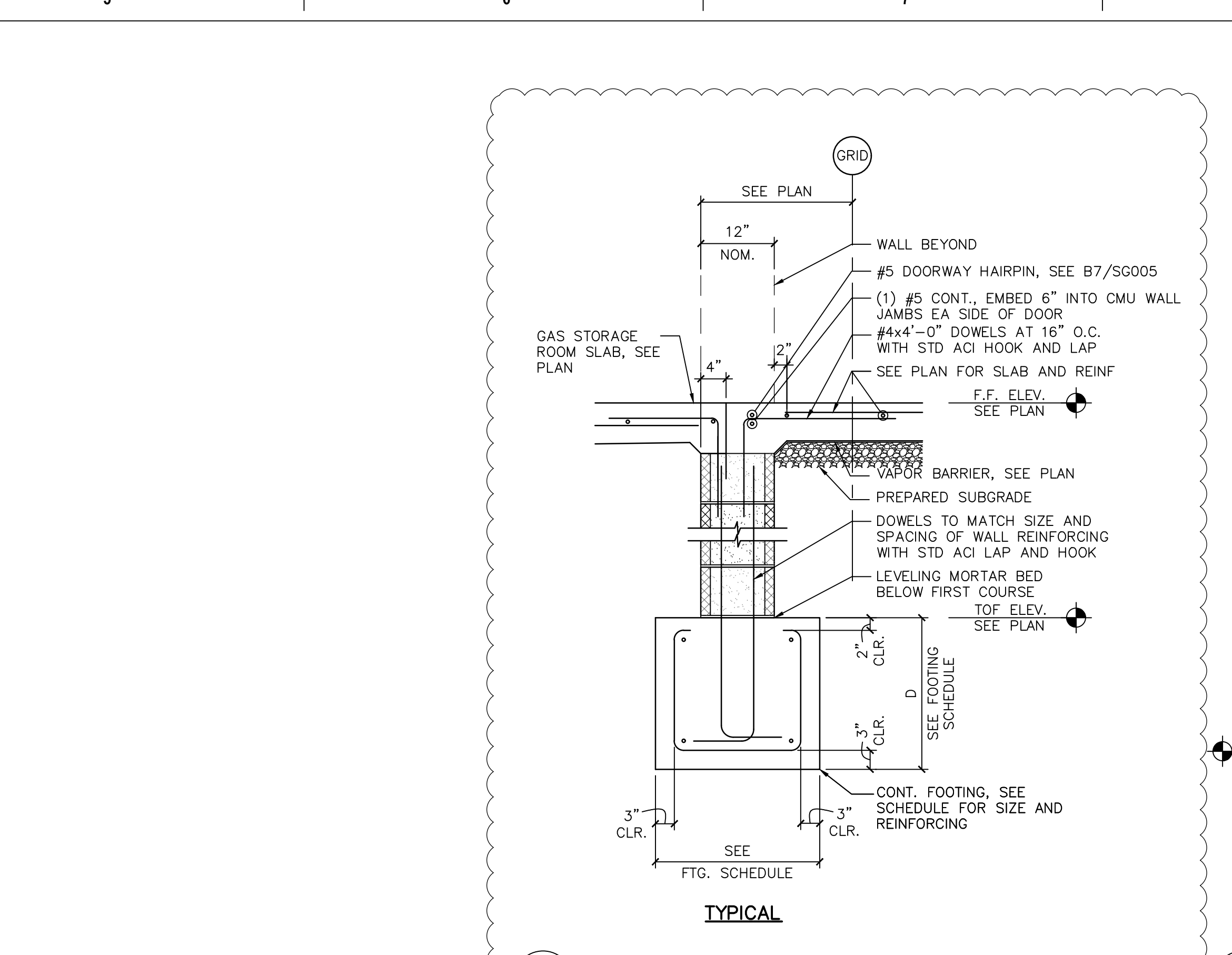
Drawing Number: **SB101**



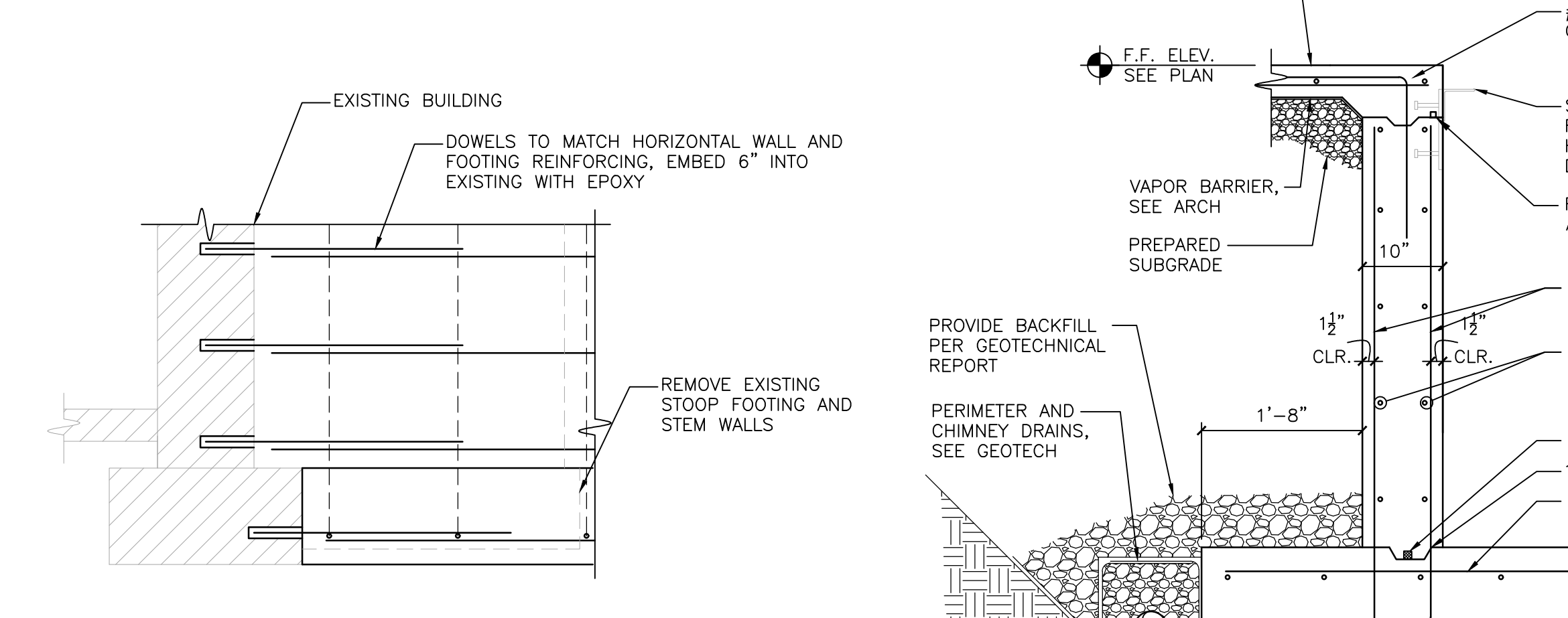
C2 SECTION - OVERHEAD DOOR REINFORCING
1/2'-1'-0"



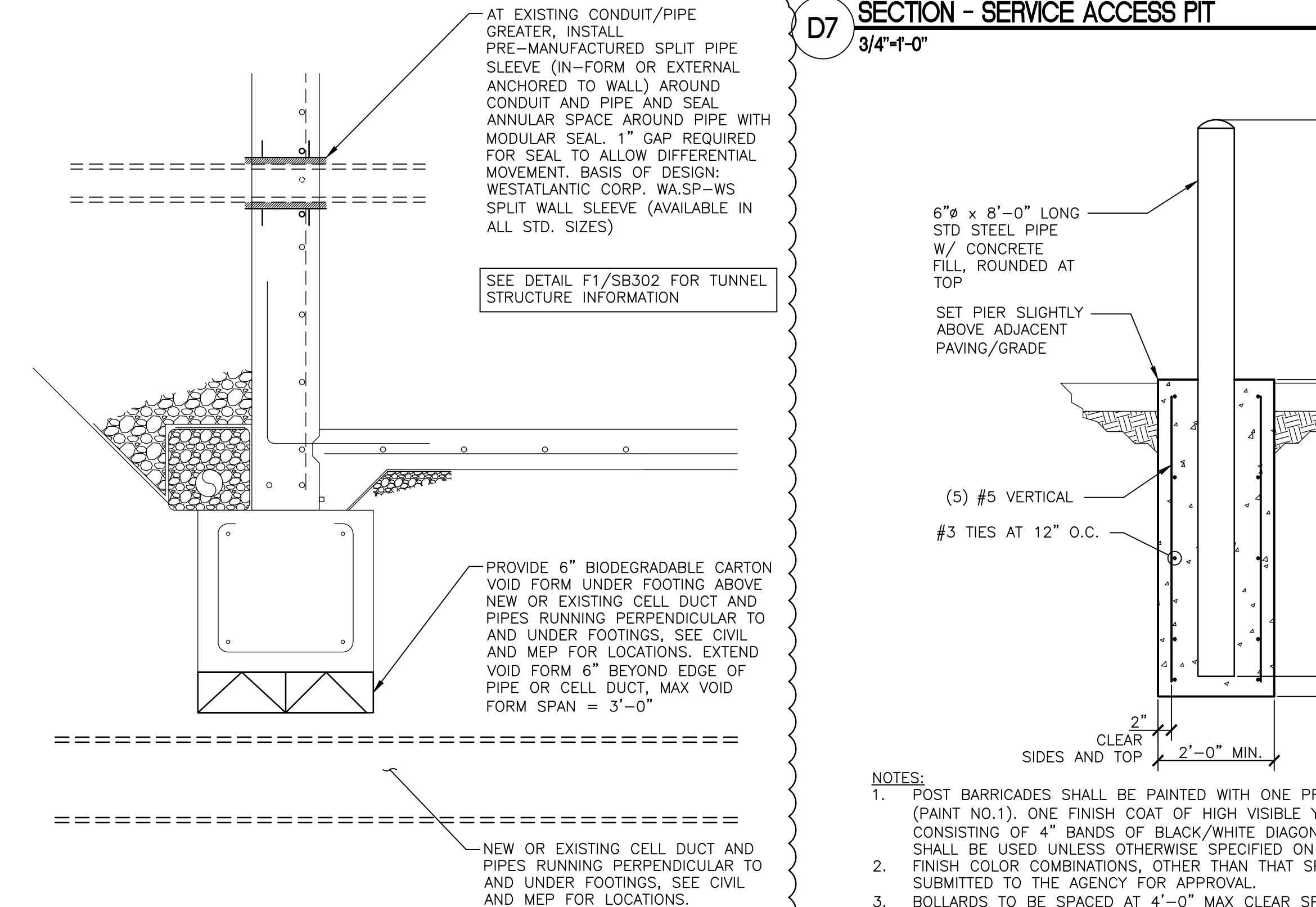
F1 STEAM TUNNEL SECTION
NOT TO SCALE



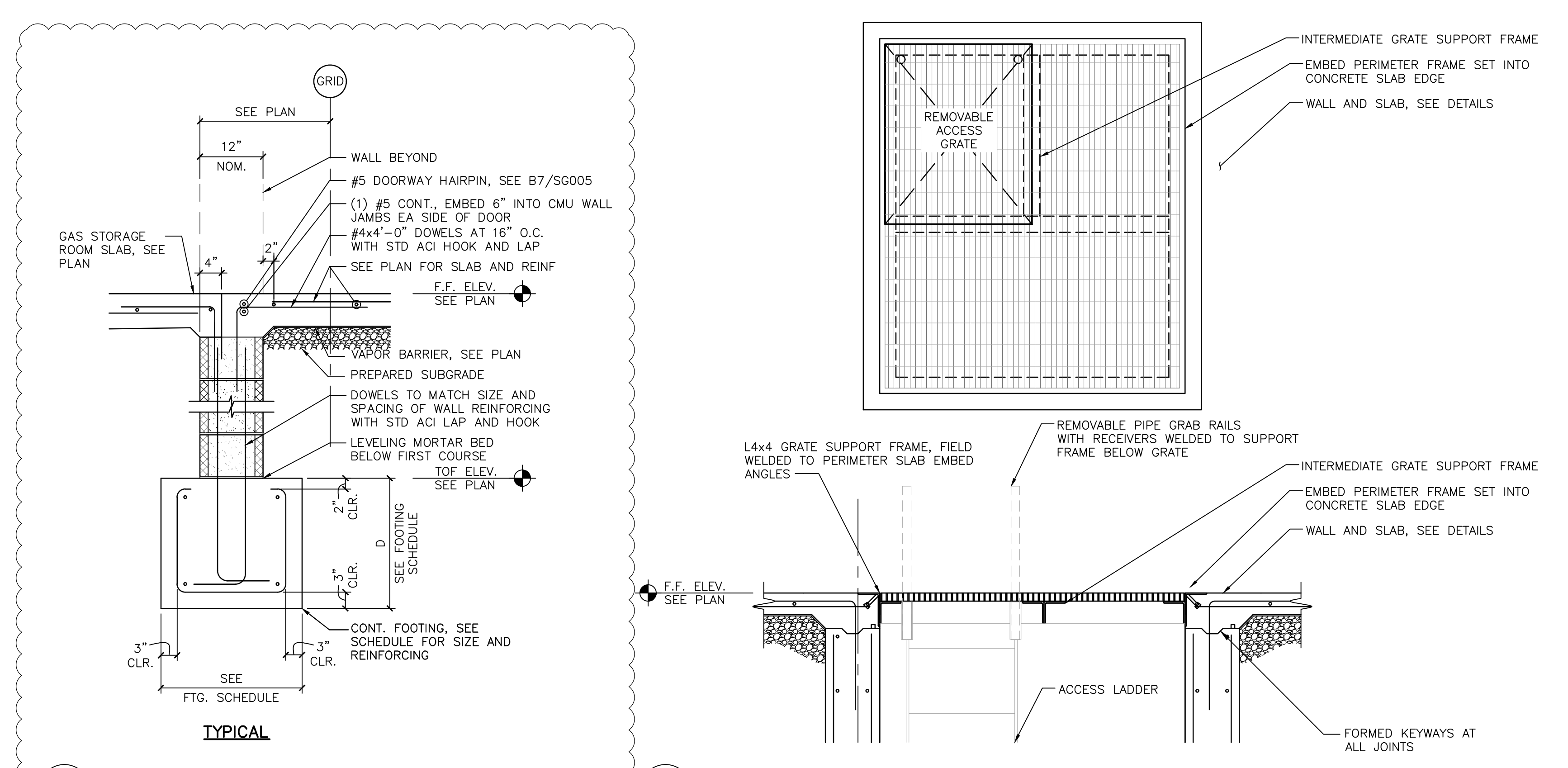
C6 SECTION - FOUNDATION AT GAS STORAGE
3/4'-1'-0"



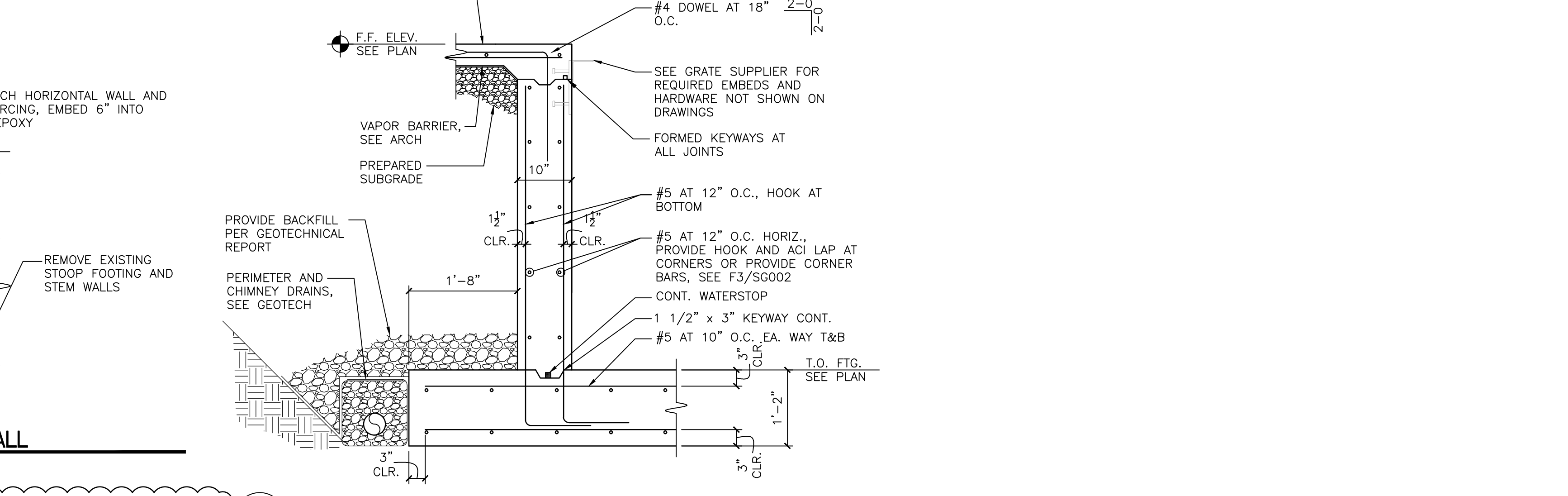
D5 SECTION - FOUNDATION AT EXISTING WALL
3/4'-1'-0"



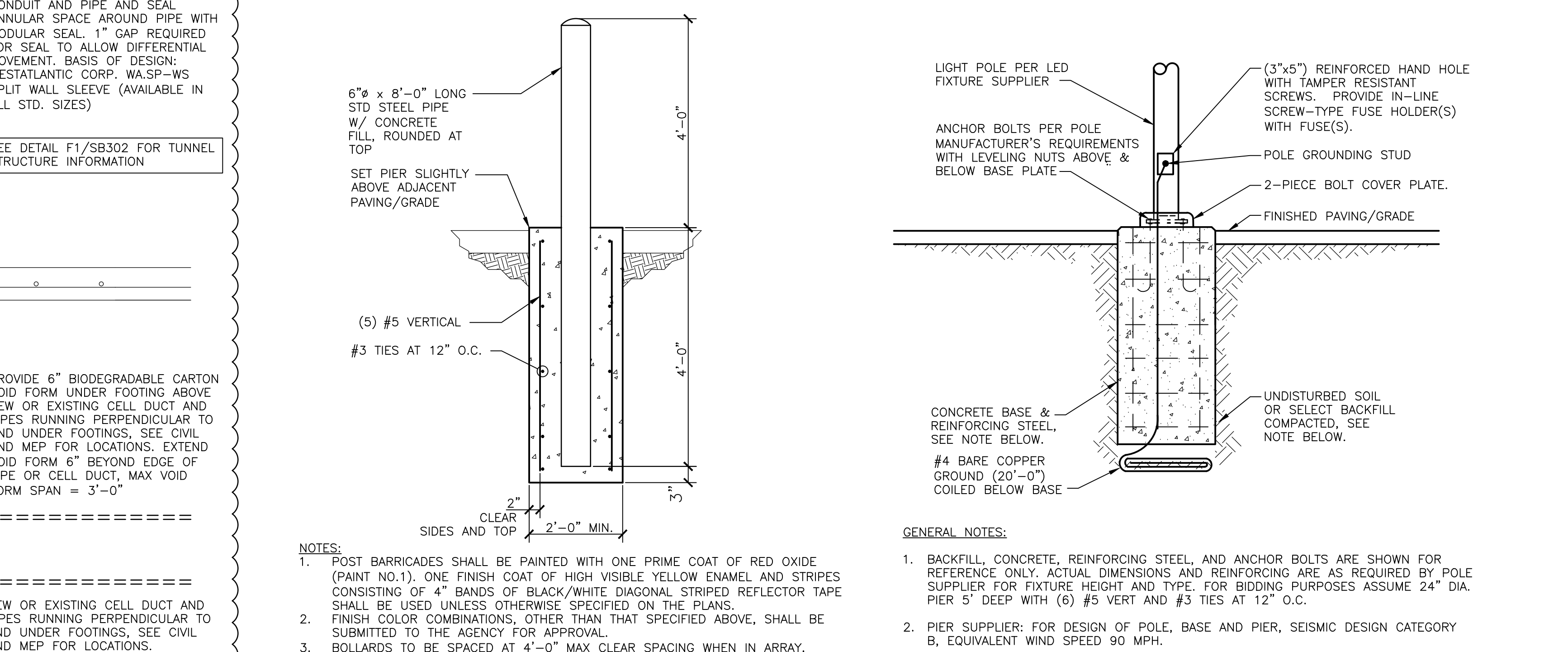
F5 STEAM TUNNEL SECTION - MEP THROUGH/UNDER WALLS
NOT TO SCALE



C8 SECTION - PIT GRATE COVER
3/4'-1'-0"



D7 SECTION - SERVICE ACCESS PIT
3/4'-1'-0"



F7 BOLLARD GUARD POST
NOT TO SCALE
F9 LIGHT POLE BASE
NOT TO SCALE

ADDENDUM 1	08-09-24
ADDENDUM 2 (NO STRUCTURAL CHANGES)	XX-XX-XX
ADDENDUM 3	01-17-25
ADDENDUM 4	02-04-25
Revisions:	Date:

CONSULTANT

MOON TREE CONSULTING
1808 DEEP CREEK RD, OKC, OK 73131
918.527.7166 INFO@MOONTREELLC.COM

ARCHITECT/ENGINEER OF RECORD

paradigm
Architecture | Engineering | Design-Build
200 Envoy Circle, Suite 201, Louisville KY 40299 - www.paradigmusa.com

STAMP

DAVID R1 WALTON
31109
LICENSED PROFESSIONAL ENGINEER

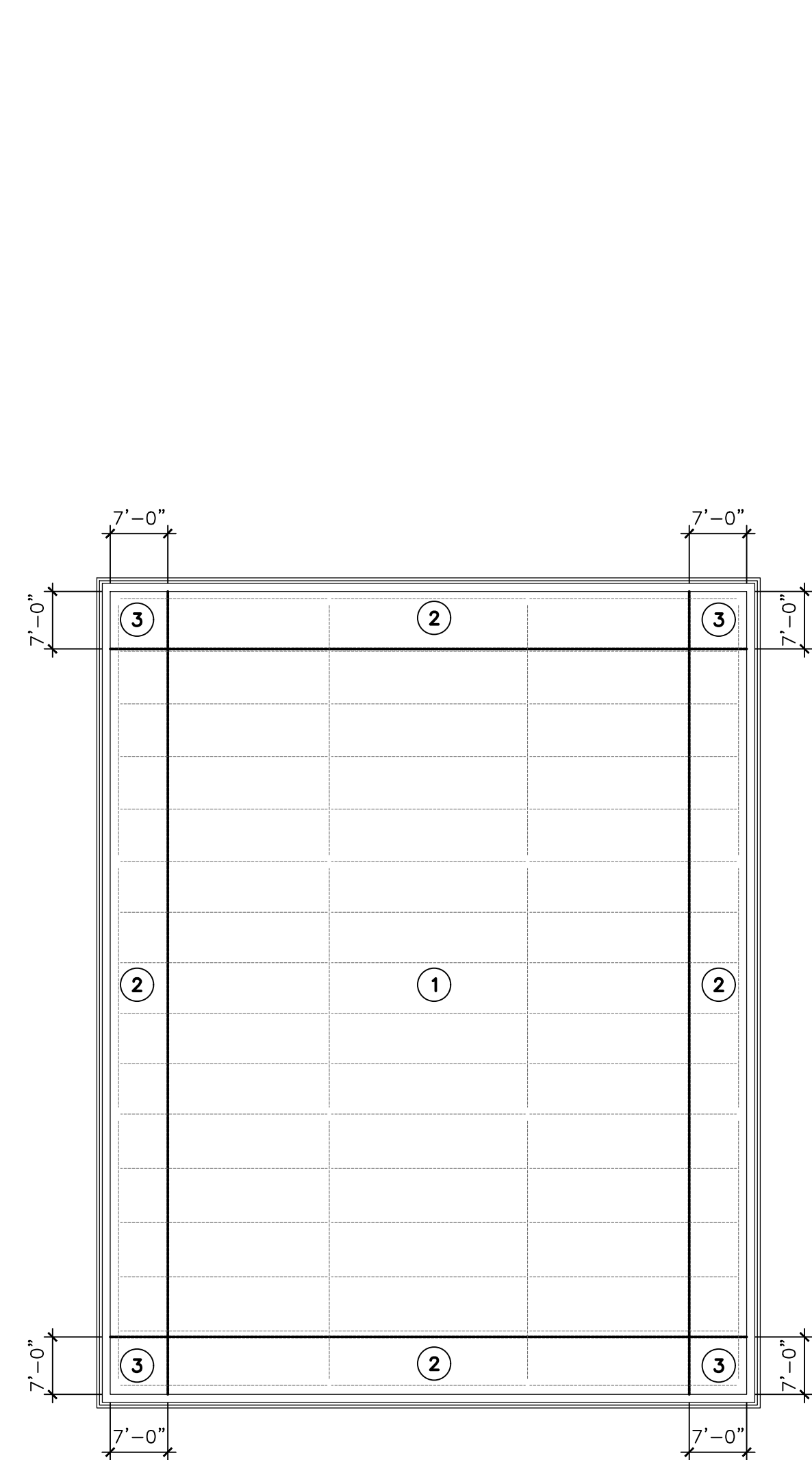
Office of Construction and Facilities Management

VA U.S. Department of Veterans Affairs

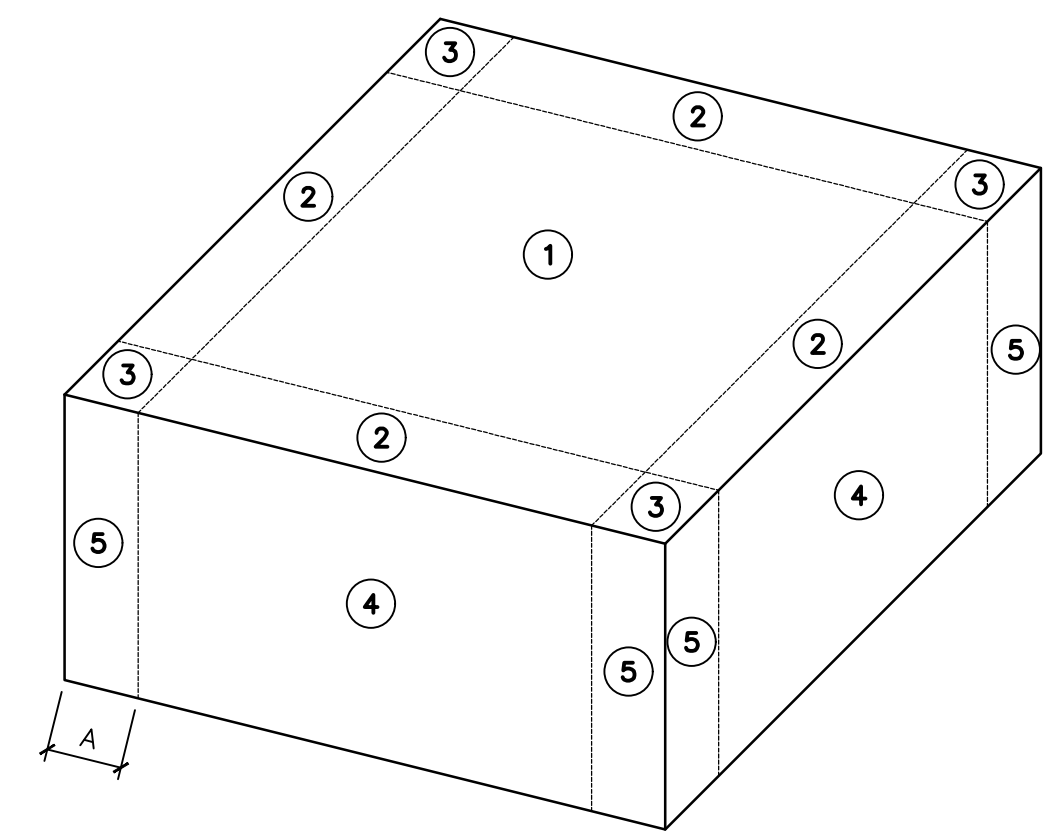
Drawing Title	Phase
FOUNDATION DETAILS	100% CONSTRUCTION DOCUMENTS
Approved: Project Director	FULLY SPRINKLERED

Project Title	Project Number
DESIGN REPLACE BOILER PLANT	438-22-900
Location	Building Number
SIoux FALLS, SD 57005	12
Issue Date	Drawn
08-09-2024	DRW

Location	Issue Date	Checked	Drawn
SIoux FALLS, SD 57005	08-09-2024	TWW	DRW
Issue Date	Checked	Drawn	Drawing Number
08-09-2024	TWW	DRW	SB302



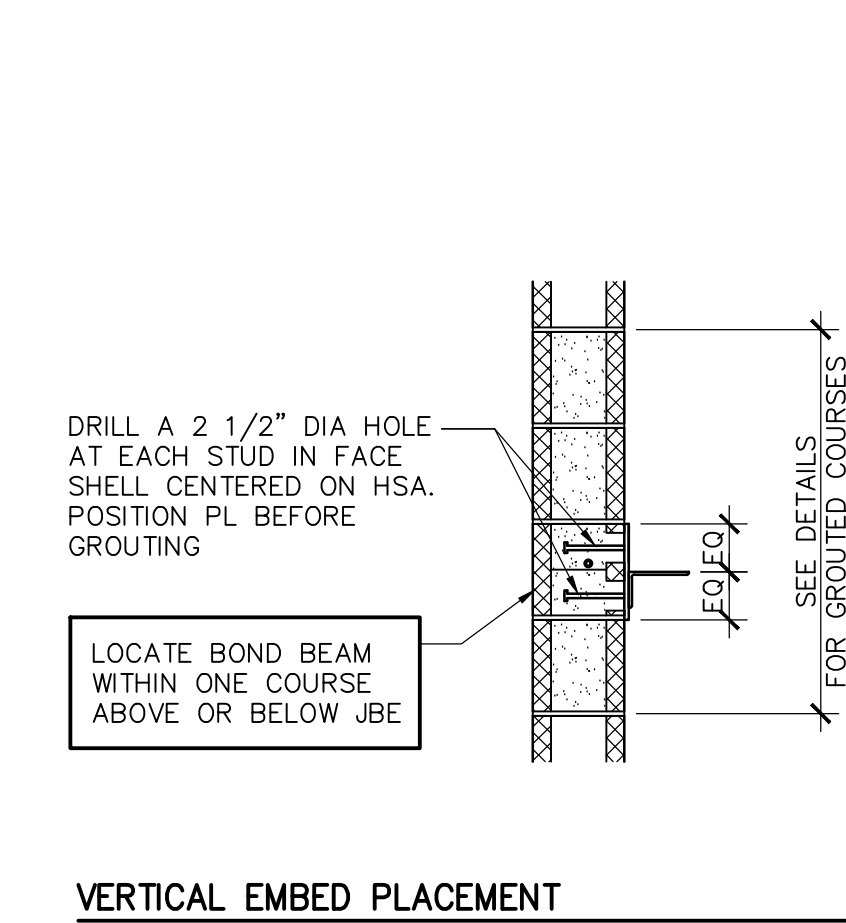
ZONE	EFFECTIVE WIND AREA (SF)	POSITIVE PRESSURE (PSE)	NEGATIVE PRESSURE (PSE)
1	10	+9.6	-23.1
	20	+9.6	-22.5
	50	+9.6	-21.7
2	10	+9.6	-38.8
	20	+9.6	-34.6
	50	+9.6	-29.2
3	10	+9.6	-25.1
	20	+9.6	-38.8
	50	+9.6	-29.2
4	10	+21.2	-22.9
	20	+20.2	-22.0
	50	+19.0	-20.7
5	10	+18.0	-19.8
	20	+20.2	-26.3
	50	+19.0	-23.9
	100	+18.0	-22.0



CMU WALL EMBED AND CONT MEMBER SCHEDULE

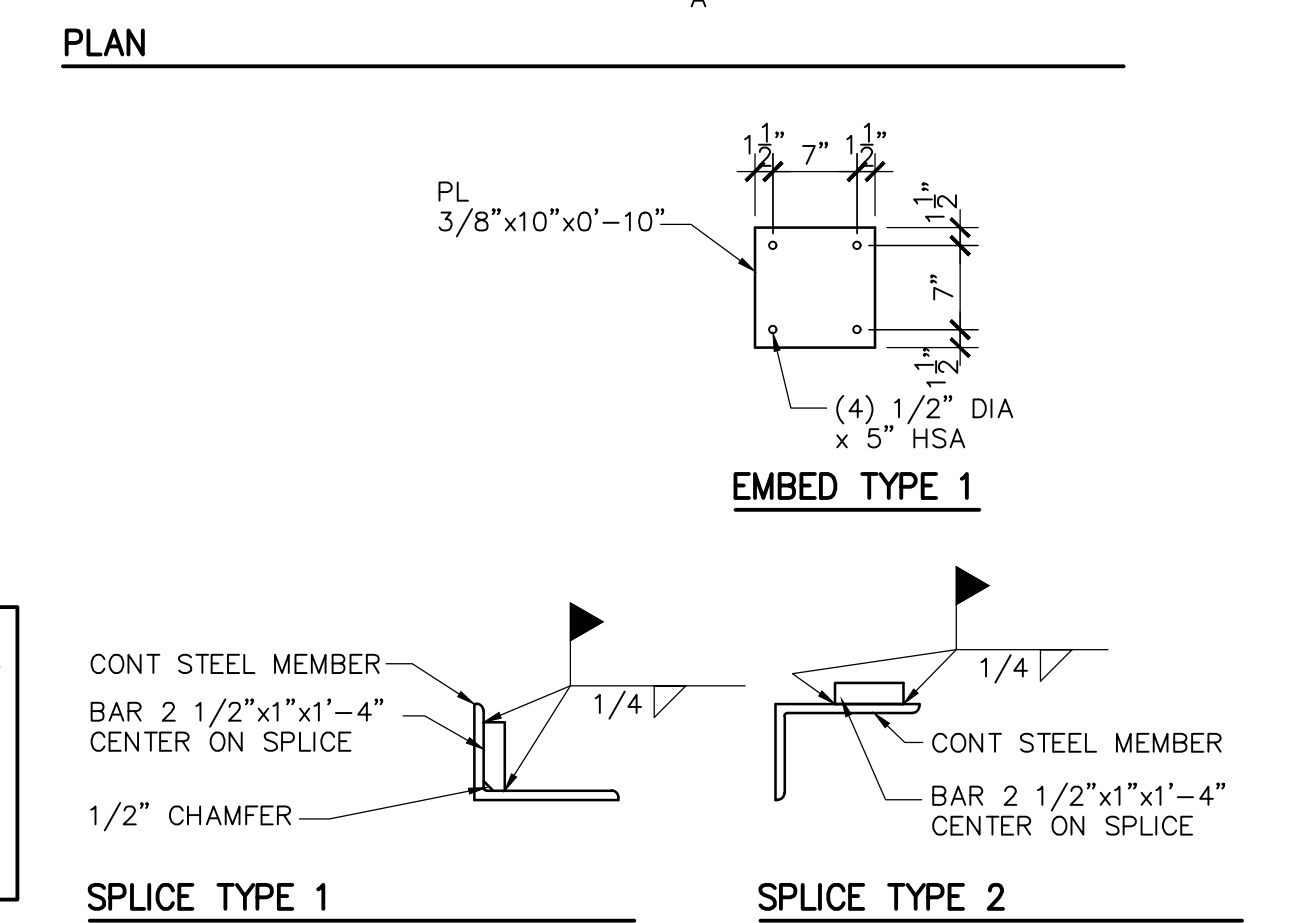
WALL A	LOCATION	EMBED		CONTINUOUS STEEL MEMBER		NOTES
		TYPE	SPACING	SIZE		
		1	48"			1, 2

NOTES:
 1. SEE DETAILS FOR EMBEDS NOT SCHED ABOVE.
 2. WHERE CONT ANGLE IS TURNED UP, USE SPLICE TYPE 1 AND WHERE ANGLE IS TURNED DOWN, USE SPLICE TYPE 2.



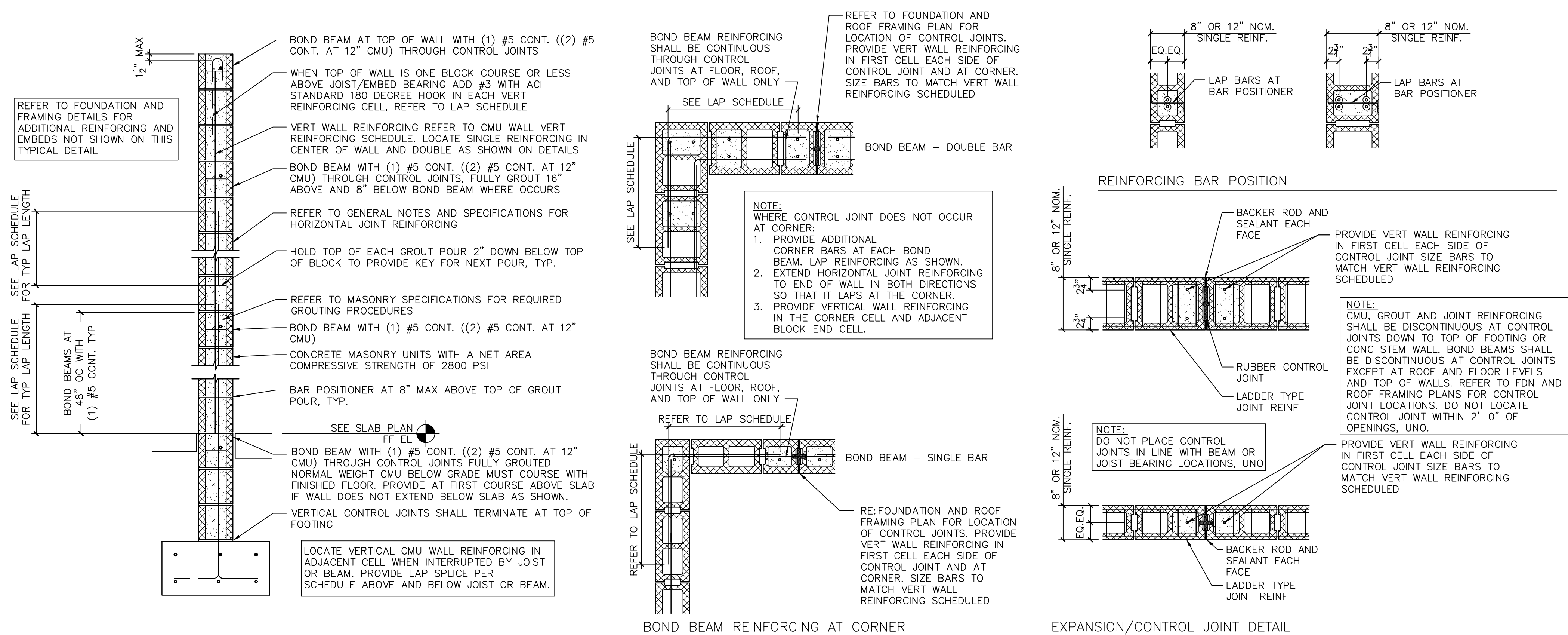
VERTICAL EMBED PLACEMENT

SEE DETAILS FOR CONT STEEL MEMBER, CMU EMBEDS AND ATTACHMENT NOT SHOWN ON THIS SCHEDULE



NOTE(S):
 1. CL OF PLATE VARIES. SEE FRAMING PLAN AND DETAILS.
 2. POSITION PLATE WITHIN GROUTED COURSES AND REINFORCED CELLS.
 3. DO NOT PLACE HSA IN CMU BED OR HEAD JOINTS.
 4. LOCATE EMBED PLATES 12" MIN FROM MASONRY CONTROL JOINTS

D7 TYPICAL CMU WALL REINFORCING DIAGRAM AND DETAILS



F7 TYPICAL CMU WALL REINFORCING DIAGRAM AND DETAILS

F1 COMPONENTS AND CLADDING WIND DIAGRAM

ADDENDUM 1	08-09-24
ADDENDUM 2 (NO STRUCTURAL CHANGES)	XX-XX-XX
ADDENDUM 3	01-17-25
ADDENDUM 4	02-04-25
Revisions:	Date:

CONSULTANT

1808 DEEP CREEK RD, OKC, OK 73131
 918.527.7166 INFO@MOONTREELLC.COM

ARCHITECT/ENGINEER OF RECORD

200 Envoy Circle, Suite 201, Louisville KY 40299 - www.paradigmusa.com

STAMP

Office of Construction and Facilities Management

Drawing Title: GENERAL STRUCTURAL DETAILS

Approved: Project Director

Phase: 100% CONSTRUCTION DOCUMENTS

FULLY SPRINKLERED

Project Title: DESIGN REPLACE BOILER PLANT

Location: SIOUX FALLS VAMC, SIOUX FALLS, SD 57105

Issue Date: 08-09-2024

Checked: TWW, Drawn: DRW

Project Number: 438-22-900

Building Number: 12

Drawing Number: SG003